

Select Multiple Rasters for Separate, Multi-band, or RGB Layers

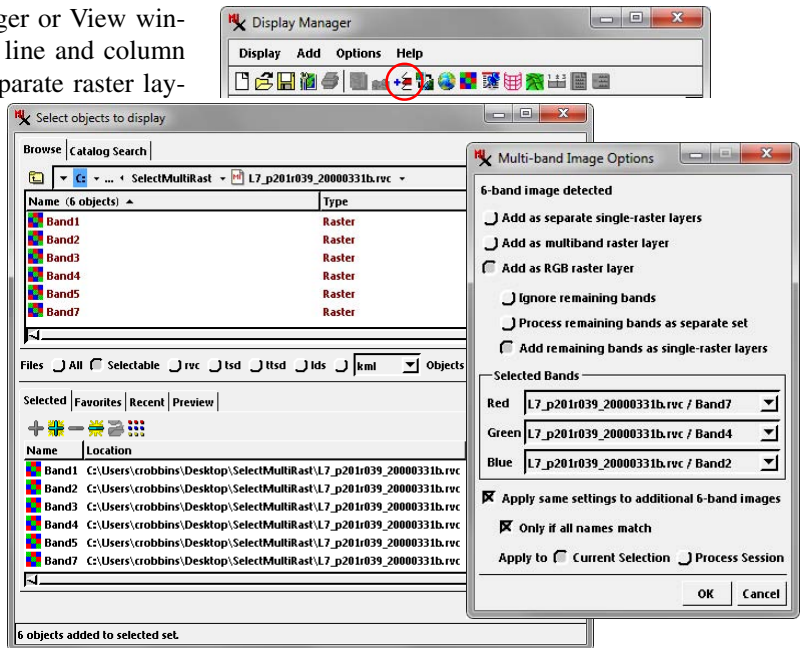
When you use the Add icon button on the Display Manager or View window to select three or more image bands (with matching line and column dimensions), you have the option to add the rasters as separate raster layers, as an RGB layer, or as a multi-band layer (which allows changing the band assignments for the color display: see the Technical Guide entitled *Spatial Display: Multi-band Image Layers*). These choices are presented on the Multi-Band Image Options window, which opens automatically. The layer-type options are presented using a set of radio buttons at the top of the window (see illustration to the right). Sample results of these three options are illustrated at the bottom of the page.

When you choose the RGB or Multi-band options, you can use the Red, Green, and Blue menus in the Selected Bands box to choose the color assignments for the color display. If any of the selected band names include “Red”, “Green”, or “Blue”, they are set as the initial default selection in the menu for their respective color component.

NOTE: You can set a display preference to *Automatically add 3-band raster sets with corresponding names as RGB*. This option can be set on the Raster panel of the Options window that can be opened from the Display Manager (Options / View Options). This setting bypasses the Multi-Band Image Options dialog when you select exactly 3 matching image bands using the Add icon button.

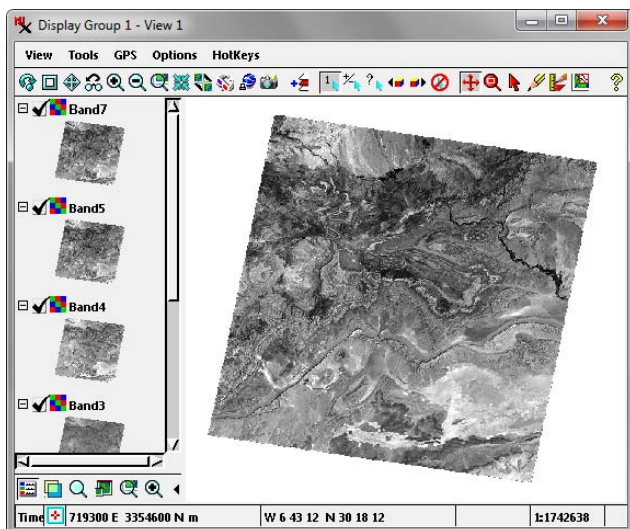
ignore the remaining bands, to add them as separate single-raster layers (in addition to the RGB layer), or process the remaining bands as a separate set. When you choose the latter option and press the OK button, another Multi-band Image Options window opens to allow you to choose color assignments and other options for the remaining bands.

Controls in the bottom portion of the Multi-band Image Options window allow you to apply the same settings to additional images with the same number of bands, to restrict this setting to instances in which all band names match, and to apply these choices to either the current selection or to the current process session.

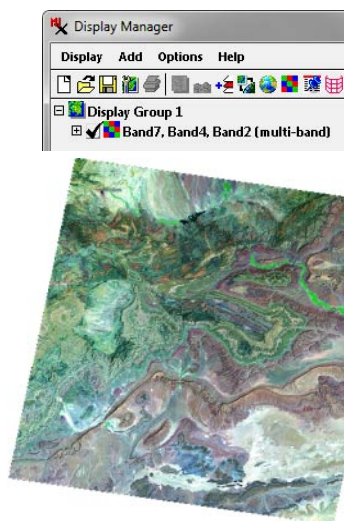


When you use the Add icon button and select three or more matching raster objects, the Multi-band Image Options window appears so you can choose how to add the rasters to the display.

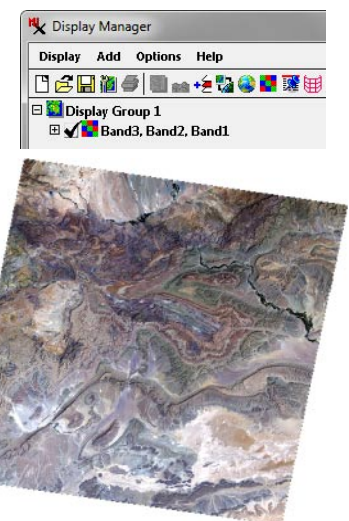
When you have selected more than three bands and choose the RGB layer option, you can choose how to handle the remaining bands that you have not assigned to the color components. You can choose to



Result from Add as separate single-raster layers.



Result from Add as multiband raster layer: changeable color display using any 3 of the selected bands.



Result from Add as RGB raster layer: fixed color display using the specified 3 bands.