
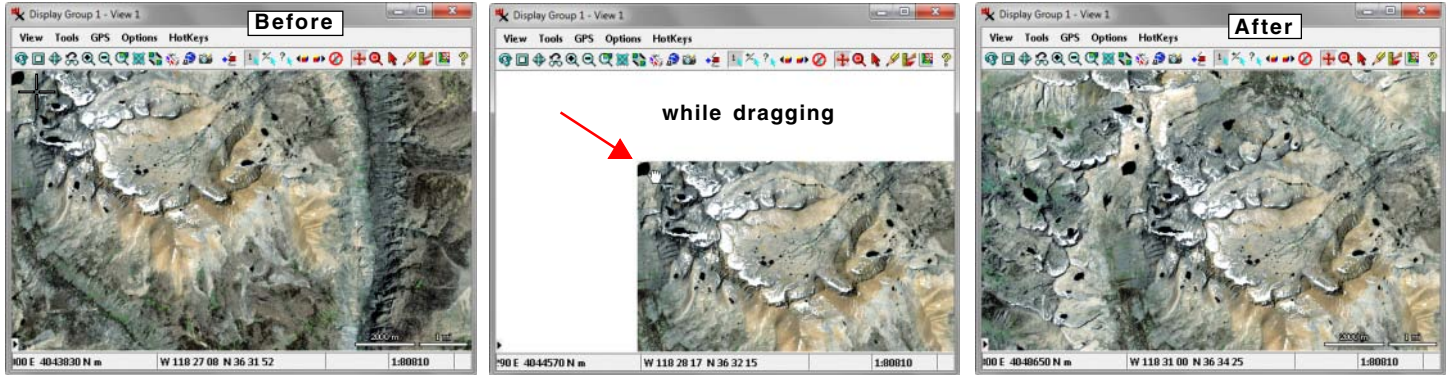


# Pan and Zoom with the View Position Tool

 The View Position tool is the default tool in View windows in the TNTgis products. Using this tool you can left-click and drag to pan the view contents or quickly recenter on any location in the view. While using this tool you can also zoom the view in several ways: using the zoom icon buttons on the View window toolbar, the mouse scroll wheel, or keyboard shortcuts (hotkeys).

## Panning

To pan the contents of the view with the View Position tool, press and hold the left mouse button. The screen cursor changes from a crosshair shape to a hand shape. Drag in the desired direction, then release the mouse button. As you drag, the data layers previously shown remain visible and move relative to the view canvas in the direction you drag, leaving a blank window canvas in their wake. These blank areas are filled in when you release the left mouse button. You can also use the arrow keys on the keyboard to pan the view 90% in the arrow direction, or use the sidebar Locator panel to pan (see the Technical Guide entitled *Locator Manages Zoom and Position*).

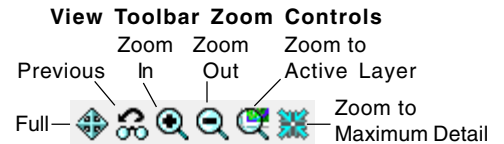


## Recentering






To quickly recenter the view while using the View Position tool, simply place the mouse cursor over the location where you want the view to center and do one of the following: 1) press the middle mouse button (which may be the scroll wheel) or 2) press the space bar on the keyboard.

## Zooming

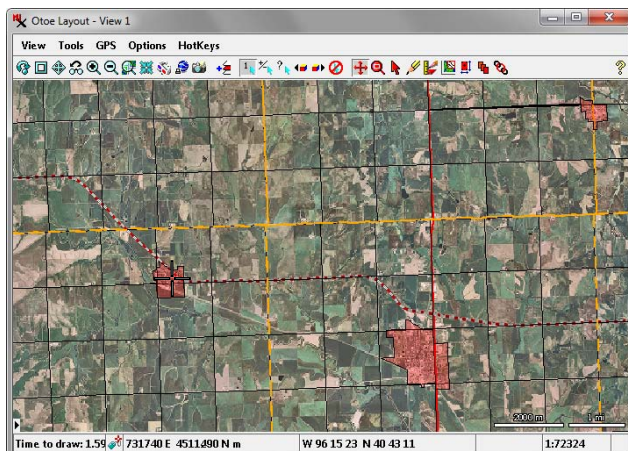
With the View Position tool active there are several ways to zoom the contents of the view. The toolbar on the View window provides icon buttons to zoom in and out, to zoom to the full extents of the data layers, and to return to the previous zoom and position (among others; see illustration to the right). The mouse scroll wheel can also be used to control zooming (see illustration below). Each time you roll the scroll wheel any amount the view zooms in or out by 2X at the cursor position. Roll the top of the wheel forward (away from you) to zoom in and backward (toward you) to zoom out. Keyboard shortcuts (hotkeys) for common zoom actions are also provided (see illustration to the right). You can also use the sidebar Locator and Zoom panels to change the scale of the display in the view (see the TechGuides entitled *Locator Manages Zoom and Position* and *Sidebar Zoom Panel* for more information).



### Keyboard Zoom Shortcuts

	zoom in (at cursor)		zoom to 1X
	zoom out (at cursor)		zoom in 2X
	zoom to full extents		

To see more keyboard shortcuts open the Hotkeys menu in the View window.



### Mouse Scroll Wheel Zoom

Roll scroll wheel forward to zoom in at the cursor location



Roll scroll wheel backward to zoom out at the cursor location

