

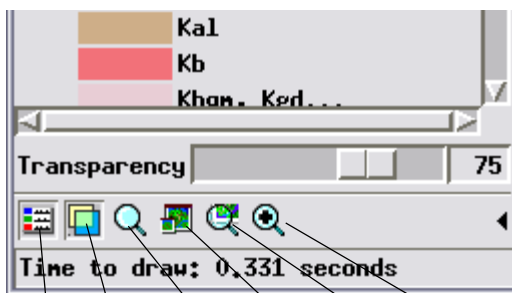
## Sidebar Features

# Easily Vary Transparency for Any Layer

You can apply variable transparency to any layer in a View window in TNTmips, TNTview, or TNTedit using a Transparency slider in the View window's sidebar. You can add this slider to the sidebar using the Layer Transparency icon button at the bottom of the sidebar (see illustration to the right). You can apply variable transparency ranging from 0% (completely opaque) to 100% (completely transparent).

An editable numeric field next to the slider shows the current transparency percentage. The Transparency slider settings apply to the layer that is currently active in the View. You can apply transparency separately to any number of the layers in a View by making each layer active in turn and adjusting the Transparency slider for that layer.

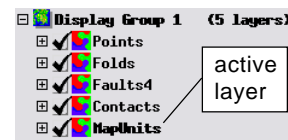
Layer transparency can be set with the sidebar slider for any geospatial layer type: raster layers, web tilesets, and any geometric object layer (vector, CAD, shape, TIN) including linked data in external formats. (Layer transparency cannot be applied to database pinmap point layers.) Transparency is applied to all visible elements in geometric objects (points, lines, labels, and polygon



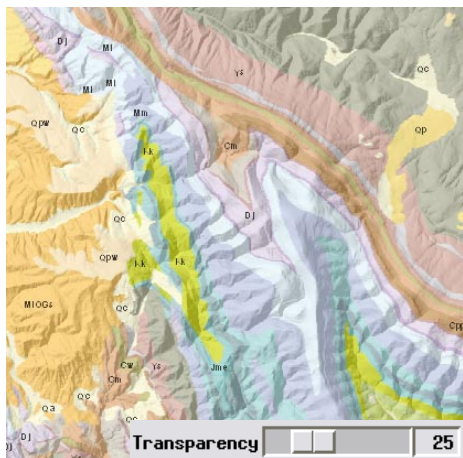
Show Legend Show Magnifier Show Locator Show Places Show Zoom

### Layer Transparency

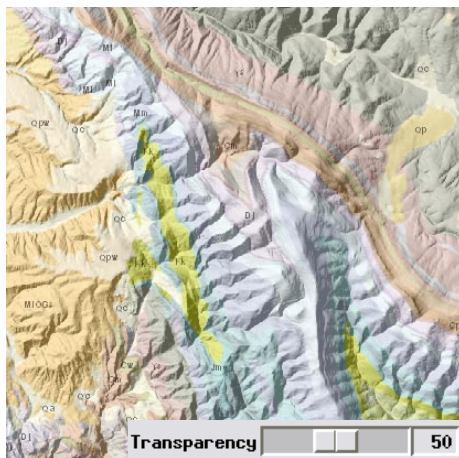
borders and fills). Layer transparency is also applied in addition to any transparency that has already been set for polygon fill styles in geometric objects or for raster layers (in the Raster Layer Controls window). The last-used layer transparency setting is automatically saved for each spatial object along with its other display settings. Some examples of layer transparency are illustrated below.



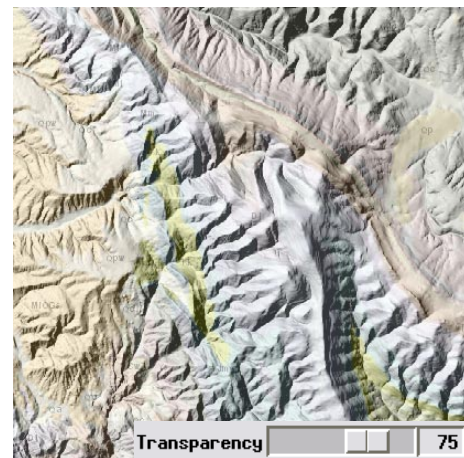
### Map polygons and dynamic labels displayed over shaded relief raster



Vector layer transparency = 25%



Vector layer transparency = 50%

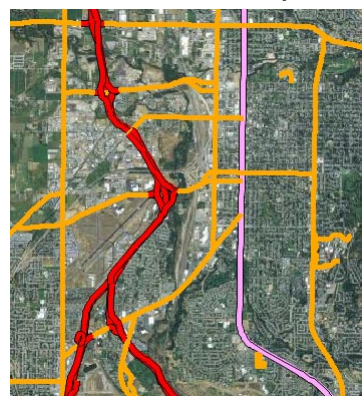


Vector layer transparency = 75%

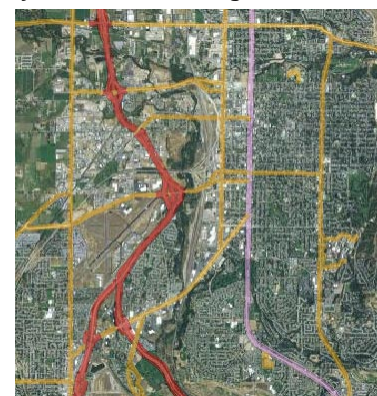
### Orthoimage web tileset displayed with layer transparency = 50% over shaded relief raster



### Road lines in linked shapefile displayed over orthoimage web tileset



Shape layer transparency = 0%



Shape layer transparency = 60%