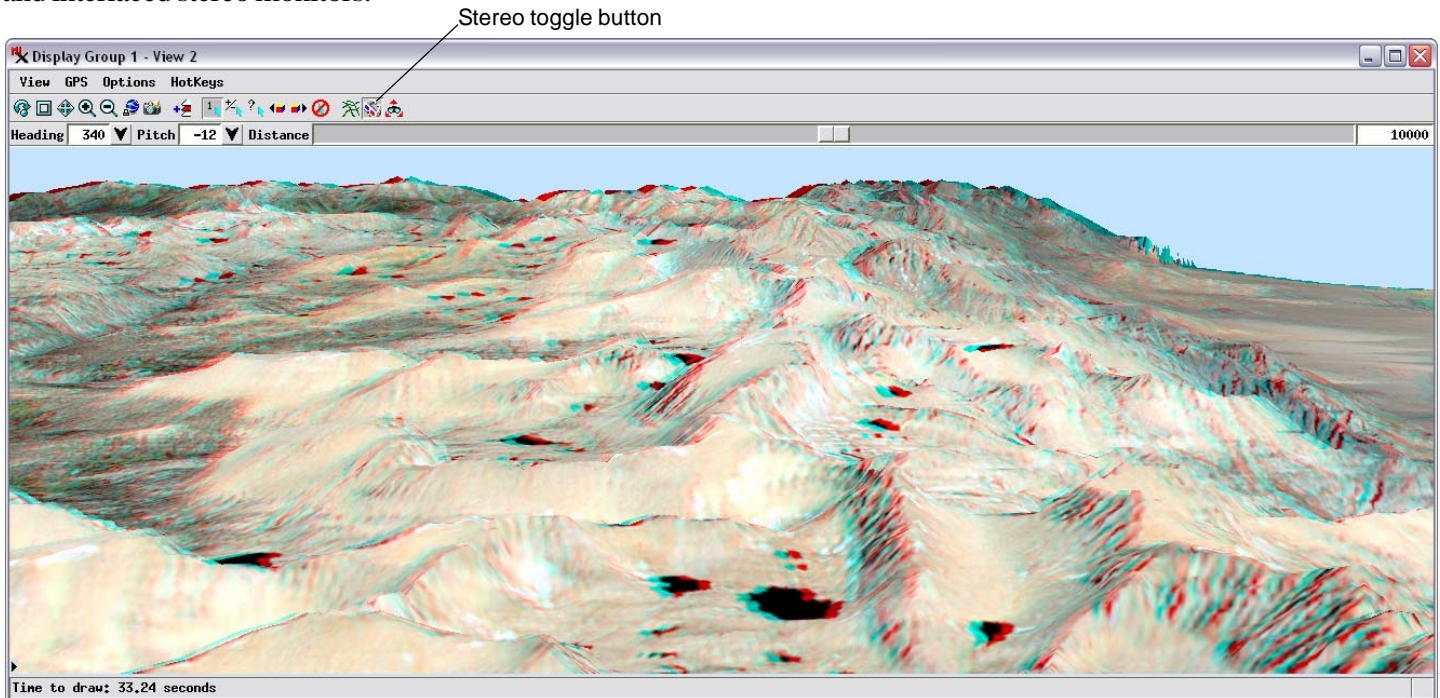


3D Perspective Views in Stereo

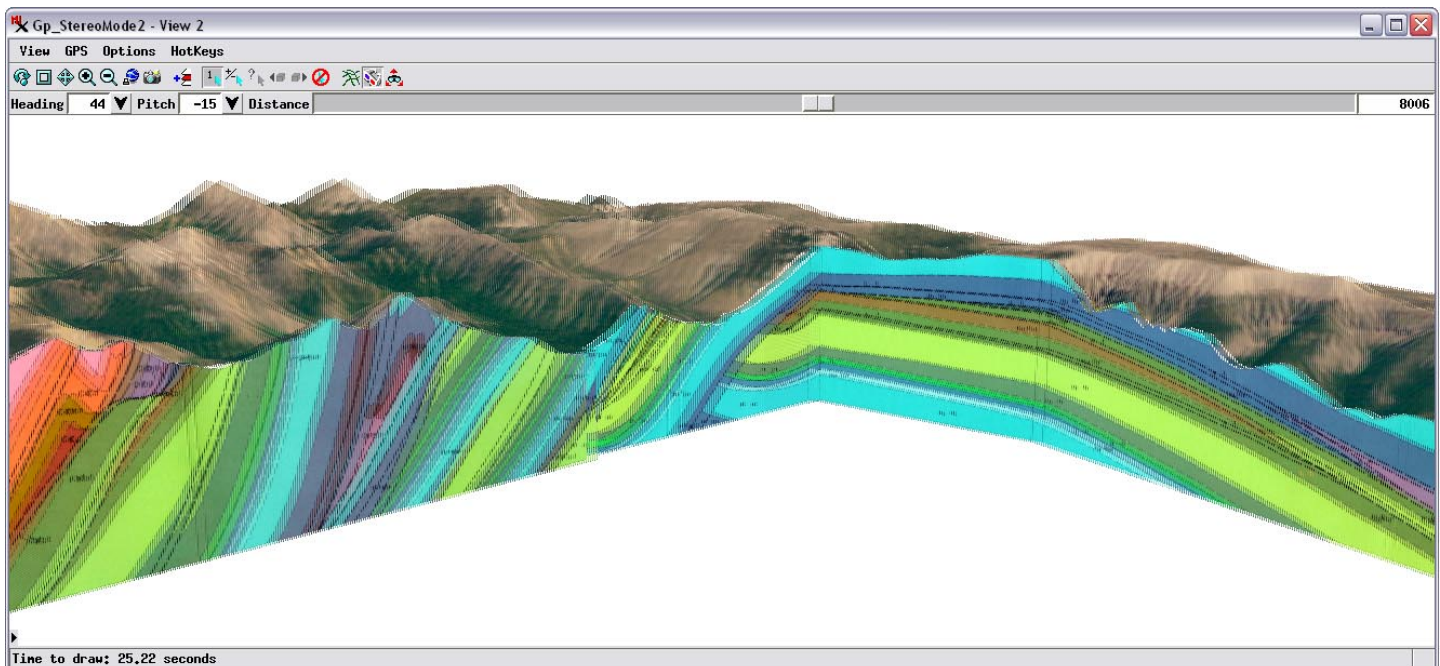
Oblique perspective 3D views in TNTmips can also be rendered in stereo to enhance the 3D effect. Several stereo viewing modes are available for use with different stereo viewing devices. You can choose Anaglyph mode for use with inexpensive color filter glasses or Interlaced Lines or Interlaced Columns for use with liquid crystal shutter glasses and interlaced stereo monitors.



Choose Options / Stereo Settings from the 3D View to open the Stereo Device Settings window and choose the appropriate stereo mode.



Anaglyph stereo display of a color image in 3D perspective View for use with inexpensive color filter (red-cyan) stereo glasses.



Column-interlaced stereo view that includes several manifolds showing geologic cross-sections. A line-interlaced mode is also available. The interlaced modes are used with liquid crystal shutter glasses and interlaced stereo monitors.