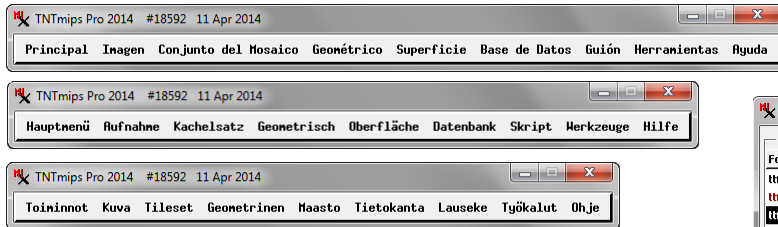


Use TNTgis Software in Your Language

The TNTgis family of software products include built-in language support for two dozen languages:

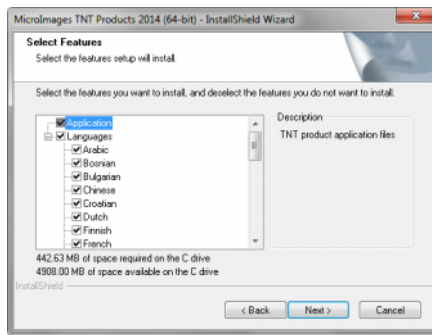
Bengali	Finnish	Japanese	Russian
Bosnian	French	Malaysian	Serbian
Bulgarian	German	Norwegian	Slovakian
Chinese	Greek	Polish	Spanish
Croatian	Indonesian	Portugese	Thai
Dutch	Italian	Romanian	Turkish



You can use TNTmips, TNTedit, TNTview, and TNTatlas with interface window text translated into any of these languages. In order to change the TNT Products interface to your language, follow the steps outlined below.

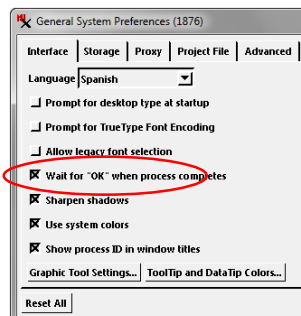
Choose the Languages to Install with TNTgis

Language packages are included in the TNT Products downloads for TNTmips (Pro, Basic, and Free), TNTedit, TNTview, and TNTatlas. When you first install a version of TNTgis software, you can choose which language packages to install (all are selected by default). When you install weekly updates, any installed language packages are automatically updated when changes are available.



Choose the TNTgis Interface Language

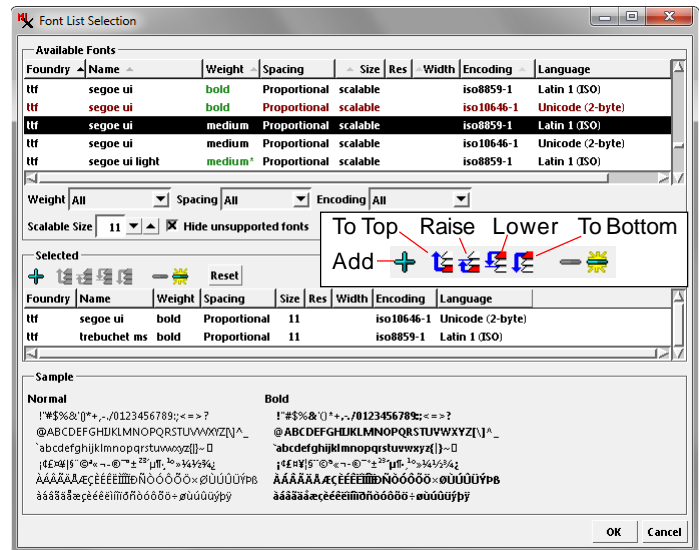
In your TNTgis product, open the General System Preferences window (in TNTmips, choose Tools / System / Preferences; in TNTedit, TNTview, and TNTatlas, choose Options / General Options). Use the Language menu on the Interface tabbed panel of the General System Preferences window to choose the interface language. This change takes place the next time you start the TNTgis product.



Select the TNTgis Interface Font

In your TNTgis software, open the Font List Selection window to choose the font to use in the interface windows (in TNTmips, choose Tools / System / Fonts; in TNTedit, TNTview, and TNTatlas, choose Options / Setup Fonts). The TNT products support any Unicode TrueType font. Make sure that you have a TrueType font that supports the character set used for your language.

In the Font List Selection window (illustrated below), select a desired font in the Available Fonts list at the top of the window and press the Add icon button to add it



to the Selected list. You can add more than one font to the selected list and easily switch between them. Fonts are used in the order in which they appear in the list. If a character being rendered is not in the first font, the next font in the list will be used for that character. Use the icon buttons in the Selected pane to change the list order when needed.

Text Entry in Your Language

All of the TNTgis software can use text in any language and TrueType font for map annotations, legends, labels, and database attributes. To enter text in your language you must configure your computer's interface to use your language and any required keyboard layout. To do so, follow the steps outlined below.

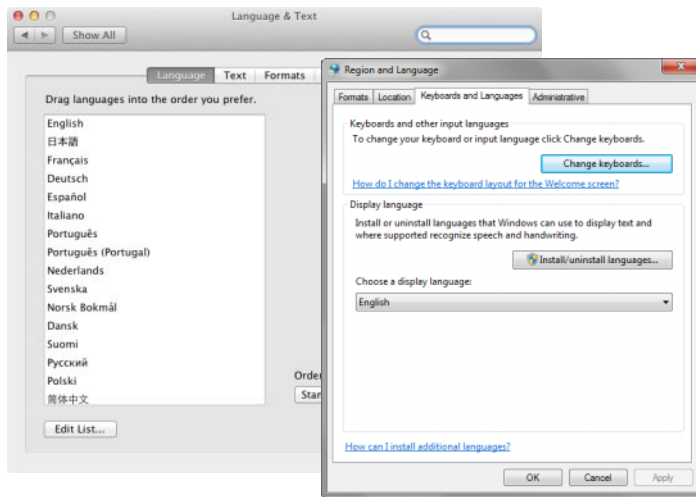
Windows: Install Language Pack and Font

If you have not done so already, your first step for Windows computers is to download and install the language package for your language from Microsoft. This is important if text entry in your language requires a specific keyboard layout. (Mac OS X has built-in support for many languages and their keyboard layouts.) Also make sure that you have a TrueType font that supports the character set used for your language.

(continued)

Change Your OS Display Language

Set your language as the display language for your operating system and select any required keyboard layout option. In Windows, change the display language in the Region and Lan-



guage window (in PC Settings in Windows 8 or the Control Panel in earlier Windows versions). In Mac OS X, use the Language and Text window (in System Preferences) to change the order of preference in the language list.

Japanese Text Input on Mac OS X

Input of text in Japanese on Mac OS X requires installing the Mac UIM package, a text input method library that is available at <https://github.com/e-kato/macuum/>.

Activate Japanese input by pressing Shift-Space in any text entry in TNTmips (this requires setting the TNTmips interface language to Japanese). As you type, you will see a new text input area in the bottom left of the window that receives the Japanese input. Pressing the Space or up/down arrow keys allows you to scroll through the possible Kanji selections matched to your input. When you are done, press Enter to insert the Japanese text. Pressing Shift-Space again will deactivate the input method.

