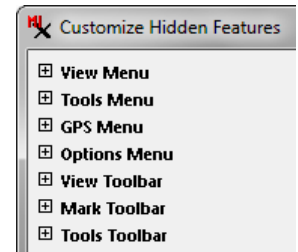


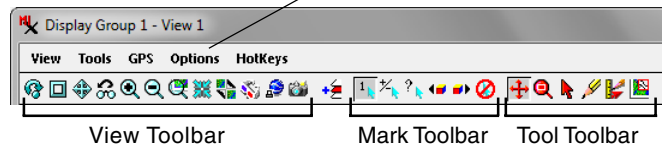
Customize the View Window

The View window in TNTmips provides menus and toolbars with icon buttons to let you perform actions in the View (e.g., zoom, pan, or mark elements) and to activate graphic tools (e.g., the Zoom tool). You can choose which selections appear in the View, Tools, and Options menus and which icon buttons appear in the View, Mark, and Tool toolbars. You make these choices using the Customize Hidden Features window, which you can open from the View window's Options menu.

The menu selections and toolbar icons are presented in the Customize Hidden Features window in a tree-control list. The contents of each menu and toolbar are presented in a separate group that you can expand or collapse by pressing the small icon button to the left of the group name. When a group is expanded, its menu options or icon button selections can be turned on or off using the checkbox provided. Items with a dimmed checkbox cannot be turned off.



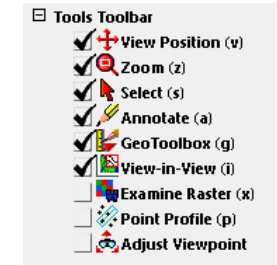
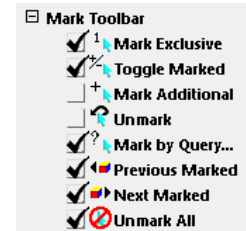
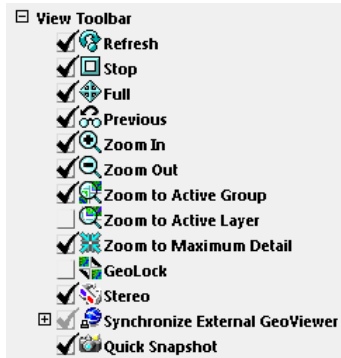
Choose Options / Customize to open the Customize Hidden Features window.



Add Icons to the Toolbars

The View, Mark, and Tools toolbars in the default installation of TNTmips provide a selection of the most frequently-used actions and tools. The illustration to the right shows the toolbar groups in the Customize Hidden Features window with the default icon button selections for a non-layout View. (Additional tools are available for layout Views.) You can add any of the excluded icons to their respective toolbar by turning on the checkbox next to the icon.

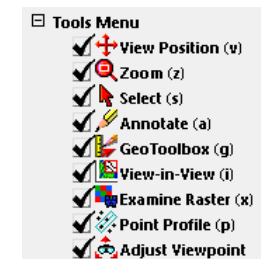
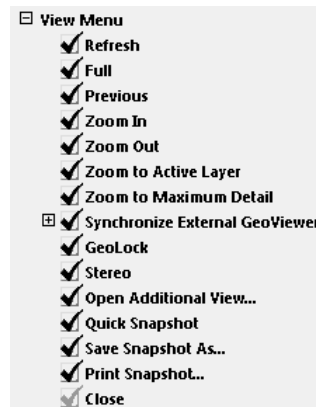
The function of each of these icon buttons is described in the Technical Guide entitled *Spatial Display: View Iconbar Features*.



Any tool can be activated using either an icon button or from its entry on the Tools menu. Most of View toolbar functions also have equivalent entries on the View menu. Thus you can access all tools and most View functions from the menus when their icon buttons are hidden, so adding these icons to the toolbars is a matter of personal preference and convenience.

Simplify the View Interface

You can also turn off the entries for icon buttons or menu entries. For example, you may wish to simplify the View window interface for novice users or simply remove icon buttons or menu entries that you never use.



Scope of View Window Customization

All View window customization settings are stored in the customui.user file in the same location as your other user settings files. Customization options set while viewing a hardcopy or display layout are applied to all subsequent layouts. Customization options set in a non-layout view are applied to all subsequent non-layout views. These customization settings can be transferred to subsequent installations of the TNT products if you choose the transfer settings option during installation, or copied to another TNTmips installation by copying the customui.user file. When you assemble an electronic atlas for distribution on CD or DVD, the Atlas Assembly Wizard provides the option of transferring the current customization options to the atlas. Thus you can use your TNT customization settings to provide a simplified View interface when the atlas is viewed in TNTatlas.

