

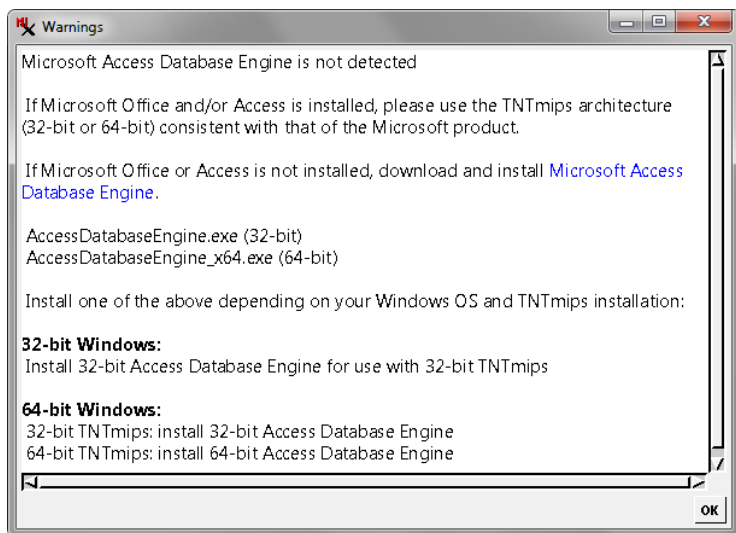
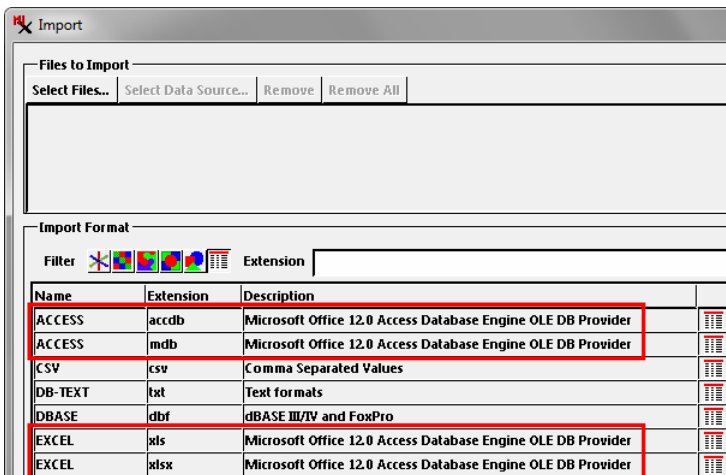
Import or Link to Access and Excel Files (.accdb, .mdb, .xlsx, .xls)

The Import process in TNTmips allows you to import or link to database tables in Microsoft Access files (.accdb, .mdb) or to Excel spreadsheets (.xlsx, .xls). These operations require a Windows OS and installation of the Microsoft Access Database Engine, which includes the Microsoft ACE OLEDB provider. The Access Database Engine is installed along with Microsoft Office (2007 or later) and Microsoft Access. If you do not have one of these applications installed, you can download and install the free Microsoft Access Database Engine 2010 Redistributable to enable use of Access and Excel files with TNTmips.

On 64-bit Windows systems (8, 7, and Vista), MS Office/Access 2010 and 2013 can be installed in either 32-bit or 64-bit versions (but not both). In order to work with Access and Excel files in TNTmips on such installations, you must run the TNTmips version with the same processor architecture as the installed Microsoft Office; see the table below entitled Microsoft Office Installed. (NOTE: you can install and run both 32-bit and 64-bit versions of TNTmips on the same 64-bit Windows computer).

If a suitable database engine is not available when you try to import or link to an Access or Excel file in TNTmips, a warning window is shown advising that the Microsoft Access Database Engine is not detected (see illustration below). Clicking on the Microsoft Access Database Engine link in this window takes you to a page on the MicroImages website with a link to the Microsoft page where you can download the database engine.

The Microsoft Access Database Engine 2010 Redistributable also can be installed in either 32-bit or 64-bit versions on 64-bit Windows systems. Separate download files are provided by Microsoft for these installations. You should download the file for the same processor architecture as the TNTmips you plan to run (see table below right entitled No Microsoft Office).



If a suitable database engine is not available when you try to import or link to an Access or Excel file, the Warning window shown above appears. Clicking on the Microsoft Database Engine link in the window takes you to a page on the MicroImages website with a link to the Microsoft page where you can download the Microsoft Access Database Engine.

NOTE: Users running Windows XP with the deprecated Microsoft Jet 4.0 Database Engine can import or link to Access MDB or Excel XLS files but cannot use the newer ACCDB and XLSX formats used in these applications.

Microsoft Office Installed

To use Access and Excel files in TNTmips, install and run the indicated version depending on whether you are using 32-bit or 64-bit versions of Windows and Office.

	MS Office 64-bit (2010, 2013)	MS Office 32-bit (2007, 2010, 2013)
64-bit Windows (8, 7, Vista)	64-bit TNTmips	32-bit TNTmips
32-bit Windows (Vista, XP)	X	32-bit TNTmips

No Microsoft Office

Download and install the indicated file for the Microsoft Access Database Engine 2010 Redistributable.

	64-bit TNTmips	32-bit TNTmips
64-bit Windows (8, 7, Vista)	AccessDatabaseEngine_x64.exe	AccessDatabaseEngine.exe
32-bit Windows (Vista, XP)	X	AccessDatabaseEngine.exe