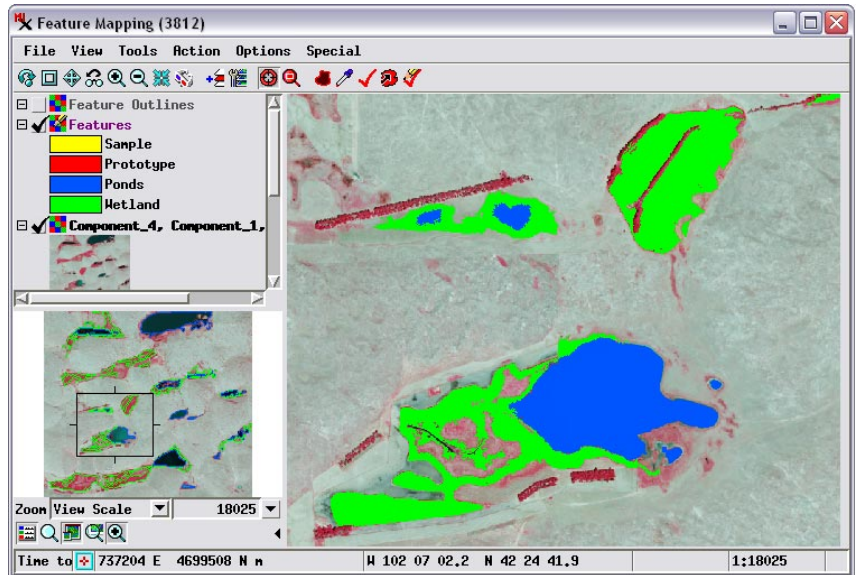


View Features as Outlines

The image areas that you classify interactively in the Feature Mapping process in TNTmips are recorded as areas of solid color in a Features raster. This raster layer overlays the image you are using as a visual reference in the Feature Mapping main view, so the image areas you have already classified are obscured beneath the feature class colors. As a solution to this issue, Feature Mapping also provides a *Feature Outlines* raster layer.

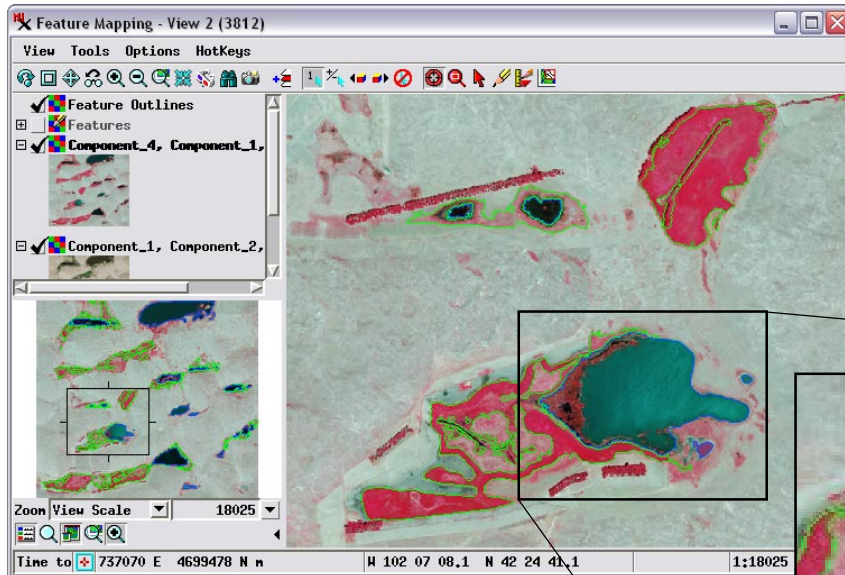
Feature Outlines is a raster that provides a one-cell wide outline of each feature class area, allowing the reference image to be visible in the interior portions of each feature area. This temporary raster is automatically created and updated from the Features raster as you work. The Feature Outlines layer is automatically shown instead of the Features layer in the Locator view in the sidebar but is hidden by default in the main view. You can use the Show / Hide checkboxes in the sidebar to turn on the Feature Outlines and turn off the Features layer in the main view to enhance visibility of the reference image while still keeping track of the areas already mapped. However, a more effective option is to open an additional view window (View / Open Additional View). Additional Feature Mapping views include all of the layers shown in the main view, but the Feature



Feature Mapping window showing pond (blue) and wetland (green) feature classes mapped in a small area of the Sandhills region of Nebraska, USA, using a 4-band orthoimage. A color-infrared reference image using three of the image bands is shown. The Features raster with its opaque colors is shown in the main view by default but is hidden in the Locator. Conversely the temporary Feature Outlines raster is shown by default in the Locator but hidden in the main view.

Outlines raster layer is turned on by default instead of the Features raster. Thus you can continue to work with the Features raster shown in the main view while referring as needed to the secondary view showing the reference image overlaid by the Feature Outlines.

At any time you can also save the feature class areas as a vector object that can be displayed in any TNT view and/or as a KML file for viewing the features in 3D in Google Earth (see the Technical Guide entitled *Feature Mapping: Save Features as Vector and KML*).



An additional Feature Mapping View window (above) includes all of the layers shown in the main window but with default visibility of the Features and Feature Outlines rasters reversed: the Feature Outlines layer is shown and the Features layer is hidden by default in the additional view. A portion of this view is shown magnified to the right to more clearly show the 1-cell wide outlines of each feature area. The additional Feature Mapping view thus allows you to continuously see the image areas that you have already mapped as features for reference as you continue mapping features.

