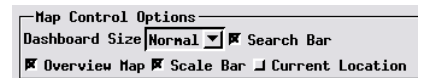
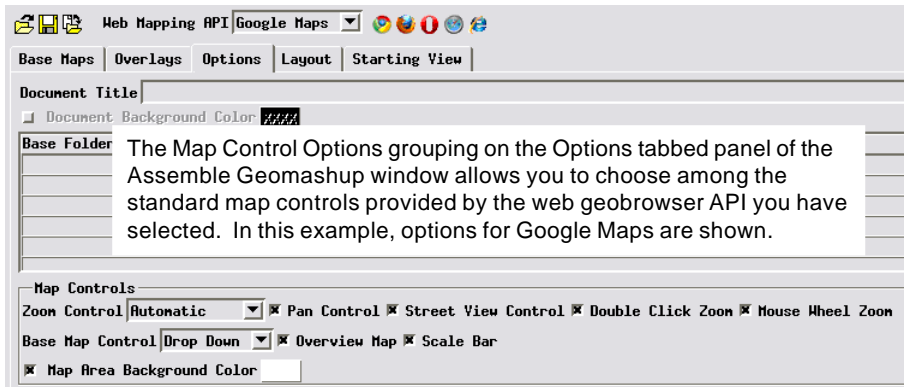


# Geomashup Map Control Options

Geomashups can optionally include a variety of controls to allow the viewer to select which data layers and area to view along with other components providing view enhancements such as an overview map and scale bar. MicroImages uses the term *standard map controls* to refer to controls and features that are provided and supported directly by the web mapping API you have selected (i.e., the geobrowser in which the geomashup will be viewed). Standard map controls include base map selection and zooming / panning, as well as various view enhancements. A selection of different control styles are available for these functions, depending on which web mapping API you have selected as your target geobrowser (Google Maps, Google Earth, Bing Maps, or Open Layers). You can also add different types of custom controls (supported by JavaScript libraries provided by MicroImages) to your geomashups, as described in the Technical Guide entitled *Geomedia Publishing: Geomashup Custom Overlay Controls*. You can easily evaluate your map control choices while building the geomashup by using the preview icon buttons on the Assemble Geomashup window.

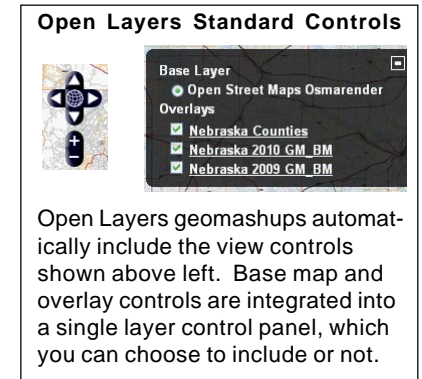
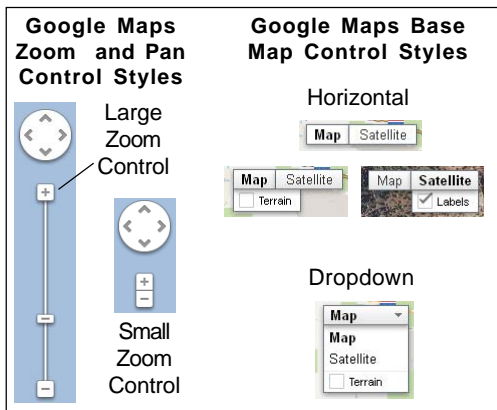
Other aspects of the Assemble Geomashups process are covered in the Technical Guides on *Geomedia Publishing* entitled *Introduction to Geomashups*, *Managing Custom Base Maps for Geomashups*, *Managing Custom Overlays for Geomashups*, and *Geomashup Data Management Options*.



## Base Map and View Controls

The Map Control Options section of the Options panel allows you to select among the standard controls and features that are available for the web mapping API you have selected. The Map Control Options sections for Google Maps and Bing Maps are shown in separate illustrations above right.

Standard map control options for Bing Maps. The Dashboard Size menu provides a choice of the control styles illustrated below.



The Google Maps geomashup interface has zoom and pan controls in the upper left corner of the map view and a separate base map control in the upper right for switching base maps (proprietary and custom). You can choose from large or small versions of the zoom control, or select an Automatic option that dynamically switches between large and small controls depending on the size of the browser view. A toggle button lets you choose whether to include the pan control. Two styles of base map control are available: a horizontal style or a dropdown menu. You can also choose to omit the base map control.

Open Layers geomashups automatically include the view controls shown above left. Base map and overlay controls are integrated into a single layer control panel, which you can choose to include or not.

In Bing Maps, basemap selection and view controls are integrated in dashboard control sets (illustrated above center), which you can select using the Dashboard Size menu in the Bing Maps version of the Map Control Options. The Small and Tiny options are suitable for geomashups designed for mobile devices.

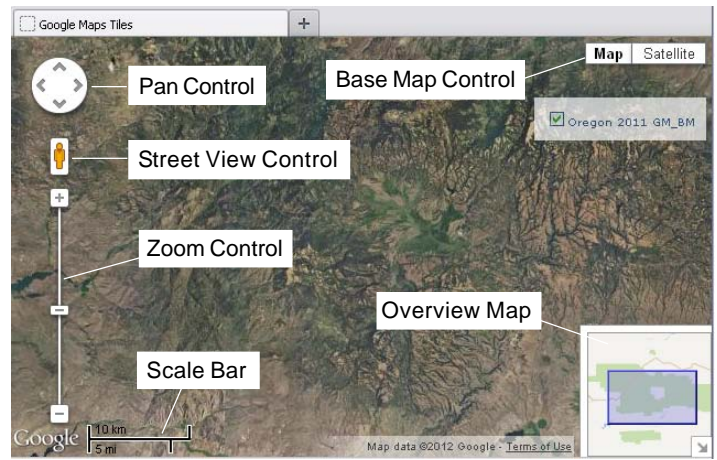


Mandatory 3D control set for the Google Earth browser plugin.

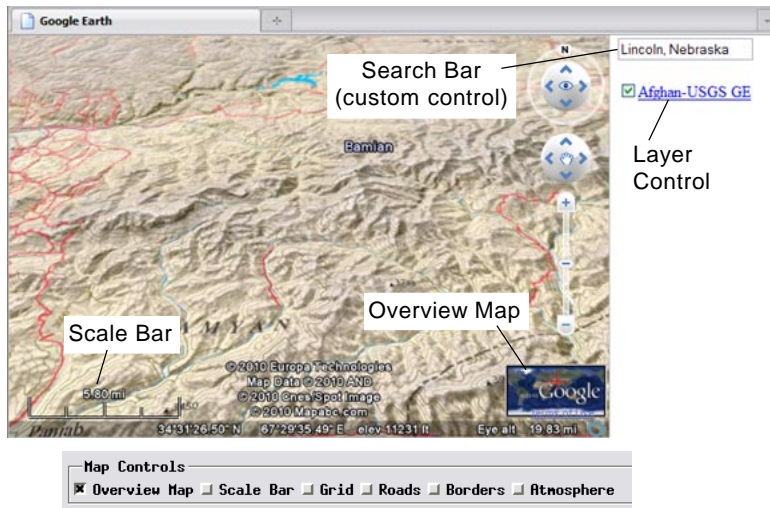
(over)

There is no Map Control Options grouping on the Options panel for Google Earth, as Google Earth geomashups are automatically provided with a single mandatory 3D view control set (illustrated on the other side of this page, bottom right), and no base map controls are available in Google Earth.

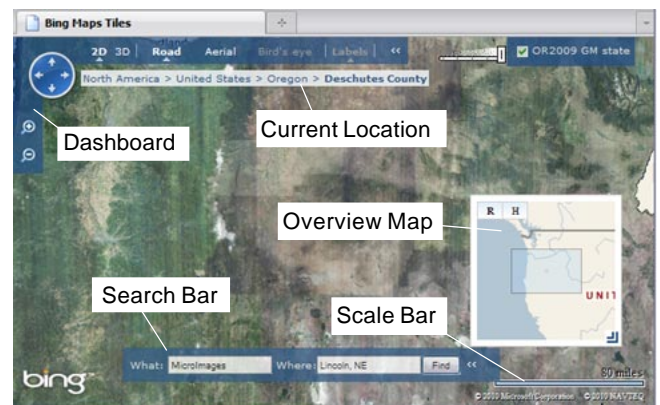
Open Layers geomashups are also automatically provided with a single mandatory view control set. Base map selection is controlled by check boxes integrated into a general layer controls panel for both base maps and overlays. You can choose whether or not to include the layer controls (via a Layer Controls toggle) and, if included, whether the layer controls panel should be initially open or collapsed to an icon. The Open Layers standard controls are illustrated on the other side of this page, middle right.



Standard map controls and enhancements available for use in Google Maps geomashups.



Map controls and enhancements available in a Google Earth geomashup.



Standard map controls and enhancements available in Bing Maps geomashups.

### Additional Enhancements

In Google Maps, Bing Maps, and Google Earth geomashups you can include additional enhancement features provided by the selected API. You choose these options using toggle buttons in the Map Control Options grouping on the Options tabbed panel.

Geomashups for Google Maps, Bing Maps, and Google Earth can include an overview map inset and scale bar. A current location indicator, which shows a sequence of progressively more specific location labels at the top of the geobrowser view, is available for Bing Maps and Google Earth. A standard search control is provided for Bing Maps geomashups, while a similar capability is available for Google Earth geomashups from the Custom Control Options; see the *Geomashup Custom Overlay Controls* TechGuide for details. In addition to these on-screen controls, for Google Maps geomashups you can choose to implement zooming by double-clicking in the view and by using the mouse wheel. The checklist to the right lists the standard controls and their availability by API. The various controls are also shown for each geobrowser type in the illustrations above.

For Google Earth geomashups the Map Control Options also include toggles to enable atmospheric effects and to add the Google Earth reference overlays listed below:

- Grid: latitude/longitude grid lines
- Roads: roads and road names
- Borders: country and area borders and place names.

Additional Enhancements Checklist			
Control	Google Maps	Bing Maps	Google Earth
Overview Map	✓	✓	✓
Scale Bar	✓	✓	✓
Current Location		✓	✓
Search Bar		✓	
Double-click Zoom	✓		
Mouse Wheel Zoom	✓		
No enhancements are available for use in Open Layers geomashups.			