

System

Preview Local and Internet Geodata Layers

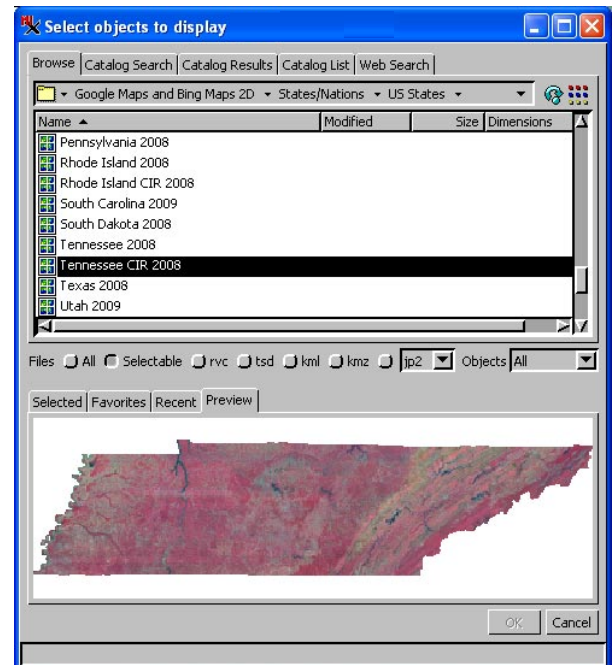
The TNT products let you preview any supported geodata layer (local or Internet-based) prior to adding it to your composite view or other application. The preview feature is especially useful when selecting Internet-based maps and images if you have uncertainty about what is actually published. It is also useful for local layers that you may not be familiar with. Once you decide a layer is what you want, you can select it for use by clicking on the icon for the layer or by double-clicking on the layer name.

Local layers can be on your computer or a LAN in Project File format or any of the numerous other file types supported for direct use (see the Technical Guide entitled *System: Direct Use of Geodata Files* for a listing of local data types in other formats that are supported). Internet-based layer types supported include

- KML files,
- maps in a My Maps collection,
- standard Google Maps, Bing Maps, Google Earth, and World Wind tilesets defined by a TSD link file,
- and layers published by an ArcIMS or WMS service.

The Preview tab shows you the item highlighted on the Browse tabbed panel. For a general discussion of the features of the integrated selection dialog, see the Tech Guide entitled *System: Using Internet-based Maps and Images*.

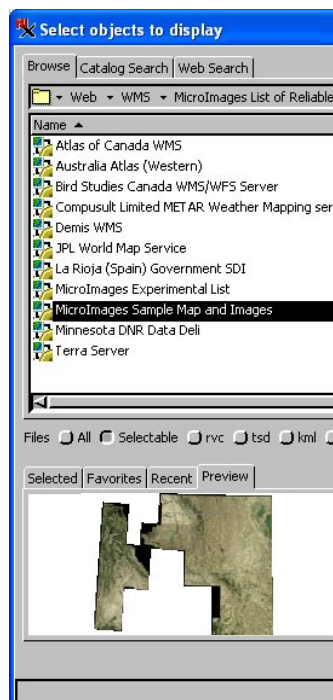
Google Maps/Bing Maps web tileset



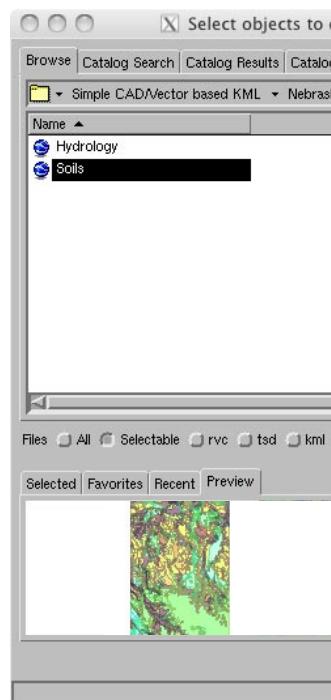
Google Earth web tileset



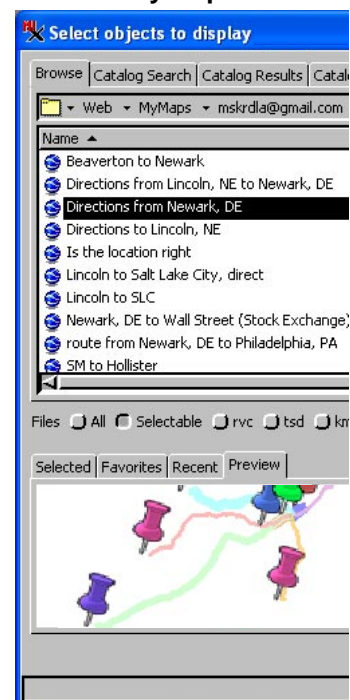
WMS



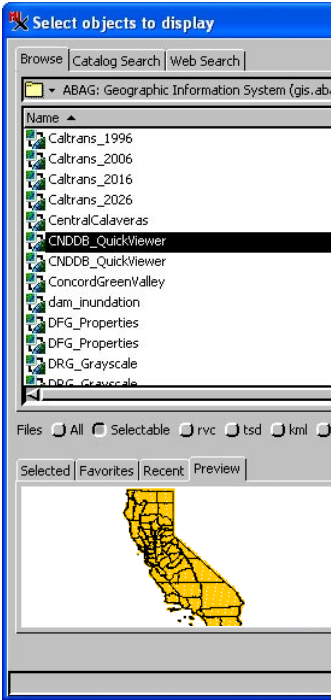
KML



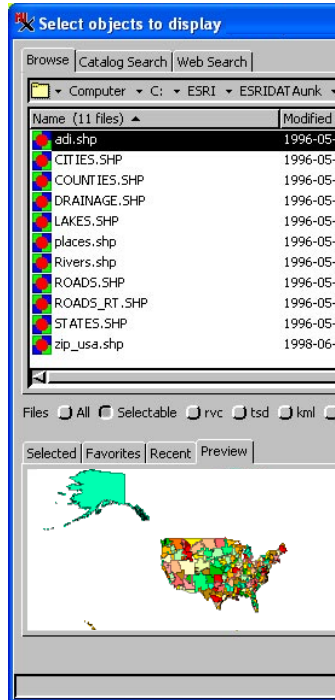
My Maps



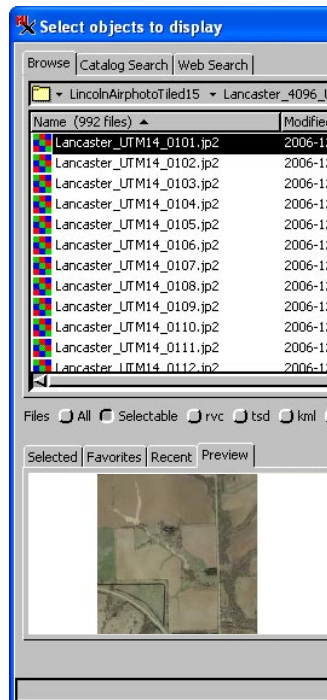
ArcIMS



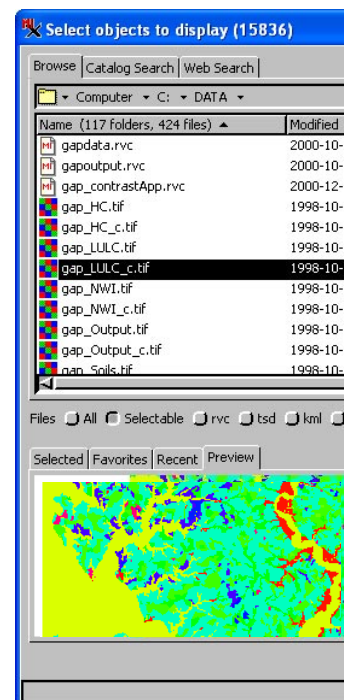
shapefile



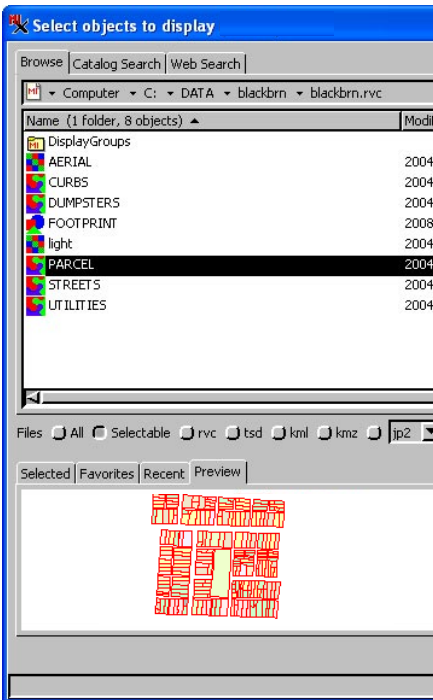
GeoJP2



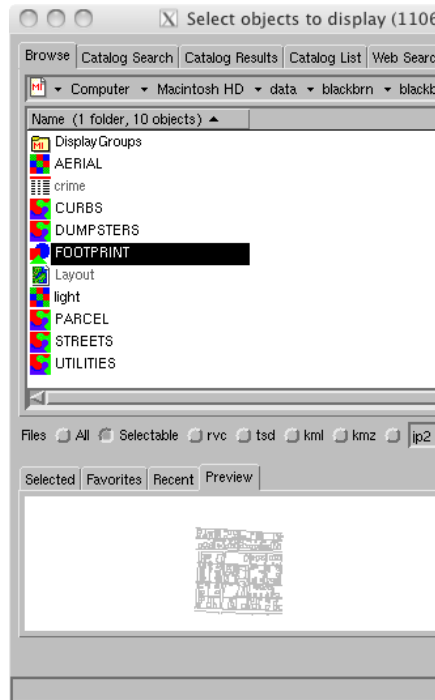
GeoTIFF



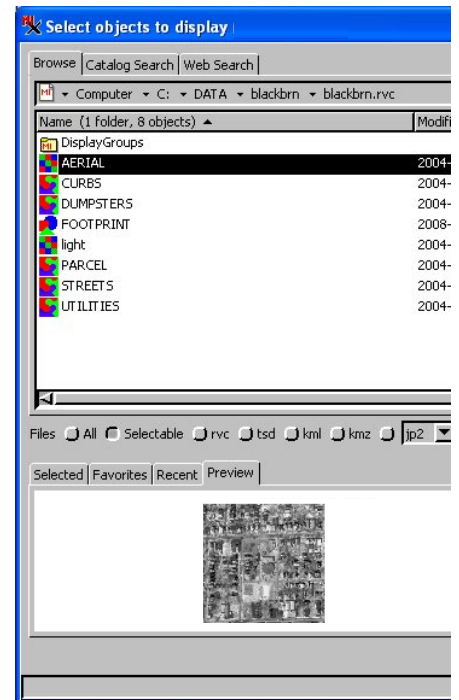
RVC vector object



RVC CAD object



RVC raster object



Additional external formats supported for direct use and preview:

raster

- PNG
- MrSID
- JPEG
- GIF
- ERDAS (*.img, *.lan)
- DOQQ
- DTED

- Windows Bitmap (*.bmp)
- NetCDF
- Arc Binary Grid (*.adf)
- SDTS (*.ddf)

shape

- Oracle Spatial

CAD

- DGN
- DXF
- TAB
- DWG