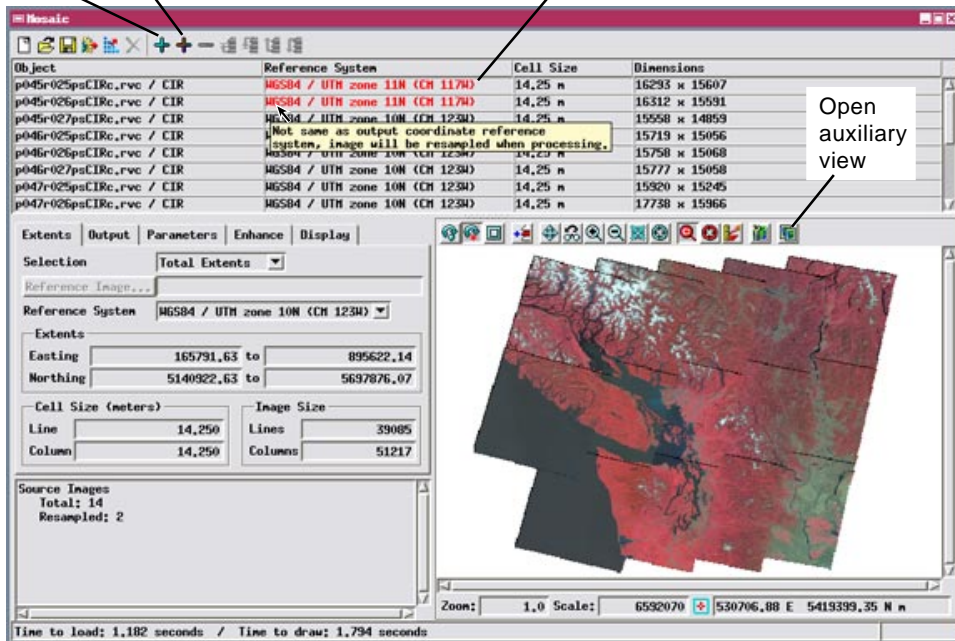


## Mosaic

# Redesigned Process is Flexible and Fast

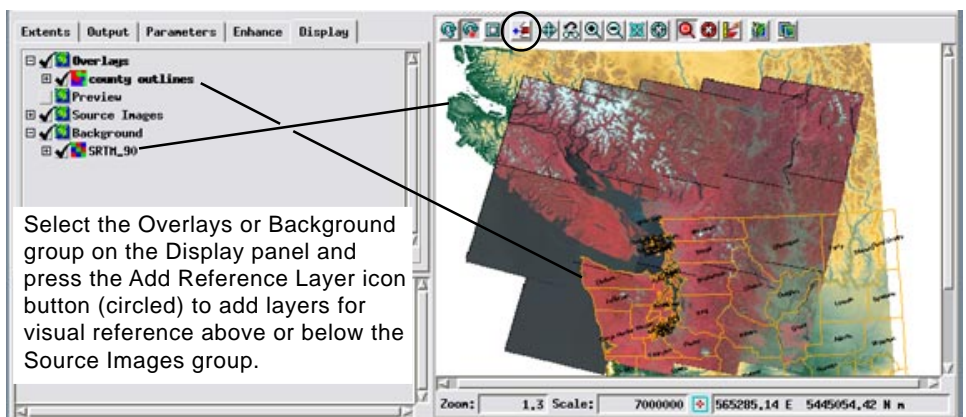
MicroImages has redesigned the Mosaic process to provide greater convenience, flexibility, and important new features. The major new features include a revamped control window, mosaicking to a TNT tileset raster, reprojection to any coordinate reference system, and multiband mosaics. Under the hood the new Mosaic process uses the TNT image processing pipeline for very rapid throughput of even very large datasets.

Add Add RGB Separates Input images that will be reprojected are shown with their Reference System in red. A DataTip explains the color highlighting.



The Mosaic window has been redesigned to provide the critical information you need as you assemble your mosaic. The window incorporates an expanded list for the input images, showing the reference system, cell size, and dimensions of every input object. The reference system and cell size entries for an object are highlighted in red if they differ from that of the output mosaic; if an object falls completely outside the designated extents of the mosaic, its name is highlighted in blue. Pausing the mouse over a highlighted field in the list triggers a DataTip that explains the highlighting.

The Mosaic window also includes tabbed panels for setting processing parameters and an integrated View to show the input images. You also have the option to open a resizable Auxiliary View window if needed. Multiple display groups are pre-defined for these views and shown on the Display tabbed panel, as shown to the right. The Source Images group contains the input raster images. You can add objects to two additional groups for visual reference while assembling your mosaic:



the Background group below the Source Images group and the Overlays group above it. An Extents Reference group is added to the views if you choose to mosaic to match a reference image.

The Selection menu on the Extents tabbed panel controls the spatial extents and other spatial characteristics of the mosaic. The Match Reference option matches the mosaic to the extents,

reference system, and cell size of the designated reference image. The Total Extents option (as shown in the illustration to the left) uses the total extents of the input objects and allows you to choose the reference system and cell size (or image size) of the mosaic. With this option you can choose the coordinate reference system for the mosaic from among those associated with the input objects or choose a different reference system. The predominant reference system used by the input images is set as the initial default for the mosaic. The Reference System menu on the Extents tabbed panel lists all reference systems used by the input objects, allowing you to easily select any of them, and provides a Specify option that automatically opens the Coordinate Reference System window so that you can select from any reference system supported by the TNT products. The mosaic and auxiliary views show the input objects

(and any reference objects) projected to the designated output reference system, and these views automatically update when you change the output reference system.

The output mosaic can be stored as a standard raster object or as a TNT tileset raster; the latter option is discussed in detail in the Technical Guide entitled *Mosaic: Mosaic Directly to TNT Tileset*. You can mosaic grayscale images, color images (RGB separates and/or color composites), or multiband image sets; more details on these options are provide in the TechGuide entitled *Mosaic: Grayscale, Color, and Multiband*.