

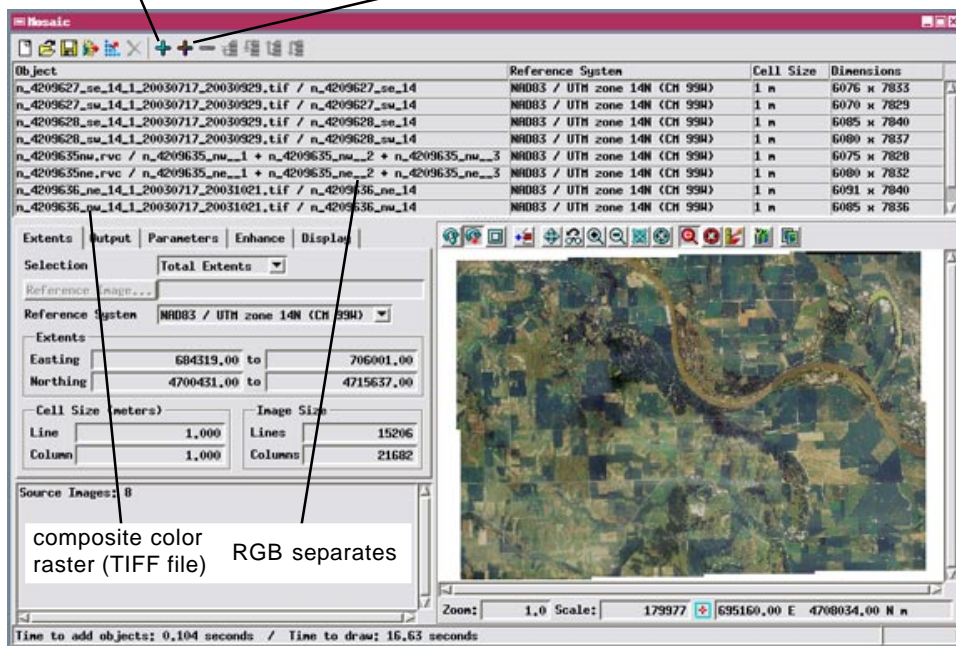
Grayscale, Multiband, and Color

The new Mosaic process in TNTmips allows you to mosaic grayscale, color, or multiband images. For color mosaics the inputs can include both RGB raster sets (RGB separates) and single-raster color-composites.

or QuickBird scenes. Begin by using the Add icon button to select the desired spectral bands from the first image. The selected bands in the multispectral scene must be exactly coincident (same dimensions, cell size, extents, and georeference). If so they are added to the layout as a multi-

band object with one entry in the Object list. Each subsequent use of the Add icon button then requires selection of the same number of coincident bands from your other input images; these bands should be selected in the same order each time. The Add RGB Separates button is disabled. (Note that you cannot mix bands with different resolution from the same image, such as multispectral and higher-resolution panchromatic bands; you would have to separately mosaic the panchromatic band for all the scenes.)

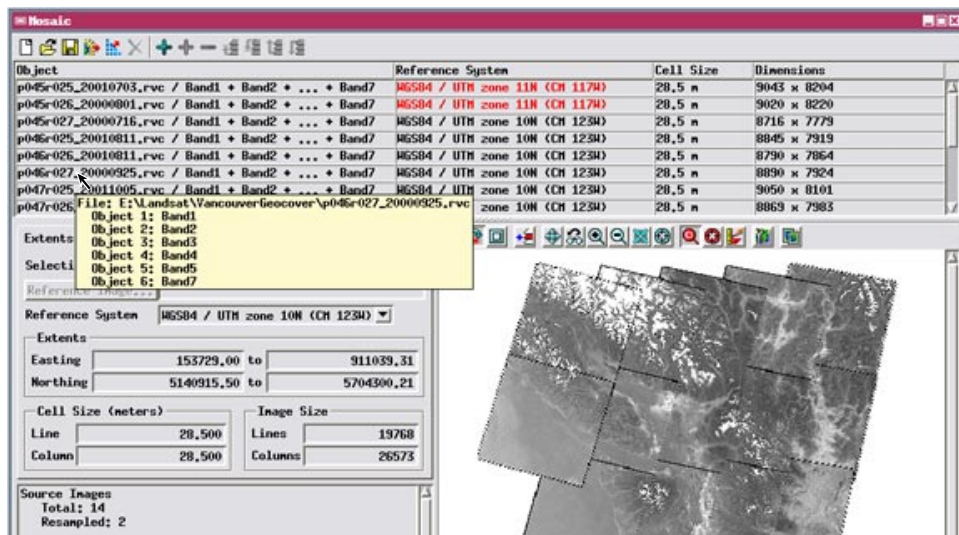
To mosaic a set of single-band images (grayscale or with color palettes), simply use the Add icon button to select one or all of the images. Each raster is added to the layout as a separate object, the Add RGB Separates button is disabled, and the Add button does not allow selection of an RGB composite image. Further information about the Mosaic process can be found in the Technical Guides entitled *Mosaic: Redesigned Process is Flexible and Fast* and *Mosaic: Mosaic Directly to TNT Tileset*.



You add images to a mosaic layout using two icon buttons on the Mosaic window. Use the Add RGB Separates icon button to add a set of three matching rasters as an RGB color image. Use the Add button to add all other image types.

The mosaic mode (single, color, or multiband) is automatically determined by the first images you choose. To make a color mosaic, begin by using the RGB Separates button to add a color image or select one or more color-composite images (24-bit or 16-bit) using the Add icon button. From that point on, the Add icon button only allows selection of color composite rasters, and the Add RGB Separates button remains active to allow addition of more RGB raster sets.

The multiband mode allows you to simultaneously mosaic some or all of the individual multispectral bands for a set of images, such as Landsat, IKONOS,



A multiband mosaic layout. Use the Add button to select multiple bands with matching dimensions and georeference for a multiband mosaic. A DataTip on the object list shows details about the underlying input image.

MicroImages, Inc. • TNTgis - Advanced Software for Geospatial Analysis
 Voice (402)477-9554 • FAX (402) 817-0151 • email info@microimages.com • web www.microimages.com • October 2007