


## GeoToolbox

# Erasing Portions of Lines and Polygons

 The GeoToolbox provides integrated sketching, measuring, selection, and region creation by letting you switch seamlessly between these activities. You can immediately get measurements for any sketch element you draw or add any element used for measuring to a sketch. Closed shapes initially drawn for measuring or as part of a sketch can be converted to regions and used for selection by the GeoToolbox.

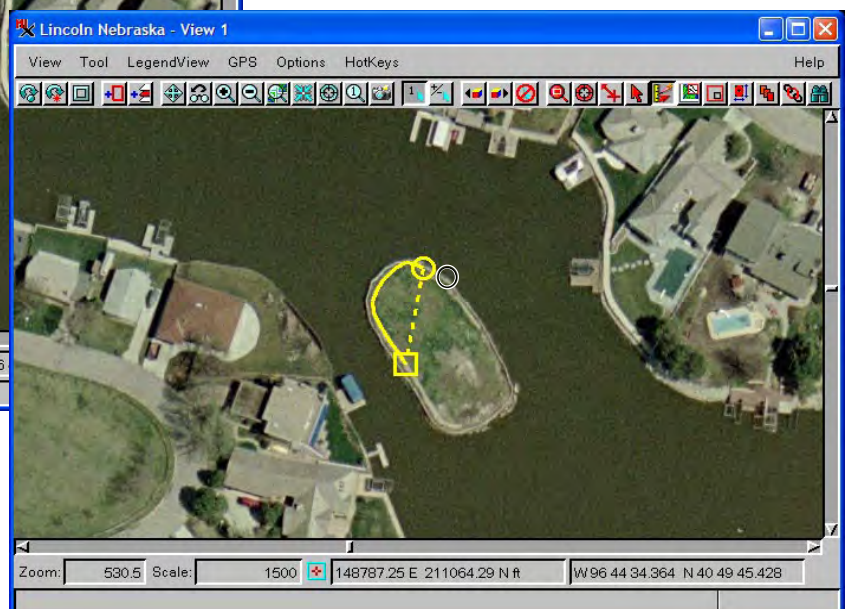
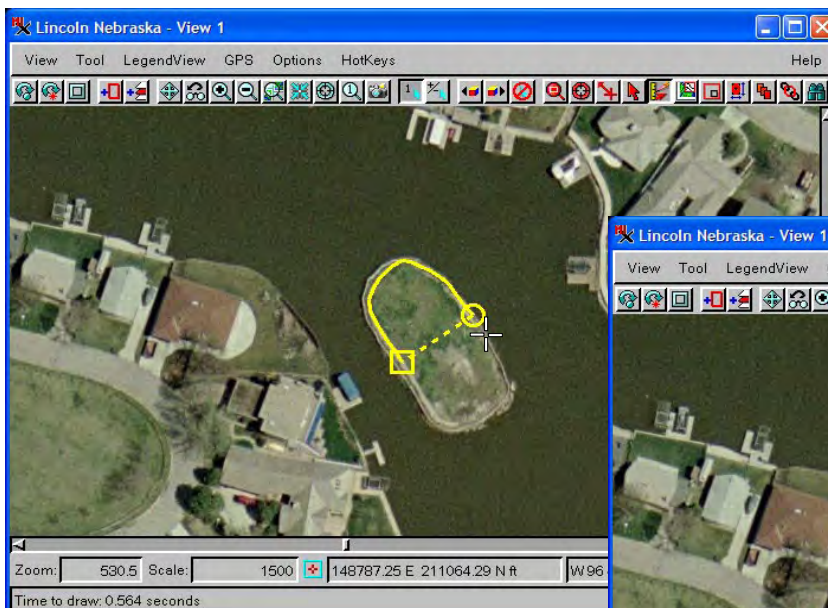
The line and polygon tools switch between drawing and erasing by changing which mouse button you press or by using opposite ends of the stylus with a digitizing tablet. Switching from the left mouse button to the middle mouse button where you click changes you from drawing to erasing without having to go to the Controls panel of the GeoToolbox to change the operation. This simple control makes switching between drawing and erasing nearly effortless.

The cursor used when drawing is a crosshair with an open area in the center so you can see the pixel(s) beneath where you click. The crosshair is white with a black outline so

it is visible over all backgrounds. When erasing, the cursor is a circle, which is also white and black.

Erasing capability is only active with the add-to-start, add-to-end, and insert vertex operations for line and polygon drawing. Use the eraser near the start or end of the line (depending on the selected add operation) to erase the first/last vertex. If the Insert Vertex operation is selected on the Controls panel of the GeoToolbox and you use the eraser, the nearest vertex on the line is removed. Your erasing method will match your line drawing mode. If using Draw mode, click and drag to erase your line. If using Stretch mode, click near each vertex that you want to delete. Remember that you need to be near the end of the line/polygon selected for the add operation and work in from there. You cannot erase from the start then from the end of the line or switch to removing vertices in the middle without changing to the appropriate operation on the Control panel of the GeoToolbox

To resume drawing your line/polygon, simply switch to the left mouse button for your clicks or the opposite end of the stylus. For digitizing tablets that have a stylus with erase capabilities, you need to configure the erase function to middle-click or button 2.



You can switch instantly between drawing and erasing by changing the mouse button you use or flipping your digitizing stylus over. The line above was drawn in Stretch mode and partially erased (right) with a few middle-clicks of the mouse.