

Viewing Geotagged Image Tables

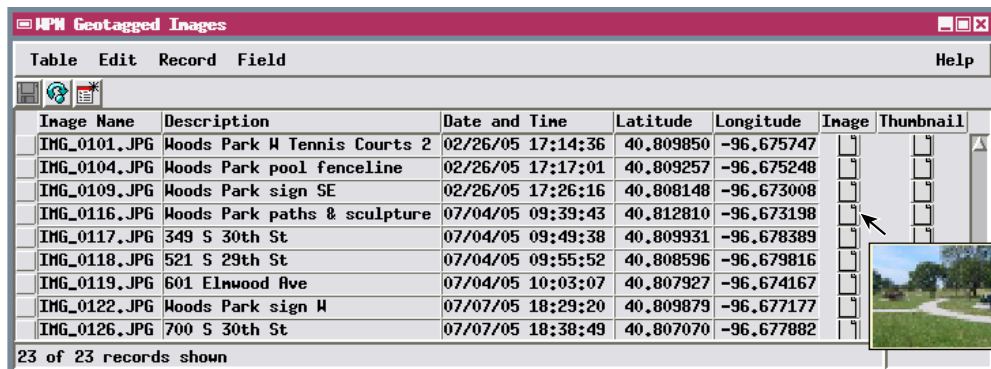
Tables of digital photos produced by the Create Geotagged Image Database process can be shown as either Single Record or Tabular Views just like any other database table. But each type of view not only shows the text/numerical attribute information for the photos, it also allows you to view the photos. Photo viewing is available for tables with links to external image files as well as for those with embedded images.

In a Single Record View of the table, in which the field names and values for a single record are listed in a vertical column, the image for the current record is automatically shown at the bottom of the table view. The image resizes automatically when you change the size of the single record view window. A right mouse button menu for the image allows you to zoom to extents, zoom in or out, or zoom to 1X. You can also use the mouse scroll wheel to zoom in or out, and pan the image by left-clicking and dragging.

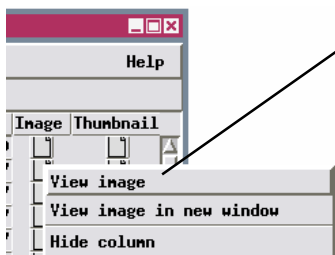
Tabular Views provide several means of viewing the photos. Hovering the mouse cursor over a photo's Image field pops up a DataTip showing a small thumbnail of the image. For tables with embedded images, the thumbnail stored for each image when the table was created is used to generate the DataTip image. For tables with links to the original image files, the DataTip thumbnail is created dynamically from the external file as needed. You can also view photos in one or more separate image viewer windows using options on the right mouse button menu for the Image field. The *View image* menu option opens the selected image in the currently-open viewer window (or opens one if none is currently open). The *View image in new window* option allows you to open separate simultaneous views of different photos. The titlebar of each viewer window shows the description (from the Description field in the image table) and file name of the image being viewed. The viewer windows can be resized as needed, and icon buttons provide zoom functions. Mouse-wheel zooming and left-mouse panning are also provided as for the Single Record View window. The image viewer can show linked JPEG, TIFF, or PNG files in addition to images embedded in the table. For more information on creating geotagged photo tables, see the Technical Guide entitled *Digital Photos: Geotagging Digital Photos*.



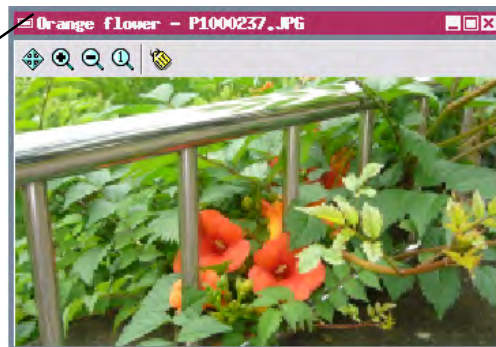
A Single Record View of a geotagged image table (above) automatically shows the image for the current record in the bottom part of the same window. Right-click on the image to pop in a menu with zoom and other options. This example shows a table with linked (rather than embedded) images.



In a Tabular View of a geotagged image table (left), a DataTip showing a thumbnail of the image automatically appears when you hover the mouse cursor over its entry in the Image field. This example shows a table with embedded images.



The right mouse button menu for the image field in a Tabular View allows you to view the image in a separate image viewer window that can be resized if needed. The viewer window provides buttons to zoom to full extents, zoom in and out, and zoom to 1X. The mouse scroll wheel can also be used to



zoom in and out. You can pan a zoomed image by left-clicking on the image and dragging. The Image window above left is at full extents; the one above right has been zoomed to 1X and panned.

