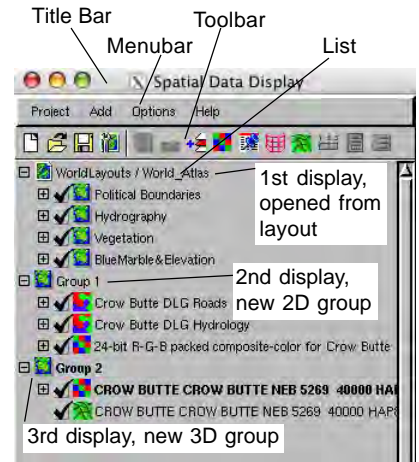


# Spatial Display

# Technical Terminology

There are many words in any discipline that have a specific meaning for that context, which is not necessarily what the word means in general conversation. TNT 2006:72 is adding some words to its technical vocabulary. These words are further defined in the booklet entitled *Glossary for Geospatial Analysis* distributed with the TNT products.

**Display.** A display is any grouping of one or more layers intended for rendering together in a single view. A display can be a 2D group, a 3D group, a display layout, or a page (hardcopy) layout. The active display is shown in bold (display named Group 2 is the active display at the right). You can zoom in and out and use other view-oriented tools merely by giving focus to that display's view and choosing the tool, but many options in the Display Manager window, such as adding layers, apply to the active display and the active group within it. A display encompasses both the View window(s) associated with the display group or layout and its components in the list in the Display Manager. The hierarchy of terminology including window components is outlined below. See the Glossary for definitions of these terms.



## I. Display Manger window

- A. title bar
- B. menubar
- C. toolbar
- D. list

### 1. display group (standalone group)

- a. layer
  - 1) element
  - a) table
  - b) legend
- 2. display layout (use layout alone if mean both display and page)
  - a. group (2D or 3D)
  - b. (same as above, starting with I.D.1.a.)
- 3. page layout (use layout alone if mean both display and page)
  - a. group (2D or 3D)
  - b. (same as above, starting with I.D.1.a.)

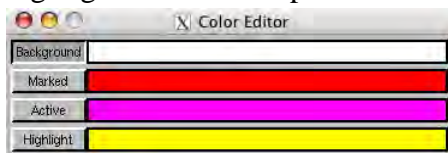
## II. View window

- A. title bar
- B. menubar
- C. toolbar
- D. LegendView
- E. view canvas

### 1. view (what's on the view canvas)

Icons	
Layer	Element
Raster	Point (vector)
Vector	Line (vector)
Shape	Polygon (vector)
CAD	Node (vector, TIN)
TIN	Edge (TIN)
Region	Raster Cell
Sketch	CAD Element
	Sketch Element

**Mark/Select/Highlight.** Previously, the word *selected* was used to mean both elements selected in the Layer Controls window for viewing and elements selected with the mouse or by query in the View window, which caused some confusion. The current terminology (TNT 2006:72 and newer) uses *selected* to mean those elements selected for display in the Layer Controls window. The elements selected with the mouse, by query, or from a record in a tabular view that are then changed to the user-chosen color to prompt some further action are referred to as *marked*. Highlighted and selected (meaning selected by mouse or query) have also been used fairly interchangeably. This usage is also being replaced by *marked*. The word *highlight* is being reserved for transient events, such as mouseover highlight. This more precise vocabulary is now used in many places in the TNT products interface. Choosing



Options/Colors in the View window opens the Color Editor window so you can set marked, active, and highlight colors in the Display process, the Editor, and any process that has a View window in which element selection is allowed. Older documentation may use select and highlight ambiguously.