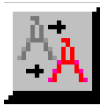


Spatial Editor

Convert Dynamic Labels to Fixed Labels



The TNT products offer two label types for vector objects: dynamic labels and permanent, or fixed, labels. Dynamic, or on-the-fly, labels are generated when the object is displayed while permanent labels are elements in the vector object that may have been imported or generated in the Editor. Dynamic labels provide an easy means to label vector elements in any process with a View window that has access to the Vector Layer Controls. You can choose the label position and different optimization options for points (shown at the right). A number of position options with and without leader lines are available for dynamic polygon labels. You can also set a visible scale range for both dynamic and permanent labels. However, all dynamic labels for an object are the same style, and all labels may not be placed to your liking. Both of these limitations can be overcome by creating permanent labels to replace some or all of the dynamic labels. When you have a mixture of dynamic and permanent labels in an object, the dynamic labels are suppressed in the Display process for any element that also has a permanent label. Dynamic label options are set on the Points, Lines, and Polygons tabbed panels of the Vector Layer Controls window. Permanent label display options are controlled on the Labels panel of this window.

Default
Upper Left
Upper Center
Upper Right
Left Center
Centered
Right Center
Lower Left
Lower Center
Lower Right

point label position options

None
Fast, With Overlapping Labels
Fast, Hide Overlapping Labels
Full, With Overlapping Labels
Full, Hide Overlapping Labels

point label optimization options

Always Inside
Fit Inside or None
Fit Inside or Outside with Leader
Fit Inside or Outside without Leader

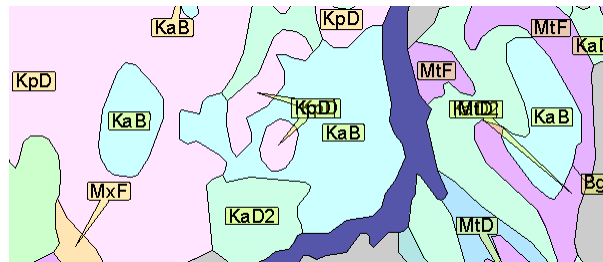
polygon label position options

There are three ways to create permanent labels in the Editor: add text labels not associated with (attached to) any element; auto-generate labels for selected points, lines, or polygons using entered text, attributes, or a script; and converting dynamic labels to permanent labels for selected points, lines, or polygons. The Convert Dynamic Labels tool uses the style, placement, and text settings you already assigned to an object's dynamic labels to create permanent labels for selected elements.



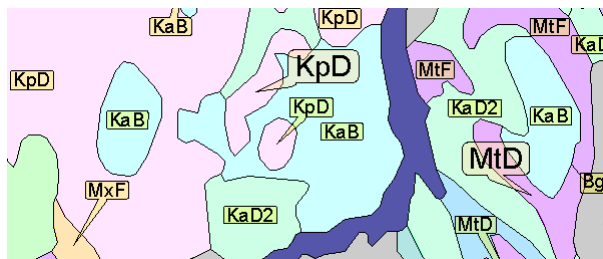
To create permanent labels from dynamic labels, click on the Edit Elements button in the Vector Tools window. If you want permanent labels for selected elements only, select the desired elements using the Select tool in the Edit Elements window or by some other means, such as a query. Then click on the Convert Dynamic Labels icon. Your options for this operation are Active, Marked, or All. After you have permanent labels, you can change their position and style using the Edit or Label Attributes operation. You can also add the Convert Dynamic Labels operation to the right mouse button menu (Setup/Right Mouse Button) available when the Edit Elements window is not open and browse through the dynamic labels for the points, lines, and/or polygons in your object and right-click and select that menu option to convert the label for the element under the cursor.

●pack ice
 ●Mys Utkholokskiy
 ●Mys Zubchatyy
 ●Mys Yuzhnyy
 converted from dynamic labels in default position



Some of the dynamic labels in this vector soil map conflict, or overlap.

pack ice
 Mys Utkholokskiy
 Mys Zubchatyy
 Mys Yuzhnyy
 converted from dynamic labels in upper center position



Two permanent label elements were added and edited to resolve the conflict. The label elements were also made larger for your easy identification in this illustration. Other remaining labels are still dynamic labels.