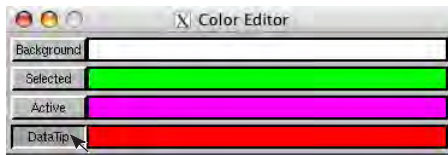


## Spatial Display

# Automatic Highlighting of Vector Elements

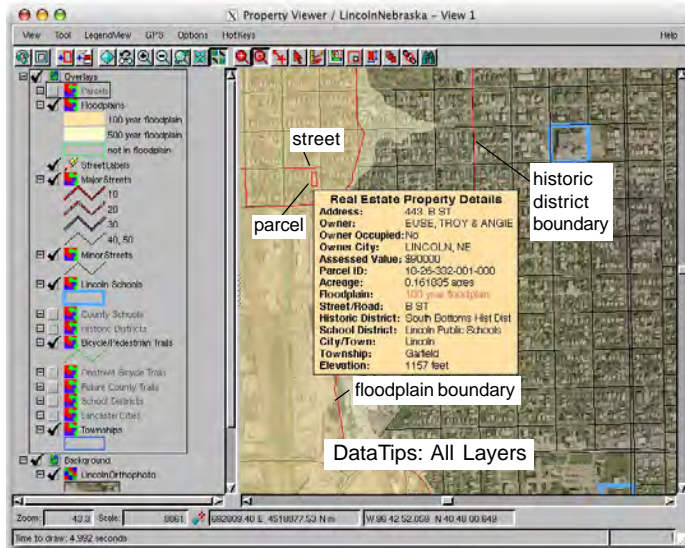
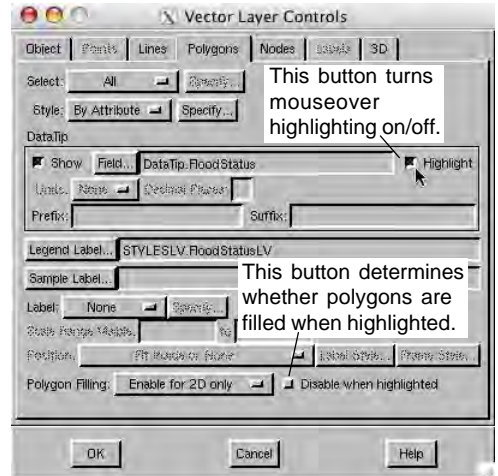
The TNT products' visualization processes provide DataTips (selected attribute information) for elements under or near the cursor when it is paused. You can interactively identify the elements that contribute to the DataTip for the



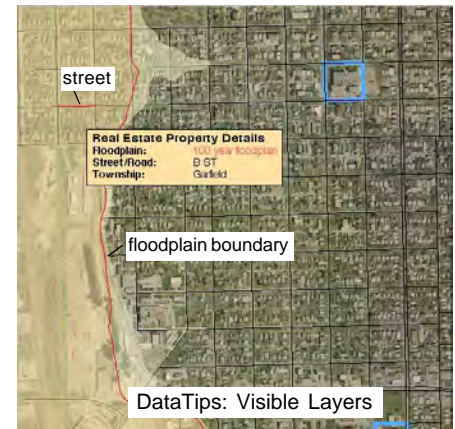
current cursor location by choosing to show them in highlight when a DataTip is shown. This highlight color can be different than the highlight colors for selected elements. Use Options/Colors/DataTip in the View window to set

this color. Your selection does not change the DataTip color, only the color used for mouseover highlight of the features to which the DataTip applies. The number of elements highlighted for any cursor location depends on the layers in the view and their DataTip settings. If DataTips are not set up for a layer, there is no mouseover highlight for elements in that layer.

Highlighted polygons will be filled/not filled according to the vector layer's polygon filling settings, which are in the Vector Layer Controls window.



When DataTips are set to appear for all layers, the nearest element for all layers with DataTips turned on will be highlighted (left). When DataTips are set to show for visible layers only, you will not get highlighting of elements in layers that are not drawn in the current view (right). When DataTips are set to none, there is no mouseover highlighting.



The illustrations above have polygon filling disabled when highlighted for all layers. In a complex layout, such as shown above, having polygon filling on when highlighted for many of the layers, such as floodplains or historic



districts, would obscure the mouseover highlighting of most other layers. In a simpler layout, such as shown at the left and right, you can use solid fill for mouseover highlighting without any loss of information.

The illustrations at the left and right show mouseover highlighting of a single hidden layer when the DataTips viewing option is not set to None or Visible Layers. If you want mouseover highlighting without DataTips (right), do not assign attributes in the field used for DataTips.

