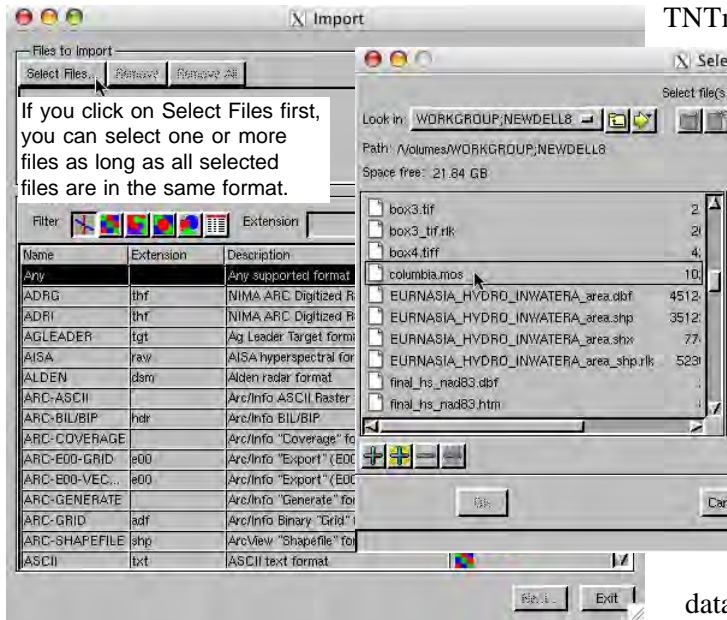


Import

Selecting File First



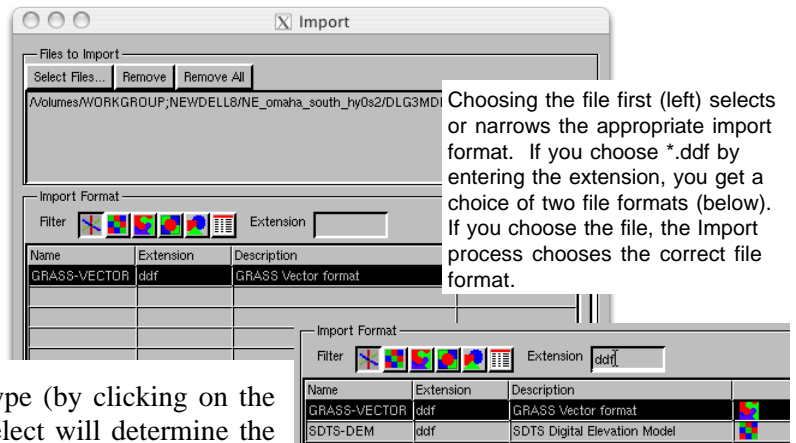
TNTmips' Import process lets you select either the file or the format first. This color plate describes the features associated with selecting a file as the first step for import. Selecting the format first is discussed on the companion color plate entitled *Import: Selecting Format First* along with other introductory information.

If you click on the Select Files button for Import with the format set to the default *Any supported format*, you can choose a file in any format, which is particularly useful when you are working with data you are not familiar with. For example, you may have files you were told you could use in TNTmips but you do not know that you should choose MRLC (Multi-Resolution Land Characteristics) for the *.dda file you have. Additionally, some file formats use the same extension for more than one data type, so unless you are familiar with the data, you may not know which choice to make from the complete list or which

data type icon to select before choosing the file format from a shortened list. Clicking on the Select Files button as a first step

lets the Import process determine the object type for you. Be aware, however, that you may select a file that is not supported by import. In such a case, you will be warned that the file type may not be supported and, if you choose to proceed with an unsupported format, you will get no output.

There is not always a one to one correspondence between a file extension and the file format and object type. For example, five different raster formats that TNTmips can import use a .img file extension. Files in Spatial Data Transfer Standard (SDTS) and GRASS formats have the same file extension (.ddf) and may contain either raster or vector data. If you select a file with an extension that is used by more than one format that can have more than one data type without first restricting the data type (by clicking on the raster, vector, CAD, or database icon), the file you select will determine the data type and you will be offered a choice on the format list between the



different file formats that use the same extension.

Some file formats can be imported as vector or CAD. If you click on Select and choose a file in one of these formats without first clicking on the vector or CAD data type icon, you specify the desired object type in the Import Parameters window that opens after you click on the Next Button. The data type will be specified for you if you click on the vector or CAD data type icon before you select the file.

Multiple files/objects can be selected for import or export, but they must be the same file or object type (for example, all shapefiles or all raster objects). The Format menu presents all export file formats for the data type you have selected.

