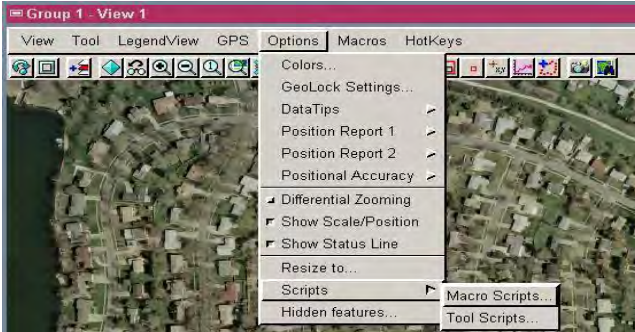
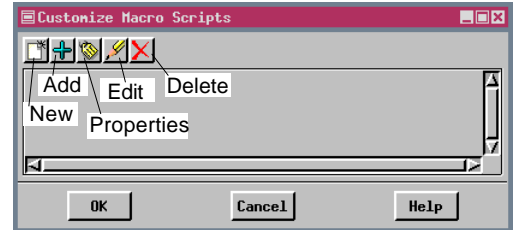


Macro Script Setup

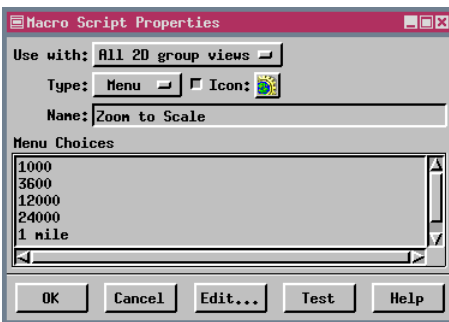


Macro Scripts and Tool Scripts add a powerful way to use Spatial Manipulation Language (SML) in your TNT products. To add a Macro Script so it can be run from an icon on the View window toolbar or the Macros menu that can be optionally shown once a Macro Script is added, choose Options / Scripts / Macro Scripts from the View window. Making this selection opens the Customize Macro Scripts window.

Click on New if your script is not yet written or click on Add if you



already have a script (Process / SML / Edit Script). Clicking on New opens the Query Editor window, which is used to prepare / edit SML scripts. A few predefined symbols that may be of use appear as comments when the Query Editor opens. The same features available for script construction in the SML process are available here. You are prompted to save your script when you click on OK in the Query Editor. Once the script is saved, the Macro Script Properties window opens. Clicking on Add opens the Select File window so you can locate the script you want to use. Only *.sml files are listed by default—you need to change the *Files of Type* option to all if your script has a different file extension or has been saved as an RVC object. Once the script is located and you click OK, the Macro Script Properties window opens.



The Macro Script Properties window lets you choose an icon, indicate whether the script is for a simple or a menu button, set up the ToolTip, enter menu items if a menu button is used, indicate whether the script should appear for all groups/layouts or only with the current one, and test your script. Clicking on the Icon button opens the Select Icon window so you can choose another icon from the more than 700 icons in this size available with TNTmips. The Type option menu offers two choices: Simple button and Menu button. A simple button automatically executes its script without further input from the user. A menu button drops down a list of choices that determine the outcome of running the script. If Menu button is chosen in the Macro Script Properties window, the Menu Choices text field becomes active so you can enter the menu choices

you want available when you click on the Macro Script icon on the View toolbar or select the script from the Macros menu. Each line in the Menu Choices field represents a separate menu choice. Enter the ToolTip you want directly in the Name field. This ToolTip will appear when the cursor is paused over the Macro Script icon in the View window. The Test button at the bottom of the window lets you run your script without closing the customize windows. If the script does not perform exactly as anticipated, the Edit button at the bottom of the window opens the Query Editor containing the script so you can make modifications.

Click OK in the Macro Script Properties and Customize Macro Scripts windows when you are done adding, developing, and/or testing your script. Return to the Customize Macro Scripts window anytime to add or delete scripts, or open the Macro Script Properties window (click on Properties icon in Customize Macro Scripts window) to change the icon, ToolTip, or menu choices.

