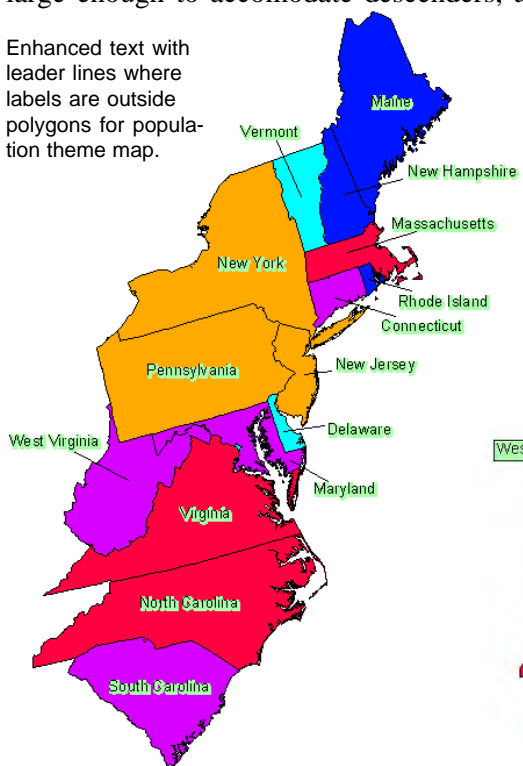


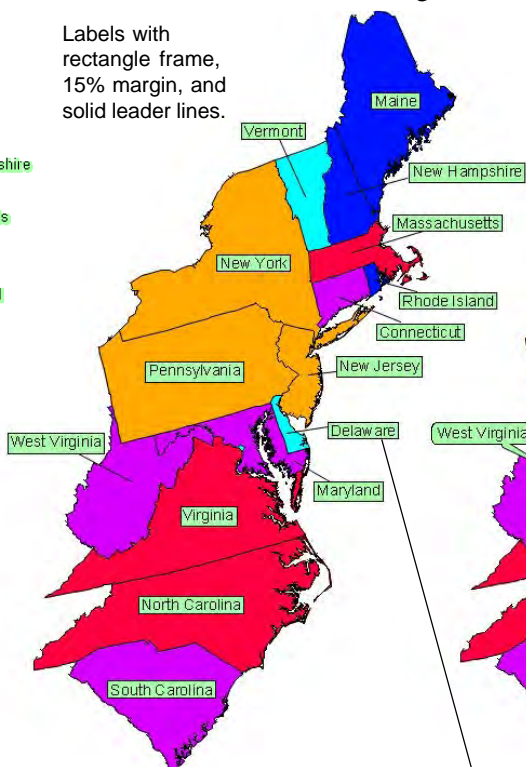
Label Frames and Leader Lines

In addition to simple labels with leader lines, you can now add frames to labels in a variety of styles and choose between simple line or triangular leaders when using frames. A number of options for the position of labels are available: Always Inside, Fit Inside or None, Fit Inside or Outside with Leader, and Fit Inside or Outside without Leader. You must choose a label position that includes leaders to use any leader line settings. The margin between the label text and the frame border can be set independently for all four sides of the label. If the designated margin is large enough to accommodate descenders, all frames will be the same height.

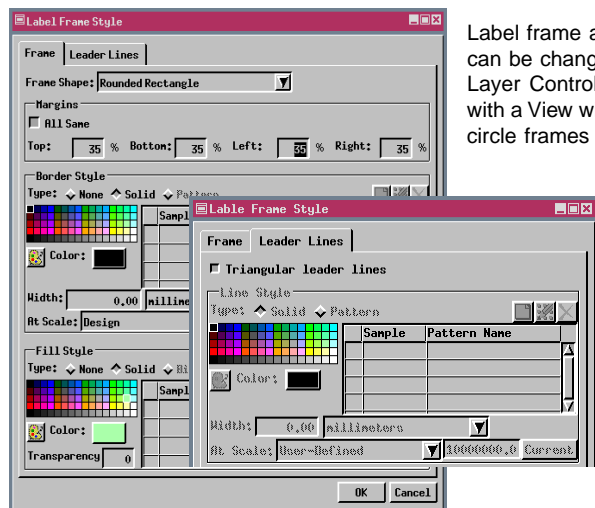
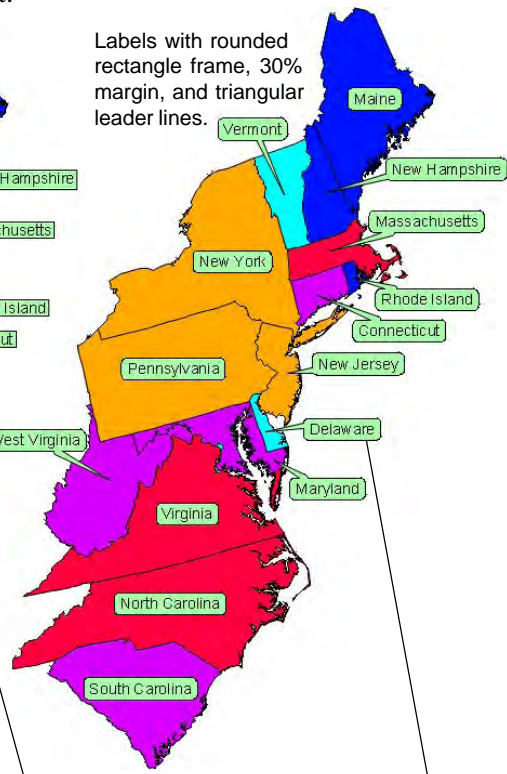
Enhanced text with leader lines where labels are outside polygons for population theme map.



Labels with rectangle frame, 15% margin, and solid leader lines.



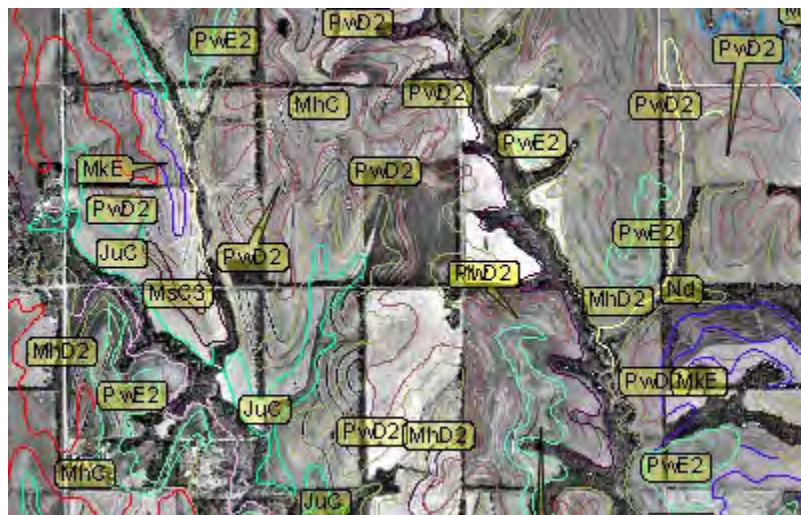
Labels with rounded rectangle frame, 30% margin, and triangular leader lines.



Label frame and leader styles can be changed from the Vector Layer Controls in any process with a View window. Ellipse and circle frames are also available.



Note that transparency is an option for frame fill styles. Partially transparent frames are particularly attractive over imagery.



The frame style for label elements is accessed from the Labels tabbed panel of the Vector Layer Controls window. Frame styles for on-the-fly labels are accessed from the corresponding element panel in the Vector Layer Controls window. Frame styles are not set up through the Auto Generate Label tool in the Spatial Data Editor. Your frame choice is a matter of personal preference and will likely vary from one data set to the next. Circular frames are best suited for labels with one or two letters or numbers.