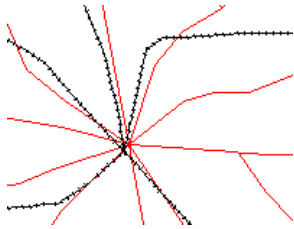
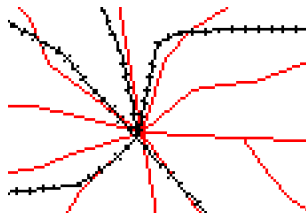


Antialiasing and Hinting of Thin Lines

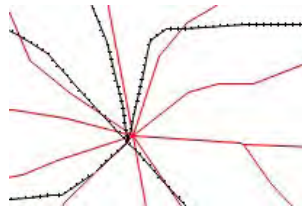
Aliasing is the stairstep effect in lines drawn digitally using a fixed, uniform color and intensity. Antialiasing removes or reduces the jagged effect. TNTmips accomplishes antialiasing using transparency to provide a smoother appearance for lines. Antialiasing is applied to any line that has a width of less than 1.5 pixels at the scale being drawn. The illustrations below were captured either from the View window or from a magnifier utility.



aliased View capture



aliased magnified



antialiased View capture

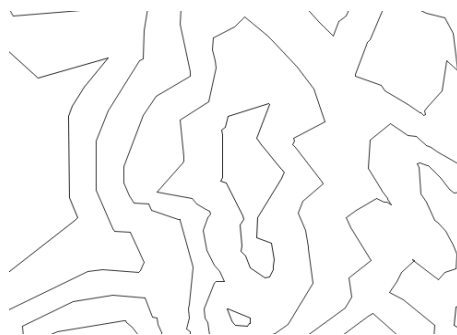


antialiased magnified

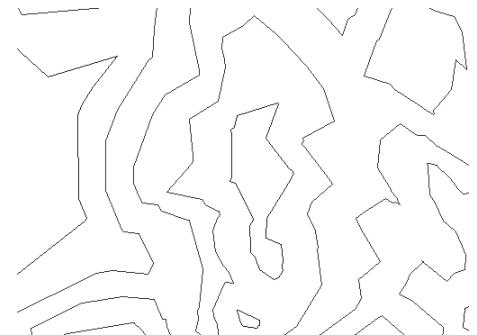
Hinting uses transparency to represent lines that would be less than one pixel at the current scale. Unlike antialiasing, which uses transparency to smooth the line where it would appear jagged, hinting applies to the line as a whole. The degree of transparency is proportional to how much less than one pixel the line width would be at the scale drawn. Hinting and antialiasing can be turned on and off independently for each View or for all newly opened Views.



hinting/antialiasing on, View capture



hinting off, antialiasing on, View capture



hinting/antialiasing off, View capture

