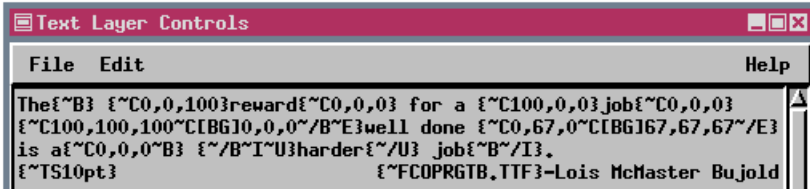


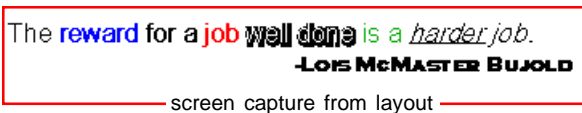
# WYSIWYG Text Editing



WYSIWYG (formatting codes off)



formatting codes on



screen capture from layout

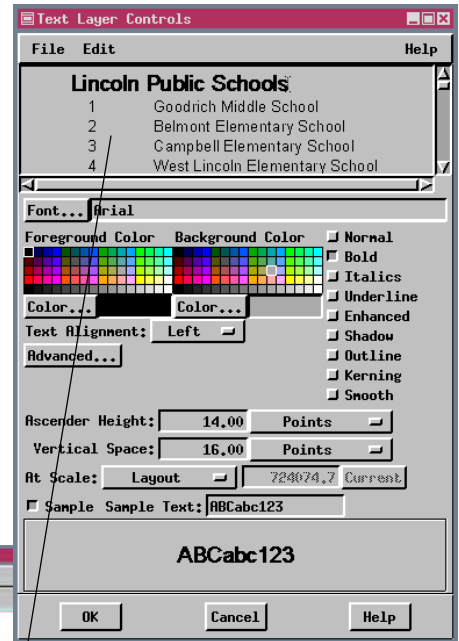
not mean you should. Style, font, and size changes should be kept to a minimum to maintain a professional map appearance. The WYSIWYG (What You See Is What You Get) text editor is available for text layers and multi-object legends in layouts. It is not available in places where the text does not become part of the layout, such as the Query Editor.

If your text contains style control codes (the method by which mixed styles in a single text block were previously achieved), the codes no longer show, and the text is displayed in the style specified by the code. You can still type in formatting codes to specify tab settings and superscript and subscript, for example, but the codes do not show the next time you return to the Text Layer Controls window. You can, however, right click in the text field or choose the Edit menu and use the toggle to specify whether formatting codes are shown. If you choose to view formatting codes, any assigned text styles or mixed font sizes are not shown, and the font used is your selected interface font. See the online reference manual for information on changing your interface font (Setup / Setup / Fonts).

The Text Layer Controls window now shows the text you enter in the size and style you set, and you can mix sizes and styles within an individual text block. Set the style and size desired for the majority of the text block, then type the text you want, highlight any text you want in a different size or style, and use the style

buttons and fields in the Text Layer Controls window to change it. This feature lets you place headings, which are generally larger and bold, in the same text layer as the body text. Just because you can change the style and font throughout the text block does

not mean you should. Style, font, and size changes should be kept to a minimum to maintain a professional map appearance. The WYSIWYG (What You See Is What You Get) text editor is available for text layers and multi-object legends in layouts. It is not available in places where the text does not become part of the layout, such as the Query Editor.



The Text Layer Controls window shows your text as it will appear in the layout without having to enter style formatting codes. Showing formatting codes is particularly useful if you have entered codes for features that lack a WYSIWYG component, such as tab stops.

