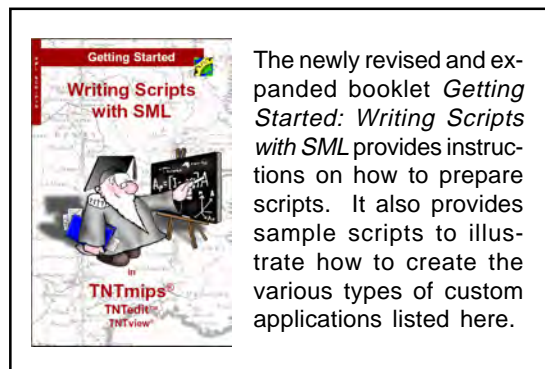


Be Creative with SML

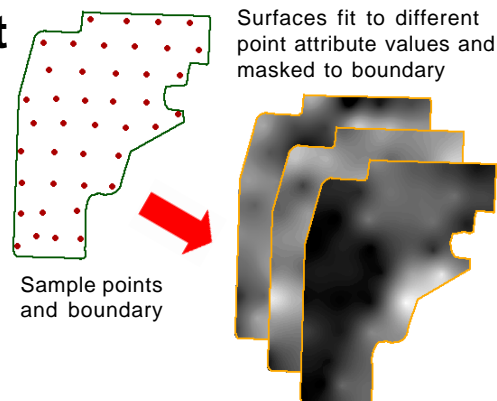
The Spatial Manipulation Language (SML) is the general purpose scripting language used throughout the TNT products. If you have written selection queries, you have already used basic elements of SML. But SML is also the means by which you can add custom, unique capabilities to your TNT products. Use SML to create your own unique features for the display, interaction, processing, and distribution of your geospatial materials.

You can create and use SML custom operations in TNTmips, TNTedit, or TNTview. Scripts prepared for use in these products can also be distributed and used in TNTatlas.



SML Process Script

Use the SML Process to create custom scripts to uniquely process your geospatial data. You can use an SML process script to apply an operation not found in the standard TNT processes, or to automate a sequence of steps involving standard processes or even additional external programs. SML process scripts can access and create data in TNT Project Files or in external file formats. They can also create dialog windows to allow interactive setting of program options and even views of the input or output data.



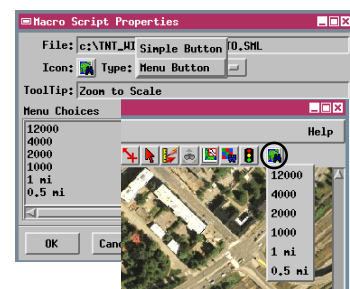
Raster statistics for drawn polygon

Tool Script

Use a Tool Script to provide a unique graphic tool to select data in a view window and apply custom processing. A tool script can provide a point, line, or polygon tool to designate the portion of the data to be processed. It can also create a dialog window to provide controls for the graphic tool, the process, or to show the results of the processing. Once a tool script is installed, its icon button automatically appears on the toolbar of all your TNT view windows. Tool script templates provide skeletal function definitions that you can fill in to define the exact operations you need.

Macro Script

Use a Macro Script to implement custom commands that operate on the geospatial data in a view window. A macro script can change the view of the data, operate on the data in the view, or start an external program and provide it with data from and about the layers in the view. Once a macro script is installed, its icon button appears on the toolbar of all your TNT view windows. Program options can be provided on a dropdown menu from the script's icon button.



Zoom to selected map scale



SML Layer Script

Use an SML script to create a separate layer in a spatial display. With the Add SML display option you can use an SML script to render a custom cartographic symbol such as a magnetic declination symbol.

APPLIDAT

You can use SML to create turnkey geospatial applications for users of TNTview or TNTmips. An APPLIDAT (APPLIcation plus DATA) bundles an SML script (or scripts) with the geospatial data to be processed. Data and script are loaded together automatically when each script is run, so no file navigation is required. Launch each component script from an icon button on the APPLIDAT's toolbar, which can also include a button for instructions. An instruction set is easy to create because you can use any editor that supports the HTML format.



Crop biomass mapping APPLIDAT