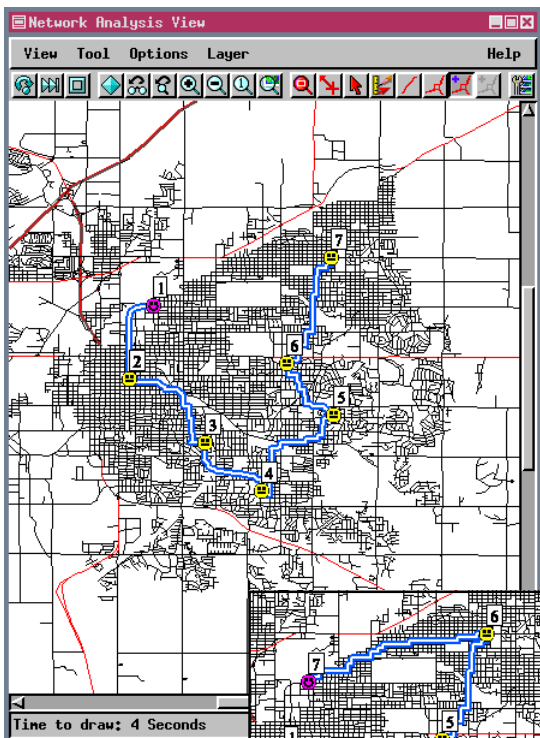
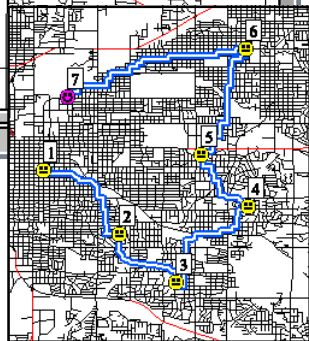


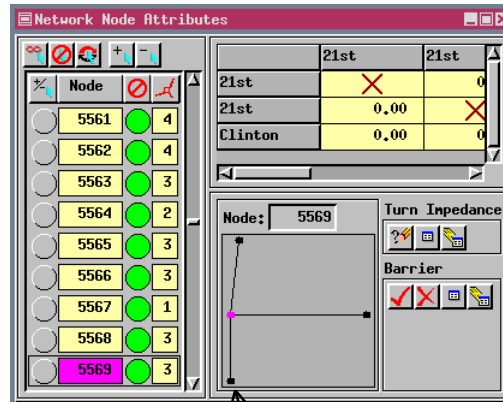
New Features in Network Analysis



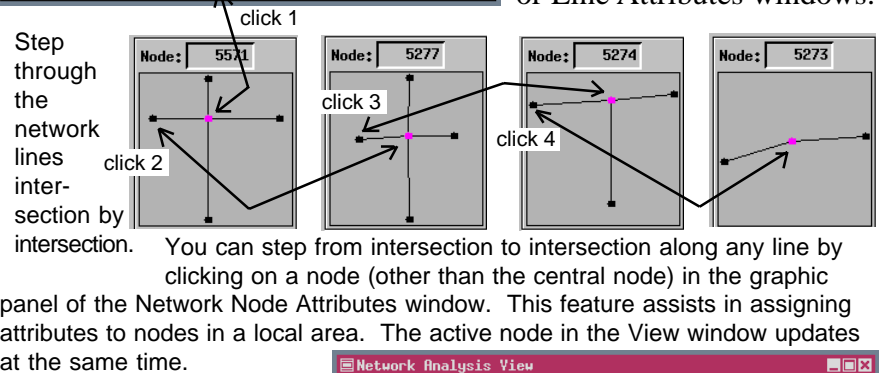
First stop changed to last stop (select first stop and click on Move Stop to End icon) and path recalculated.



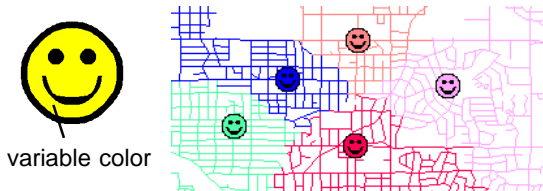
Many new features have been added to enhance the Network Analysis process first introduced in TNTmips 5.9. The majority of the features new for V6.00 are related to drawing styles, including labels that provide stop numbers and line patterns for network paths. Drawing styles are set up in the Network Analysis Preferences window.



Another important new feature is the ability to step through the network by clicking on a peripheral node in the graphic area of the Network Node Attributes window. You can also pan the view to the active node or line by right-clicking on its entry in the Network Node or Line Attributes windows.



Centers and stops can be represented by a box, circle, crosshair, or point symbol. Point symbols used to represent centers should contain a significant variable color component in order to match the lines assigned to the center.



The red circle indicates a prime area for locating a new Oriental restaurant.

In Allocation mode, you enter the location of centers, then the Network Analysis process identifies the linear components of the network that should feed that center (Allocate In) or that the center should service (Allocate Out). Here, each center represents an existing Oriental restaurant. An impedance limit of 2 km was set to determine the local area for each restaurant in hope of identifying an under-served area. A large, central under-served area is easily identifiable after running the process (Allocate In).

