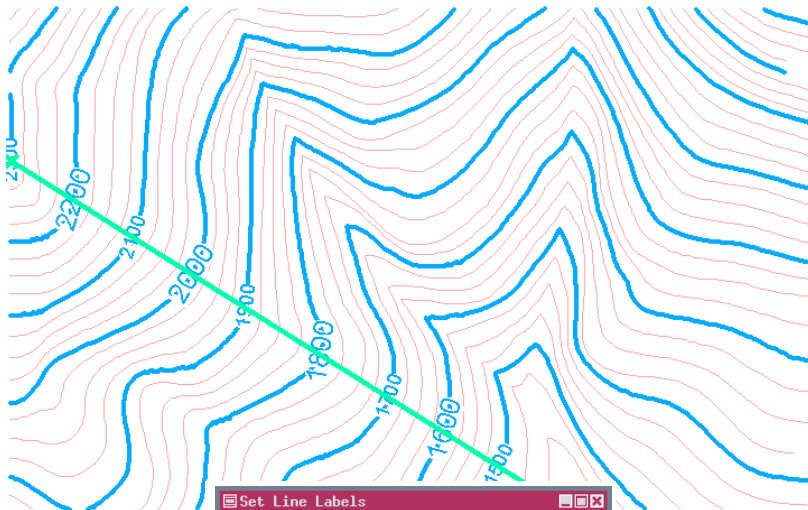
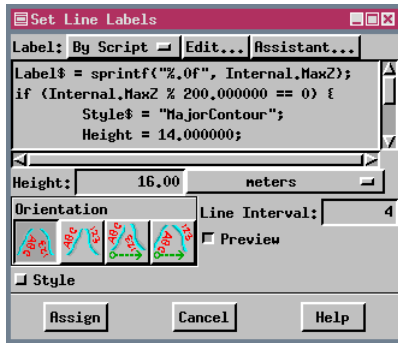


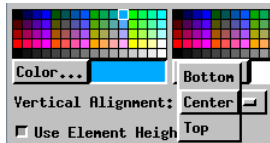
Setting Line Labels Interactively



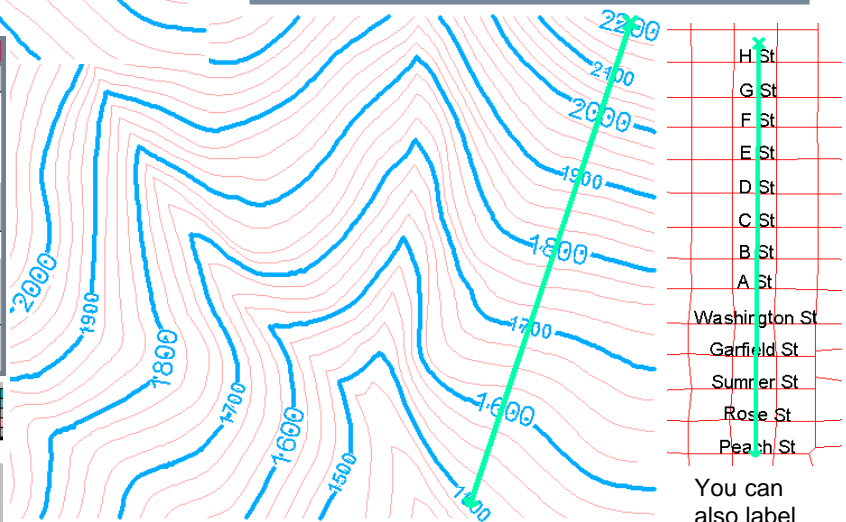
This query sets label styles (size, color, and position) for contour lines. Styles vary such that large labels appear on contours with z-values evenly divisible by 200.



The position of the label relative to the line is set as part of the label style.



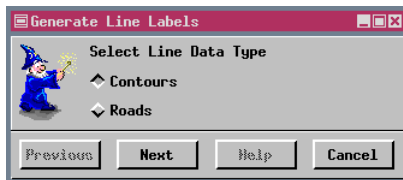
A new tool has been incorporated into the Spatial Data Editor to place labels on lines that intersect the segment you draw for label positioning. You can designate the orientation of the label relative to the tool or the object and also indicate whether it should be above, below, or centered on the line. There is even an “assistant” to help you write your label style query.



You can also label streets.

Let the Wizard Write Your Script

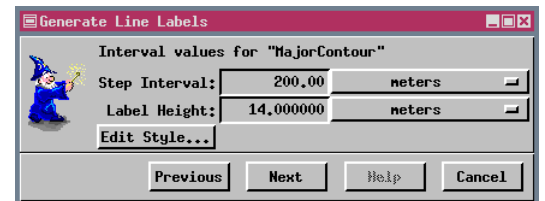
Even simple labels may require some script writing knowledge. For example, the z-values on contour lines shown above are not simply an attribute value—the value has been truncated to remove the decimal point and the four places to the right that are found in Internal.MaxZ. There is also the matter of alternating label size. The Label Assistant leads you through a number of windows that let you specify what the labels should include and how they should appear. Additional choices depend on the type of line (contours or roads) you specify.



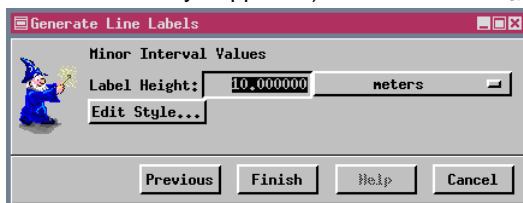
① Choose the type of line you want to label (only contours and roads are currently supported).



② For contours, set the number of Interval Groups, which is the same as the number of different label styles you want; the number of decimal places to be shown in the contour value; and the number of lines between labels.



③ Set the Step Interval, which is the elevation change for a set of interval groups. Specify the label height in object coordinates. Also click on [Edit Style...] to set the font, color, and alignment, which is used for all labels unless changed in a subsequent window.



④ Specify the label height for the minor interval and change the style if desired. The settings in the steps on this page produce the contour labels shown.