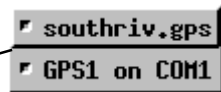
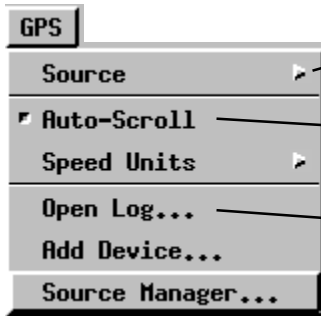


GPS Support in Geospatial Display

GPS capabilities are available in all of TNT's standard display windows. A GPS menu in the View window lets you select GPS sources and configure GPS symbols. You can select one or more GPS units and log files for coordinate inputs. You can choose any number of tracking symbols to show moving and stationary input.

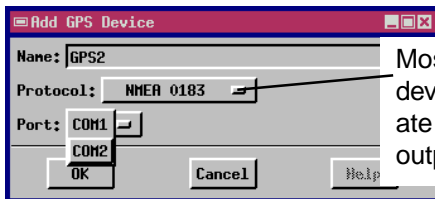


The GPS menu's **Source** selection lets you toggle on and off the display of the symbol for each active GPS source.

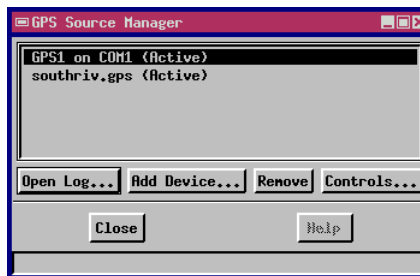
The **Auto-Scroll** toggle tells the display process to scroll in the direction of the moving GPS source and re-center the view when the source moves off the edge.

The **Open Log** selection opens the file / object selection window so you can select a log file. Your GPS device can create a log file (*.gps) from saved coordinates, or you can create a log file with a text editor or spreadsheet.

The **Add Device** selection opens the Add GPS Device window so you can select a GPS source.

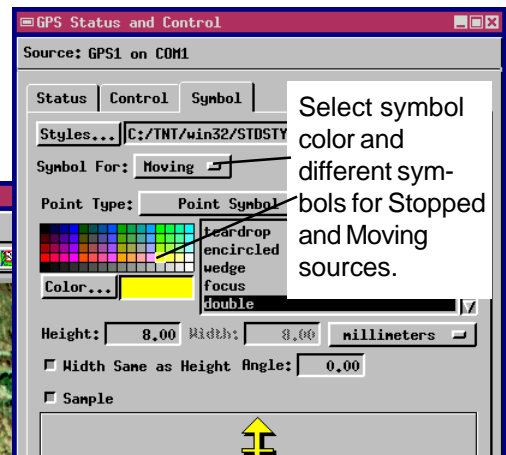


Most GPS devices generate an NMEA output stream.



The **Source Manager** selection opens the GPS Source Manager window for adding and removing GPS sources and log files. The Controls button opens the **GPS Status and Control** window.

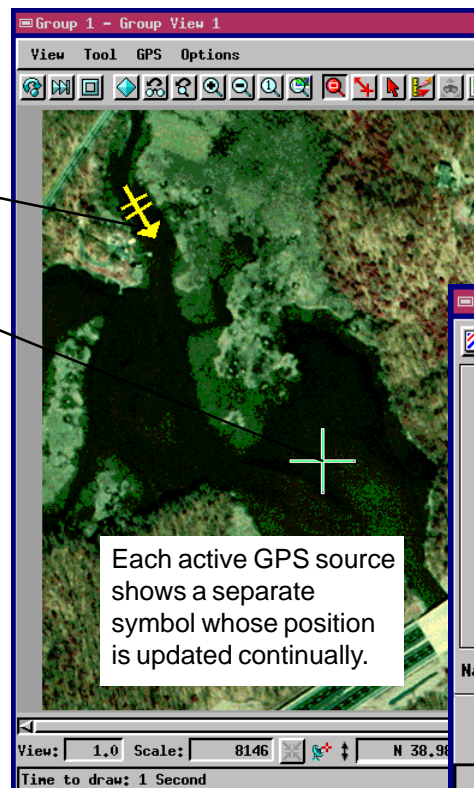
The **Status** tab in the **GPS Status and Control** window shows all current readings for the selected GPS device. The **Control** tab lets you record and play log files. The **Symbol** tab lets you change the symbols, colors, and sizes for moving and stationary GPS sources.



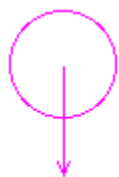
Select symbol color and different symbols for Stopped and Moving sources.

Select a position symbol to represent a **moving GPS source**. The heading reported by the GPS device determines the direction that the symbol points.

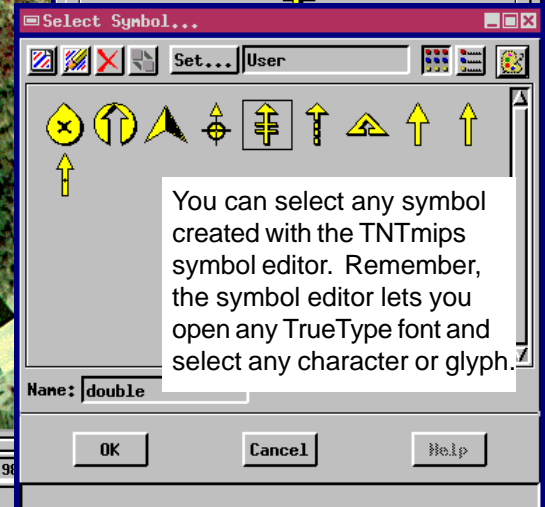
Select a different position symbol to represent a **stationary GPS source**. The symbol on the display automatically changes from Stopped to Moving when the state of the GPS device changes.



Each active GPS source shows a separate symbol whose position is updated continually.



If the GPS device reports a position beyond the extents of the project material, this GPS symbol points in the direction of the GPS location.



You can select any symbol created with the TNTmips symbol editor. Remember, the symbol editor lets you open any TrueType font and select any character or glyph.