

# Google GIS Mashups



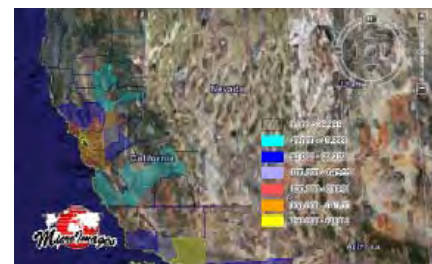
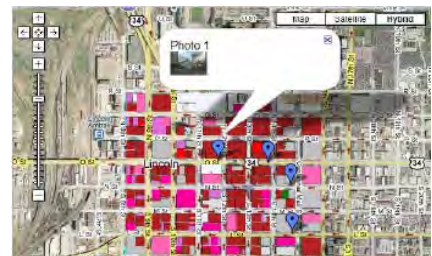
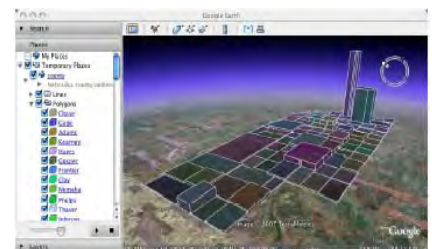
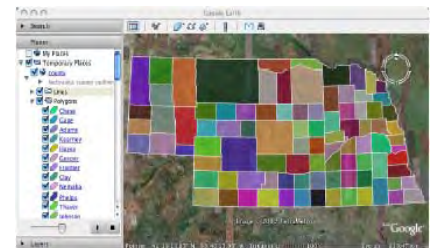
The TNT products provide a variety of tools to create a KML or KMZ file from your geodata for use in Google Earth, Google Maps, Virtual Earth and other software with KML support. You can choose either to render the currently viewed portions of your geodata in your groups or layouts or to export your geospatial elements to KML or KMZ files. You can also save your geotagged photos as KML files and display your photos with their locations in Google Earth.



TNT Map Layout rendered in Google Earth

## Google GIS Mashup Highlights:

- Create KML or KMZ file from the geometric, raster, map grid, and/or pinmap layers in your groups or map layouts
- Render the layers in groups/layouts either for the inclusive extents of all layers used in the view or for the extents of any open 2D or 3D view window
- Create a KML or KMZ file from the WMS and/or ArcIMS layers in your groups or map layouts
- Control the format, resolution, and quality of the images rendered for the KML file
- Extrude your 2D geometric object elements into virtual solid objects extending above the surface in Google Earth
- Control the cell size of the rasters and coordinate accuracy of the geometric objects rendered to KML
- Automatically set the cell size of raster images from the raster object that has been added to the view and has the smallest cell size
- Match the coordinate accuracy of the geometric objects automatically to the cell size of the raster objects
- Render non-georeferenced graphics in groups or layouts as screen overlay layers (e.g., logos, legends, scale bars, and other fixed-in-view elements)
- Display your point elements in Google Earth with the same symbols used in the TNT products.
- Retain the visibility settings of all groups and the layers in those groups from the TNTmips Display process
- Create a KML file from a geotagged image database and display your photos as image thumbnails in Google Earth
- Control each rendered group and layer in that group as individual Temporary Layers in Google Earth



[Technical Guides on Render to KML](#)

[Technical Guides on Export to KML](#)