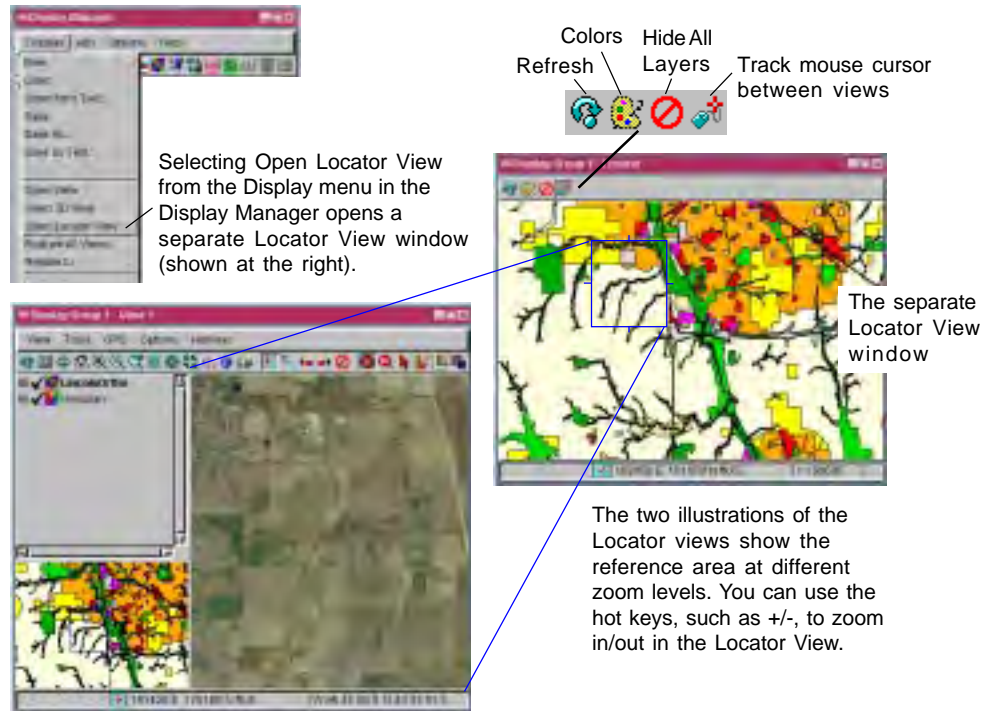


Open a Separate Locator View

DID YOU KNOW . . . you can open a separate Locator View along with the one attached to the Legend in the View window?

What Opening a Separate Locator View Gives You

- A separate reference view with a box showing the extents of the current view
- Ability to resize and reposition the area viewed with the mouse
- Use hotkeys to zoom in/out in the Locator View
- Control layer visibility for the Locator View



Toggleing on the Show Locator button on the Options menu of the View window opens the Locator at the bottom of the Legend as shown above.

How to Open a Separate Locator View

- Display any group or layout in the Display or the Editor process.
- In the Display Manager, select Open Locator View from the Display menu.

WANT TO KNOW MORE?

See the Technical Guide entitled: Spatial Display:

Locator Reference View Manages Zoom and Position

