

Toggle Redraw from Manual to Automatic

DID YOU KNOW . . . if you are viewing only a few layers, reordering layers, and performing similar fast redraw operations, you can toggle from manual redraw to redraw after any change?

What Toggling Redraw from Manual to Automatic Gives You

- Refresh view automatically after any change
- No need to press Redraw icon every time you want the view to refresh
- Change default redraw behavior to automatic instantly if it is set to manual

Click on the *Redraw after any change* icon to switch from Manual to Auto Redraw mode.

Manual redraw mode



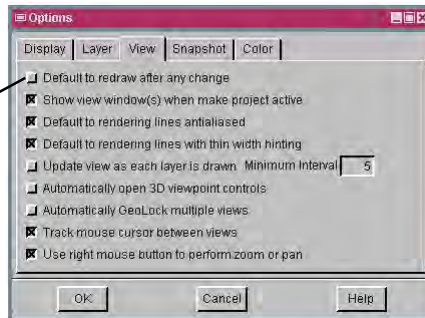
The *Redraw after any change* icon toggles your default refresh selection for that view to the opposite choice for as long as that view is open and used.

Automatic redraw mode



The Redraw icon updates view canvas on demand. It is not necessary when the *Redraw after any change* icon is toggled on.

When this button is toggled off, the *Redraw after any change* icon is not pressed for each new view and you need to click the Redraw icon when you want to refresh the view.



The Options window opens when you select Options/View Options from the Display Manager menubar.

How to Toggle Redraw from Manual to Automatic

For the current view:

- Click the Redraw after any change icon on.

For subsequent views:

- Select Options/View Options from the Display Manager menu; or select Setup/Preferences from the Editor-Layer Manager menu.
- Click on the View tab in the window that opens.
- Toggle off the Default to redraw after any change button for manual redraw mode.
- Press the Redraw after any change icon in the View window to toggle back to automatic redraw mode if you are performing fast redraw operations.

WANT TO KNOW MORE?

See the Technical Guide entitled:

View Toolbar Features

