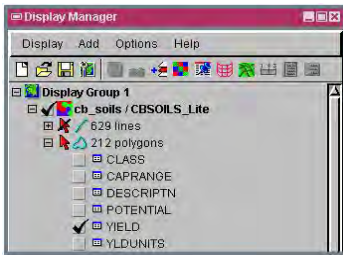


# Rearrange Fields for Tabular Viewing

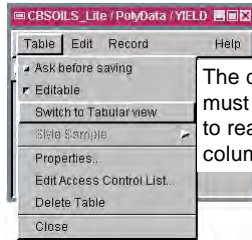
**DID YOU KNOW . . .** you can rearrange fields (table columns) using the drag-and-drop feature in tabular view?

## What Rearranging Fields for Tabular Viewing Gives You

- Easy reorganization of fields
- Move fields in either direction
- Drag-and-drop reordering of the fields

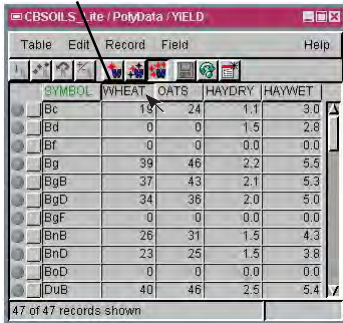


Click on the checkbox to open the database table viewer.

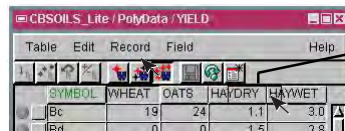


The database table must be in tabular view to rearrange table columns.

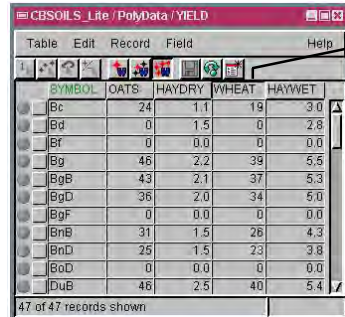
### Column heading



Click, hold, and drag field name (column heading) in desired direction when in tabular view.



The heading outline was dragged to the right.



The column heading was dropped at the right.

## How to Rearrange Fields for Tabular Viewing

- Expand database tables for the desired element type.
- Click on a database table checkbox to open the database table.
- Click and hold on the column heading.
- Drag the heading outline to the left or right.
- Release the mouse when the box is in the desired location.

**WANT TO KNOW MORE?**

See the tutorial booklet entitled:

**Managing Geoattributes**

