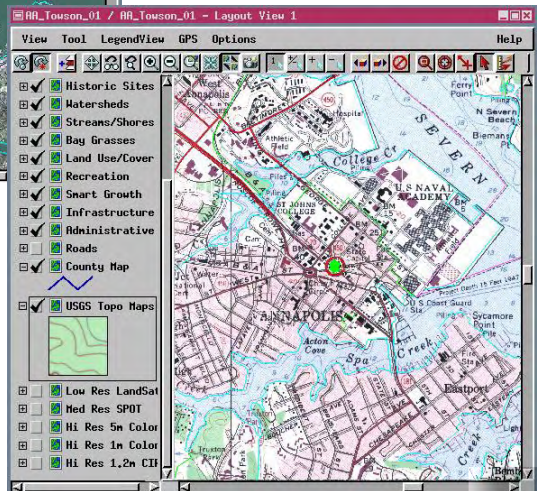
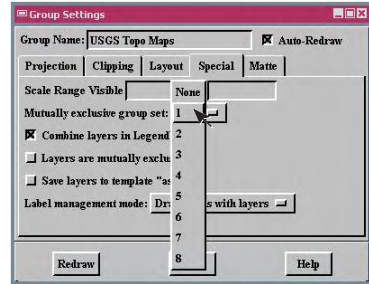
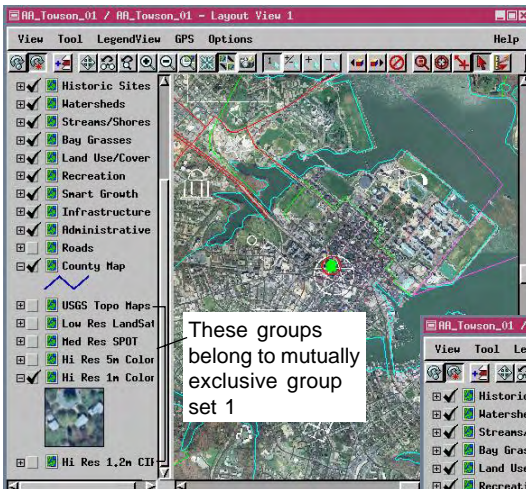


Mutually Exclusive Groups

DID YOU KNOW . . . you can make display of groups within a layout mutually exclusive?

What Mutually Exclusive Groups Give You

- Defined sets of groups that are mutually exclusive
- Ability to switch between groups without hiding/unhiding or changing drawing order



You can create up to 8 mutually exclusive group sets. All groups that belong to the same group set have mutually exclusive display—you turn one on, it turns the others off. In this example, the 6 base image raster groups have been made mutually exclusive.

How to Get Mutually Exclusive Groups

- Click on the *Settings* icon for any group you want to add to a mutually exclusive set.
- Click on the *Special* tab and choose the desired mutually exclusive group set number from the option menu.
- Repeat for each group you want in a mutually exclusive set.

WANT TO KNOW MORE?

See the tutorial booklet entitled:

Designing Electronic Atlases

