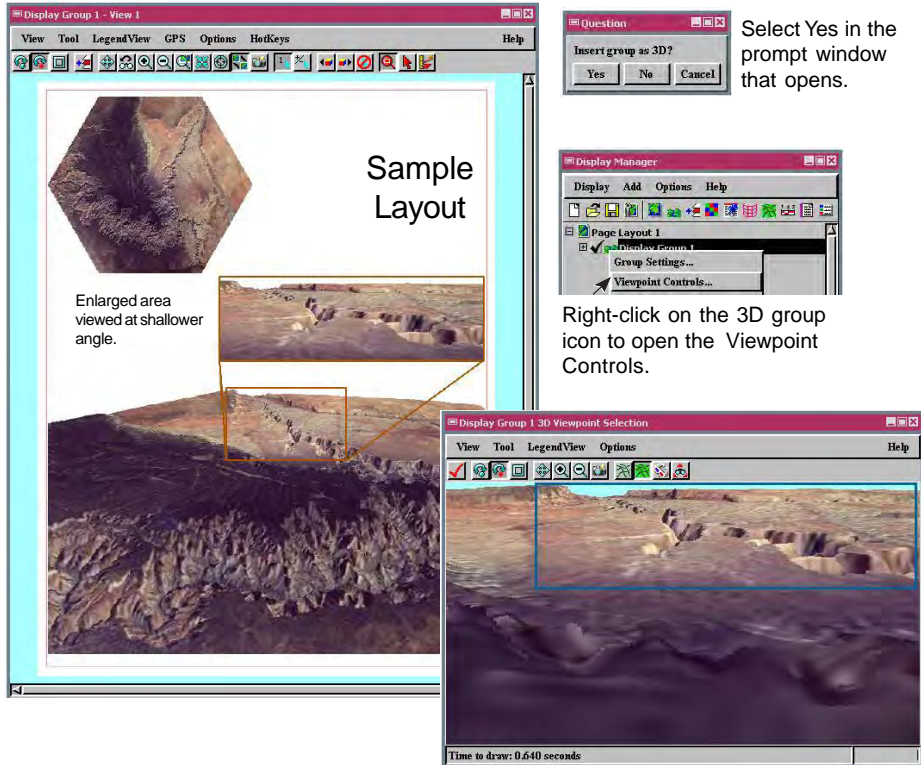


Incorporate 3D in Your Posters

DID YOU KNOW . . . you can add a 3D group to any layout?

What Adding 3D to Posters Gives You

- Add visual stimulus to your posters
- Show the same area from a variety of angles and elevations
- Familiarize viewer with area's topography



How to Add 3D Groups to Your Poster Layouts

- Choose Add/Saved Group from the menu in the Display Manager window.
- Open the Viewpoint Controls for the 3D group and adjust if necessary.
- Click and hold the left mouse button to draw a box in the 3D Viewpoint Selection window around the area you want shown in the layout, then click on the Apply Changes icon in the same window or Apply button in the 3D Viewpoint Controls window
- In layout display mode, you can also add a new 3D group, select the surface and drape layers, set the Viewpoint Controls, and select the desired area.

WANT TO KNOW MORE?

See the tutorial booklet:

3D Perspective Visualization

