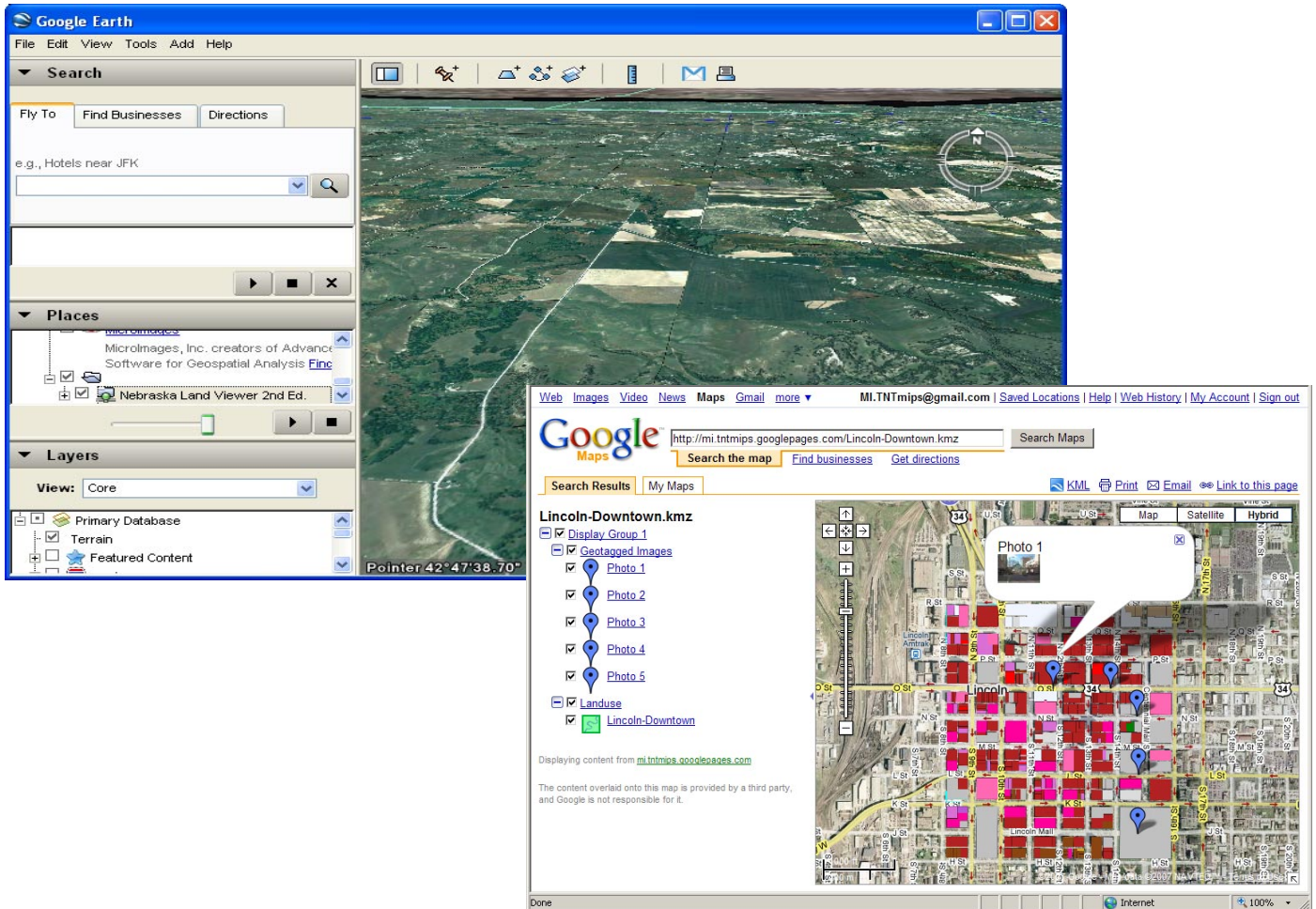


MicrolImages Press Release



Use Your Geodata in Google Earth and Maps

Use TNTmips to create ready-to-use standard Google Maps and Earth tilesets or KML files. Publish your tilesets using an HTML page and anyone can use them in Google Maps via their browser. Tilesets can be assembled directly from many different formats and coordinate reference systems using the TNTmips mosaic process. Or, directly import, export, snapshot a view, or render a layout from geodata in your geodata format into KML and KMZ files including images, photos, graphics, and styles. Support is also included to create OSGeo tilesets for use in Open Layers. For detailed descriptions of these new TNTmips features see the illustrated TechGuides at www.microimages.com/press/google.htm or contact info@microimages.com.

Contact: MicroImages, Inc. • 11th Floor–Sharp Tower • 206 South 13th Street • Lincoln, Nebraska, 68508-2010 USA
• Voice (402)477-9554 • FAX (402)477-9559 • email info@microimages.com • Internet www.microimages.com

MicroImages' trademarked line of products includes TNTmips[®], the Map and Image Processing System; TNTedit[™], for visualization and editing; TNTview[®], for visualization and interpretation; TNTatlas[®], for wide scale publication of electronic atlases; and TNTsdk[®], for development of custom modules for TNTmips. TNTserver[™] and TNTmap[™] work together to provide access to atlases over an intranet or the Internet. TNTlite[®] is a free, full-featured version of TNTmips limited only by the size of project materials and the restriction of project materials created to use in the TNT products.