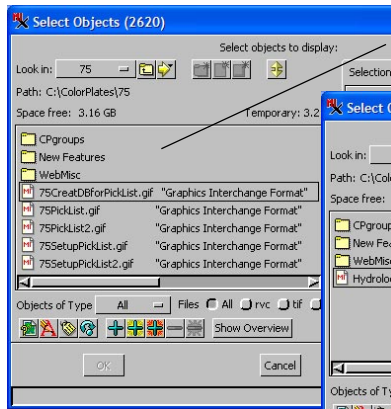


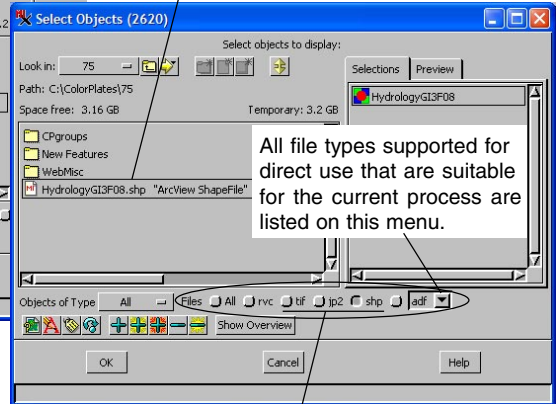
System

File Type Selection Options

The TNT products support many external file types for direct use in visualization and processing. You can designate what file types are shown to you during any object selection process. Your most recently used file types that are appropriate for selection in the current process appear as toggle buttons. All file types supported for direct use in the current process are listed on the menu to the right of the toggle buttons. There are 44 entries on this list in the Display process after you have elected to add any object type, but if you are extracting from a geometric object, there are just six options on the input object file type menu. You can also restrict the files viewed to TNT Project Files (*.rvc) only.



This folder contains many files, but only one shapefile. Changing visible files to those with a .shp extension greatly simplifies its selection.



These choices reflect your most recently used file types if they are suitable for the current process.

