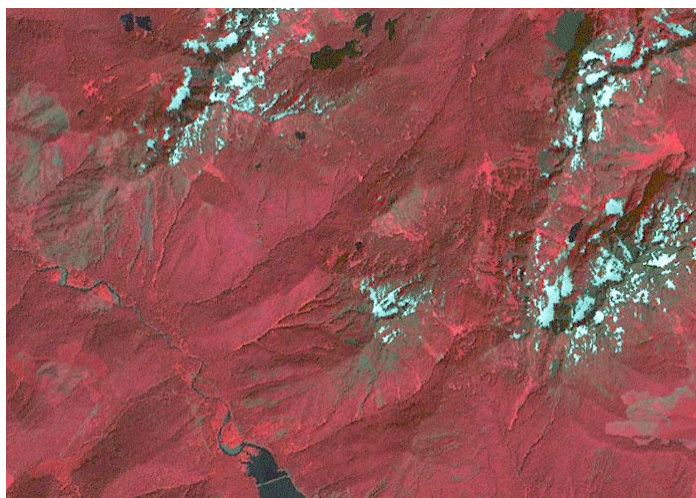
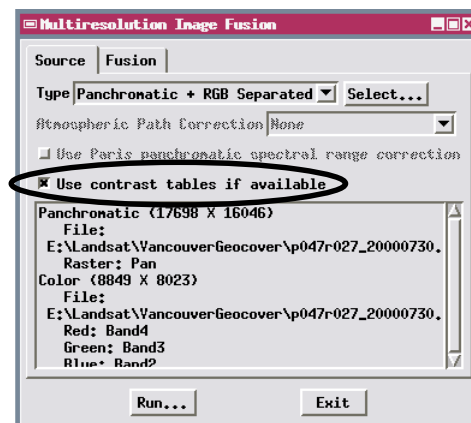


Multiresolution Fusion

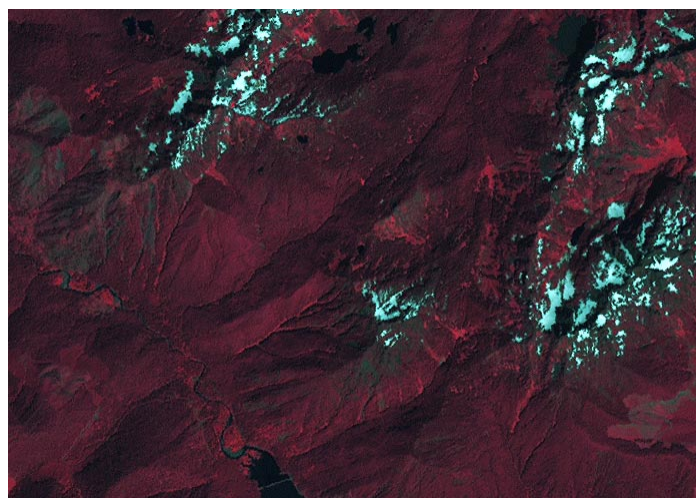
Use Contrast Tables in Image Fusion

The TNTmips Multiresolution Fusion process (Raster / Combine / Multiresolution Fusion) allows you to automatically use contrast tables previously saved for any source grayscale images to provide contrast-enhanced image values to the pan-sharpening operation. The fusion process can thus take advantage of any linear, normalized, exponential, logarithmic, or user-defined contrast settings you have already set up for the source raster objects in the Display process.

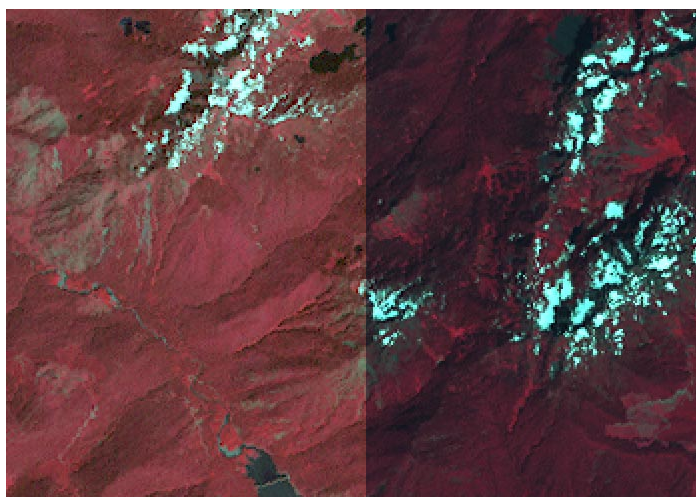
When you turn on the *Use contrast tables if available* toggle on the Source tabbed panel, the process uses the last-used contrast table (if any) for the source panchromatic image and for separate RGB multispectral source rasters. This option is most useful when you choose the Panchromatic + RGB Separated or the Unspecified source type, as the special calibration processing applied for the Quickbird or IKONOS source types provides good color balance, brightness, and contrast in the fusion product directly from the raw image values. Using contrast enhancement is advantageous when pan-sharpening Landsat 7 or SPOT images, or when mixing panchromatic and multispectral source images from different sensors. If you use the panchromatic contrast enhancement option on the Fusion panel, this manual enhancement is applied in addition to any contrast enhancement applied from a saved contrast table.



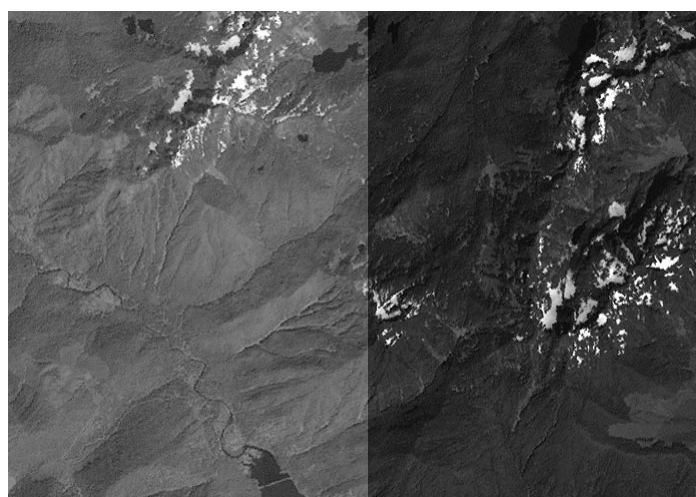
Color fusion result from Landsat 7 image data shown below using exponential contrast tables for the color and panchromatic bands.



Color fusion result from the same Landsat 7 image data but without using the available contrast tables or the manual contrast enhancement for the panchromatic band.



Source Landsat 7 color bands (4, 3, 2 = R, G, B) with exponential contrast (left side) and no contrast enhancement (right side).



Source Landsat 7 panchromatic band with exponential contrast (left side) and no contrast enhancement (right side).