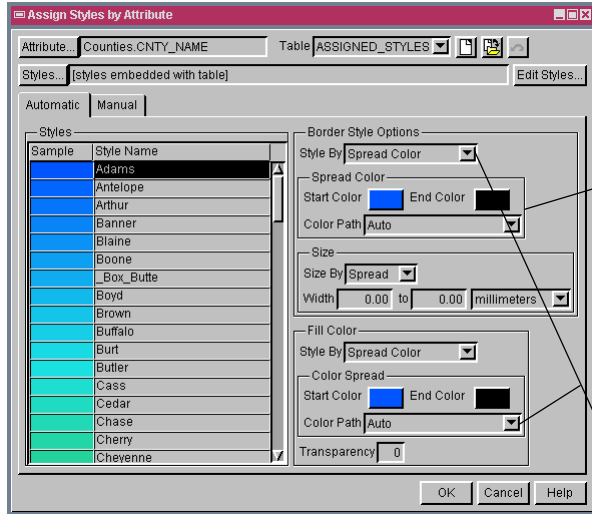


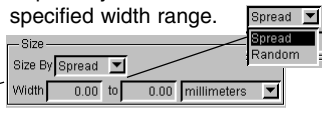
# Spatial Display

## Automatic Style Assignment Options

The Automatic Style Assignment in the TNT products provides a variety of options to automatically assign predefined symbols for points, solid colors for lines, and fill and border styles for polygons. These options lets you control the automatic assignment of color and width to the element styles. If you accept the default settings on the Automatic tabbed panel, the selected elements are displayed in an incremental color spread with default colors and all lines, polygon borders and/or point symbols with the same width. The default start and end colors for the color spread can be easily changed using the standard Color Editor. You can change the automatic style assignment default settings using the Style By and Size By menus.



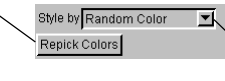
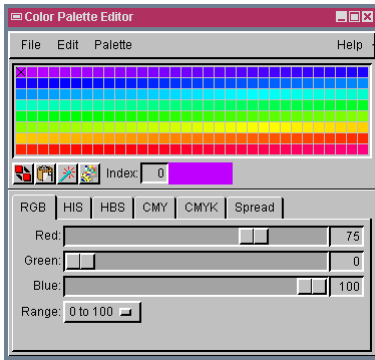
Select to apply random or incremental size spread to line styles, polygon borders or point symbols within a specified width range.



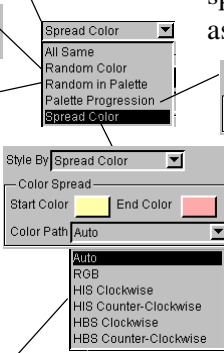
These two menus have the same content for styling all element types (when applicable). Selecting an option from the Style By menu lets you use the standard Color Editor to assign the same color to all styles, specify a color palette to automatically pick the colors from, or define start and end colors for a color spread using different color paths. You have 5 options to choose from this menu for color assignment: All Same, Random Color, Random in Palette, Palette Progression and Spread Color. Each option provides its own panel. The Size By menu lets you specify a width range for size spread. You also have the option for random size assignment within a desired width range.

Colors are picked randomly by the process when this option is selected. You can click on the Repick button for new set of randomly set of colors for all attributes.

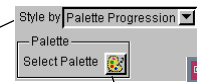
Colors are picked randomly by the process when this option is selected. You can click on the Repick button for new set of randomly set of colors for all attributes.



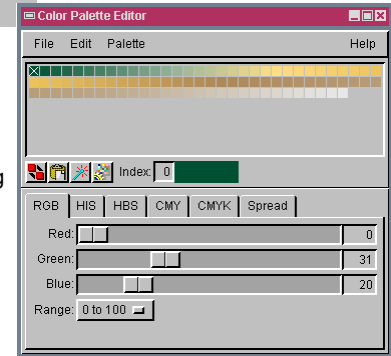
Click to assign a new set of colors from the selected color palette.



The Color Path menu allows you to choose colors from RGB or HIS color models or let the process assign colors for the spread.



Click to open the standard color editor for specifying color spread range.



Colors are randomly picked from the color palette selected in the Color Palette Editor that provides options to directly use or customize standard color palettes. The illustration below shows randomly picked colors using the standard color palette Rainbow 1 (illustrated above).

Colors are selected in order from the color palette specified in the Color Palette Editor according to the number of the attributes. The illustration below shows the 92 counties of Nebraska styled by the first 92 colors of the standard color palette Earth Tones (illustrated above).

