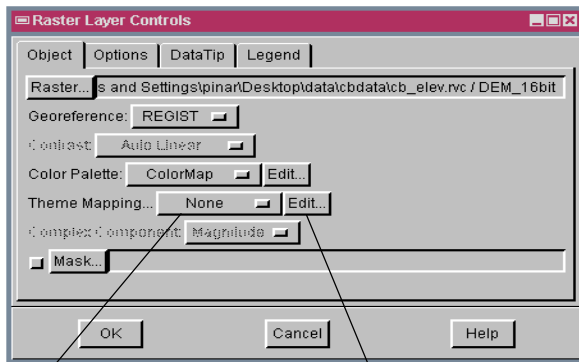


## Spatial Display

# Theme Mapping a Raster

The Raster Theme Mapping feature in the TNTmips Display process automatically generates interval categories from the cell values of raster objects and assigns a range of colors to the interval categories generated. Your raster's cell values are allocated into 6 equal interval categories by default. You can either accept the default intervals generated or change the number of the interval categories and distribution type for your theme mapping needs. Once you decide the number of interval categories in your theme, the raster cell values are automatically distributed into these categories in equal ranges or counts based on your selection. Alternatively you can manually define upper and lower values for each category and have the cell values automatically assigned to these manually defined categories. You can manually assign a color to each category or use a color spread for automatic style assignment. The raster interval categories associated with each color can be displayed onscreen by LegendView or added as a legend into your map layouts.



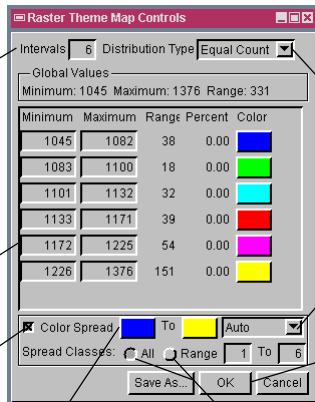
Select a raster theme from the list to display or edit.



Click to create a new theme or edit an existing one via the Raster Theme Map Controls window.

You can create your raster theme by opening the Raster Theme Map Controls window or the Raster Layer Controls. The Raster Theme Map Controls window includes a panel that shows the allocation of cell values to each interval category along with the range and percent of the cell values in these categories. You can use this panel to customize the ranges by editing the minimum or maximum values. The adjacent ranges are automatically adjusted in response to your changes. The colors associated with each interval category are also shown on this panel as color buttons. You can edit the color for any interval by selecting its color button to open the standard TNTmips Color Editor window. When you are done with designing your raster interval categories, you can save the theme as a new raster subobject. The themes saved as raster subobjects are listed in the Raster Layer Controls window for display and further editing.

Enter a value to set the number of intervals.

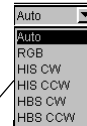
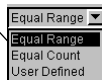


This panel is automatically updated when you manually edit the ranges or change interval and/or distribution type parameters.

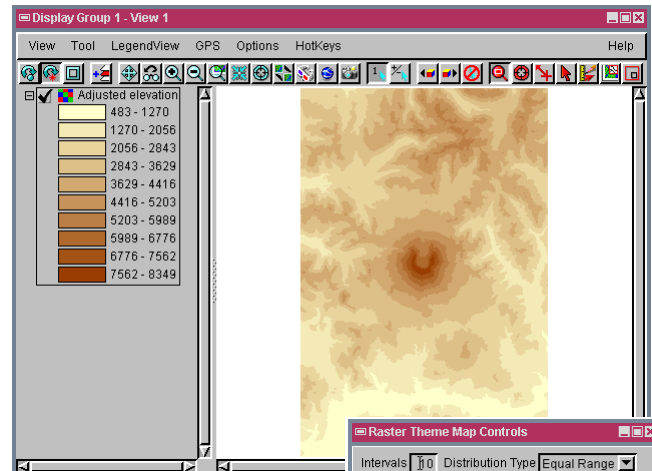
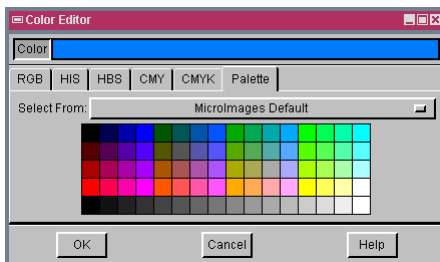
Toggle on this button to automatically assign colors using the color spread.

Press any color button to open the standard TNTmips Color Editor window.

Assign color spread to all or selected interval categories.



Click on the OK button to create a new raster theme or save your changes to the selected raster theme.



The illustration above shows a raster theme map that breaks the elevation values into 10 categories. The interval categories are displayed in an incremental RGB color spread from light yellow (lowest elevation) to dark brown (highest elevation) as defined in the Raster Theme Map Controls window to the right.

