

Try this new feature in 2008:74

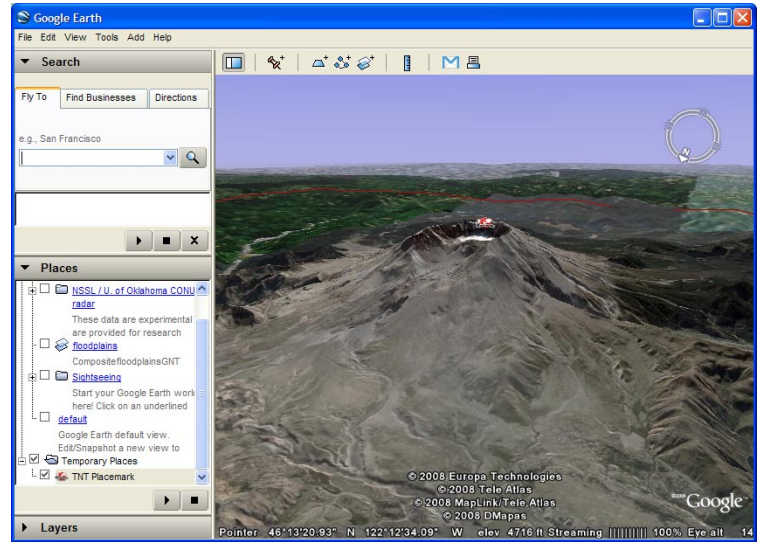
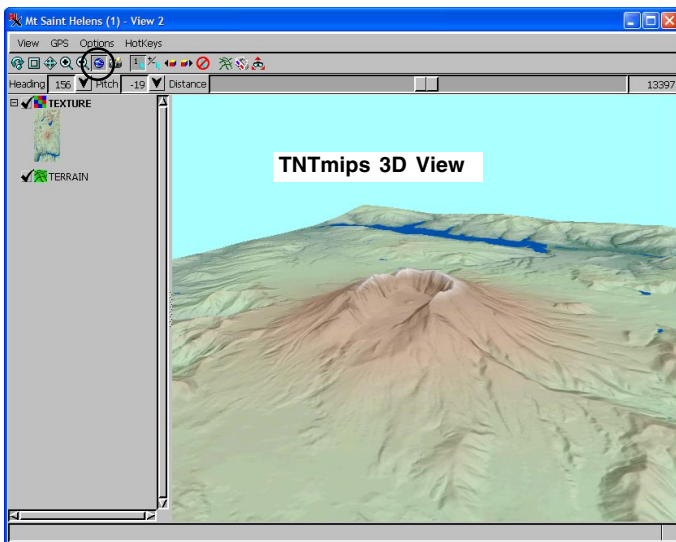
Spatial Display

Sync Google Earth with 2D and 3D Views



The Zoom Google Earth to Match View icon not only opens Google Earth zoomed up to the location of your current view, but repositions and zooms your Google Earth view to match changes in your TNT view. The view synchronization continues until you turn the icon button off by clicking on it again. The icon is present in both 2D and 3D views. When you open Google Earth using this method, a TNT Placemark symbol is positioned in Google Earth at the center of your current TNT view.

When Google Earth is launched from a 3D view, the elevation and orientation are also maintained. Changes in zoom level or position in TNT 2D views are reflected in Google Earth as soon as they are made. TNT 3D views are only updated when the solid view is redrawn—adjustments to the wireframe view do not update in Google Earth. If you have not turned off prompting in Google Earth, you will be asked if you want to reload the tnt.kml file.



Rotate and zoom in TNT.

Your movements in TNT are reflected in Google Earth.

