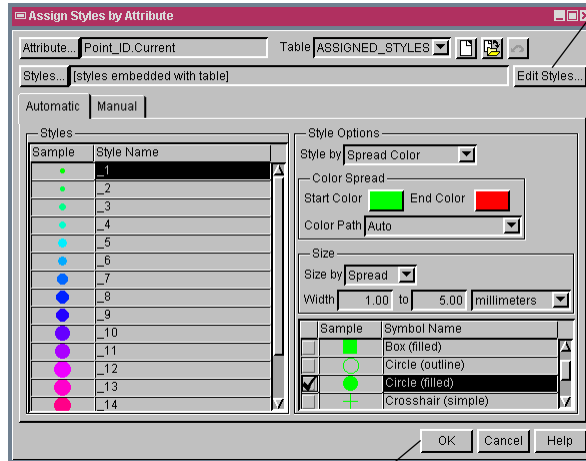


## Spatial Display

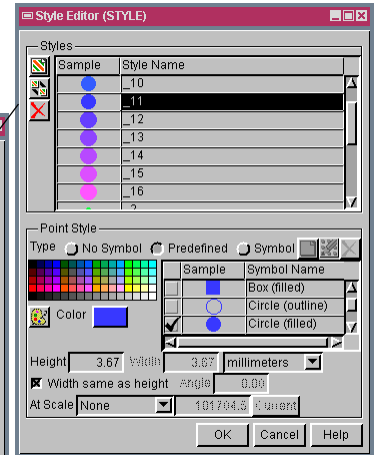
# Automatic Style Assignment to Attributes

The Automatic Style Assignment in the TNT products automatically creates and assigns a drawing style to each attribute value attached to the internal or linked geometric object elements. The automatically created styles are composed of predefined symbols for points and solid colors for lines and polygon fills. During this automatic style assignment process, random colors can be picked for your attribute values or you can define a color palette from which the random colors would be picked. Alternatively you can define colors to apply color spreads for all element types. You can also enter a width range to apply size spreads to point symbols, line elements and polygon borders. You can individually edit the styles once they are automatically assigned to the corresponding attributes.

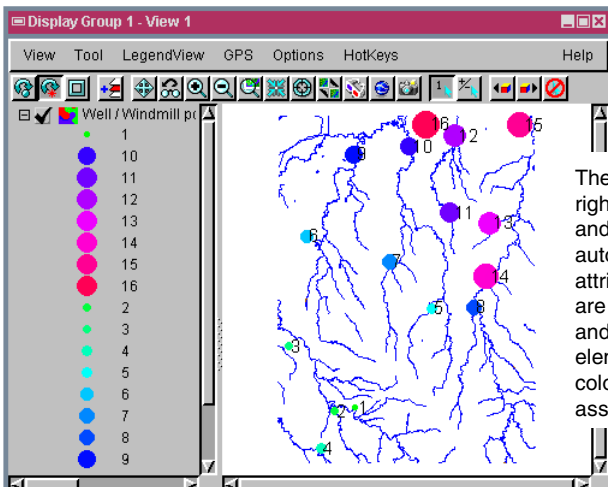
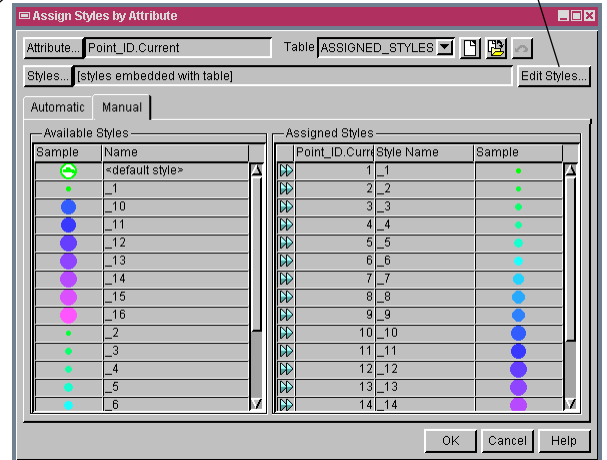
You can use automatic style assignment by opening the Style by Attribute window for any element type in the Object Layer Controls window. The Automatic tabbed panel opens by default when you select your attribute table and a field to style your elements by attribute, the sample drawing style for each attribute is automatically listed along with a name the same as the corresponding attribute values. The Automatic tabbed panel provides you a variety of options to set size, color, transparency and scale information of styles. The color and size options let you choose random assignment of styles to your attributes or have control over your styles using size and color spreads. The automatically created styles are saved in your style object. You can use the standard Style Editor to access and edit each style definition. You can reassign each created styles to a different attribute using the Manually tabbed panel. Each time you use the automatic style assignment for the same attribute values the previously created drawing style set is replaced with the new set of styles.



When you click on the OK button, the styles are automatically assigned to the attributes as shown in the illustration to the right. You can reassign any styles to a value using the Manually panel.



The Edit Styles button opens the standard Style Editor (illustration above) to create new styles or edit the existing styles including the automatically created ones.



The illustrations to the left and right show the point elements and polygon elements that are automatically styled by attribute. The point elements are assigned styles using color and size spread and polygon elements by using random colors from a color palette and assigning 50% transparency.

