

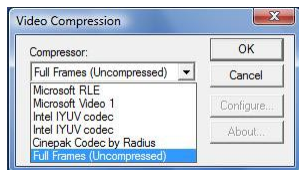
Multiple Views in a Movie



The Advanced Flight Recorder script allows you to record or access a flight path in TNTsim3D and make a movie using the path. The basic operation and capability of this script are described in a Technical Guide entitled *TNTsim3D: Making Movies*. Many views can be opened or defined in TNTsim3D. You can integrate up to 4 movies of these simultaneous views into a single movie. A simple use would be to combine the forward view and the map view of a map into a movie so that the forward view of a realistic scene can be tracked on the vertical view of the map of the same area being overflown. You can also use a three-monitor system to stretch a single movie across all 3 monitors so that you can view the movies of 3 simultaneous views on different screens.

The custom dialog created by the script lets you design how your movie will look like with the combination of several views. Using the Movie Setup panel features, you can select the views to be integrated into a single movie and specify each view's height, width, and position in the movie. On the the Movie Setup panel, the height and width of the overall movie should be specified carefully according to the position and size of the views that will be combined into a single movie. If you accept the default settings provided by the script, a movie is created including two views, the forward view and the map view, with equal height and width of 400 pixels.

Once you created the output movie file in AVI, MPEG, or WMV format, you can also select a video codec to compress the movie file unless you want to record the movie in full frames (uncompressed). You



Select the video codec from the list to generate a movie with smaller storage requirements.

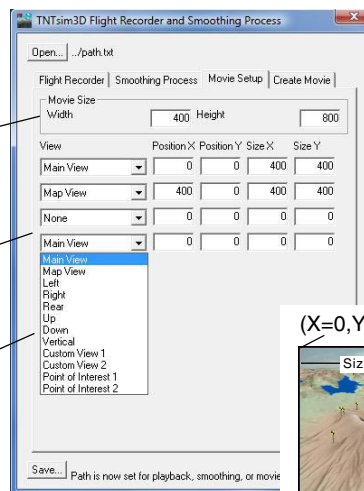
different from the uncompressed one. If you do not select a video codec from the list when prompted, an uncompressed movie is generated by default.

can choose any of the codecs listed to generate a compressed movie when prompted. The list includes all the video codecs installed in your system. Note that the image quality of the compressed movie may be

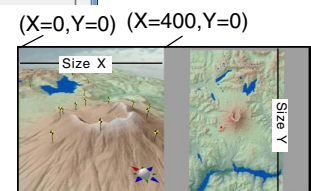
Set the movie size by specifying height and width in pixels.

Specify size and position of each view in the movie.

Select the view to include in a movie.



In the illustration above, a forward view combined using the default settings into a single movie are shown. The illustration to the left shows the default settings to create multiple views in a movie.



The views you specified on the Movie Setup panel to include in the movie must be open in TNTsim3D during the recording.