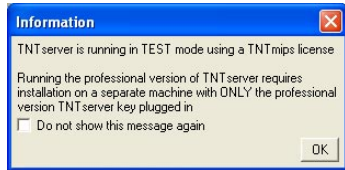


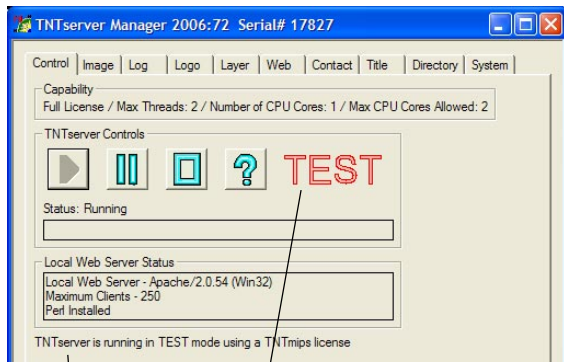
## Using in Test Mode

TNTserver can be run in the full professional mode or test mode on Windows 2000, Windows XP, and Windows Server 2003 platforms. No special authorization code is required for you to run TNTserver in test mode with a **fixed-license** TNTmips, TNTedit, or TNTview software authorization key. TNTserver does not support the use of a floating license for any TNT product.

The purpose of the test mode is to provide every MicroImages client the opportunity to experiment with the latest version of TNTserver. It also permits those who have purchased a professional TNTserver to try the latest patches and design new content without disrupting a working, published site.

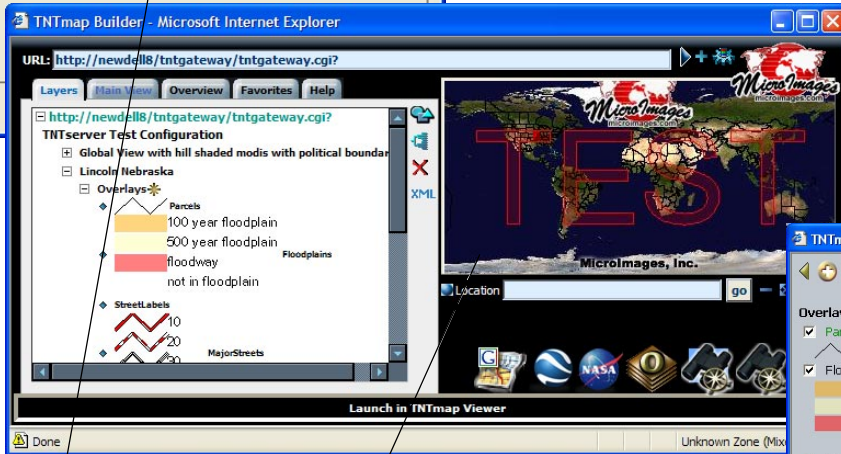


If a TNTmips key is detected by TNTserver Manager during startup, you will get the message window at the left, which informs you that you are running and can only run in test mode. This same information is included on the license acquisition panel during installation.



Although the test mode is FREE, it watermarks every view by inserting the word “TEST” as shown here. Any TNTmips, TNTedit, or TNTview software authorization key that is at the same or a later version than the TNTserver can be used to install and operate TNTserver in this test mode. Both the test version of TNTserver and any of the other TNT analysis products can run on the same computer and share the same USB key. TNTserver can also be operated in test mode with an independent software authorization key programmed for this specific purpose.

When you purchase a professional version of TNTserver, a separate USB key is provided. It **can not be attached** to a computer that has a professional TNTmips, TNTedit, or TNTview key attached to that same computer. Professional TNTservers used to publish geodata via a LAN, WAN, or the Internet should use dedicated computers for this purpose.



The large, red word **TEST** appears on the Control panel in TNTserver Manager as well as text that explains that TNTserver is running in test mode and what type of product license key was found.

The word **TEST** is prominently inserted in every image generated from the layers selected for the main view by a WMS client.

The Locator image for TNTmap Builder and the Overview image for TNTmap Viewer are also generated by TNTserver and include the superimposed word **TEST** and the MicroImages logo.

