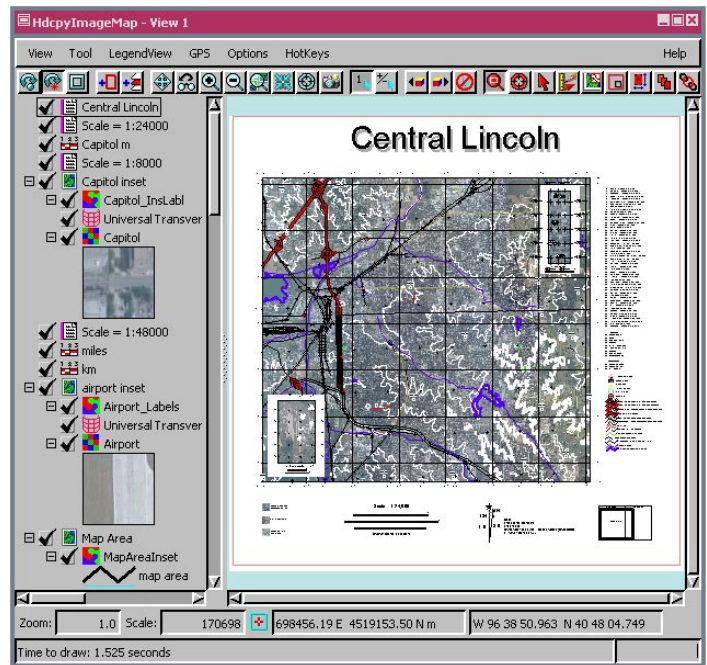
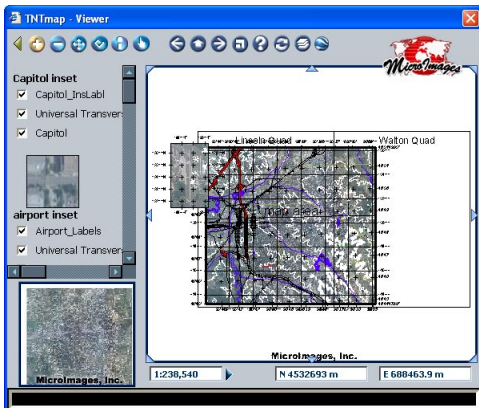


Publishing Layers, Groups, or Layouts

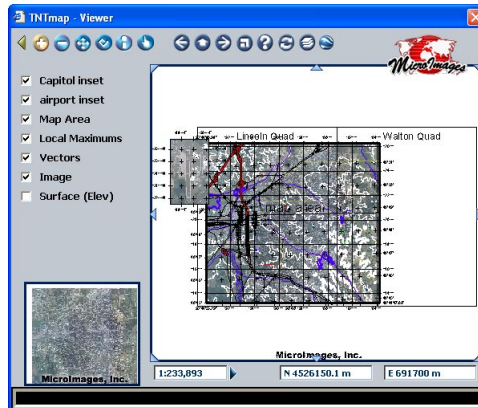
TNTserver Manager gives you the option of making atlas layers available as layers, groups, or layouts. If you do not turn on the *Show layout only* or *Show groups only* options on the Layer tabbed panel of TNTserver Manager (see illustrations below), all layers in the atlas are available for individual selection. If the atlas is available as individual layers and you select all layers in an atlas, layers can be turned on and off individually from the legend in TNTmap Viewer, TNTmap Open, World Wind, and the extended Google Maps launched by TNTmap. (All layers are sent as a single image for better display in Google Earth.) These layers are, however, individual layers, all of which are positioned using georeference information. A layout will only appear as it does in TNTmips (shown at right) if it is composed of a single group or of multiple groups that all have geographic attachment. Most of the sample atlases posted on MicroImages' web site, such as Egypt Oases, Nebraska Land Viewer 2nd Ed., and Lincoln Property Viewer 2nd Ed., are composed of a single group or geographically attached groups. Such atlases will look the same whether they are selected as layers, as groups, or as a layout. When displayed as layers, the end-user has the most control over what they are viewing.



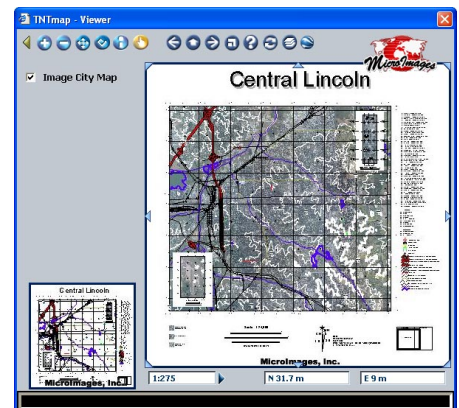
Atlases that have multiple, manually positioned groups, such as the one illustrated here, are not suitable for display together other than as a layout. For such layouts, you should turn on the *Show layout only* option. Geographic overlay of these layers has a variety of consequences: the index map is enlarged to encompass the full map area, the inset at the upper right of the map is reduced and placed in position within the overall image, and the inset at the lower left is enlarged and positioned off the edge of the map in its actual location, among others. The view canvas appears the same whether both options are off or if *Show groups only* is on. The difference between making individual layers available and making only groups available is only in the legend controls for turning layers/groups on and off.



Show layout only
 Show groups only
 Individual layers are advertised by the Web Map Service (WMS).
 When all layers from this atlas are selected and displayed together, the result is as above.



Show layout only
 Show groups only
 Only group names are advertised by the Web Map Service (WMS).
 When all groups from this atlas are selected and displayed together, the result is as above.



Show layout only
 Show groups only
 Only layout names are advertised by the Web Map Service (WMS).
 When this single image is selected, the result is as above.