

Installation

TNTserver runs on Windows 2000, Windows XP, and Windows Server 2003 platforms. The data accessed by TNTserver can reside on any supported platform (Windows, Mac, Linux, or Solaris) and may be on multiple, mixed platforms. A software authorization key is required only on the computer running TNTserver and should be connected to its USB or serial port prior to installation. No TNT product is required on any other computer(s) that hosts only the TNT Project Files or files of other supported data formats.

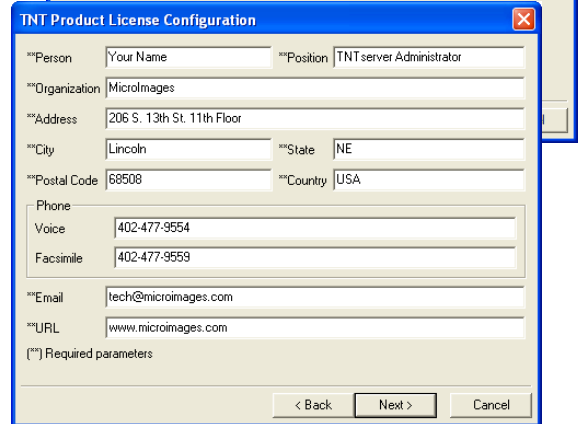
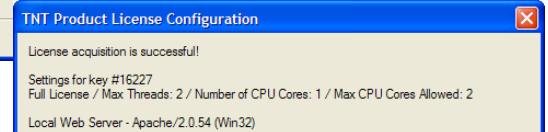
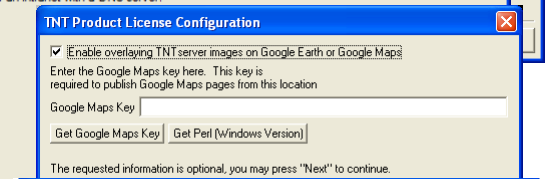
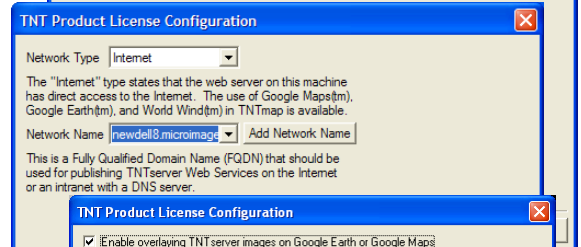
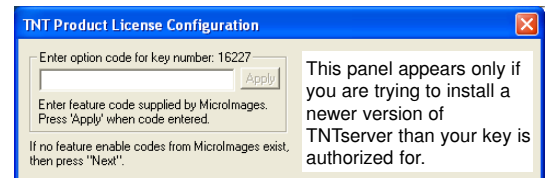
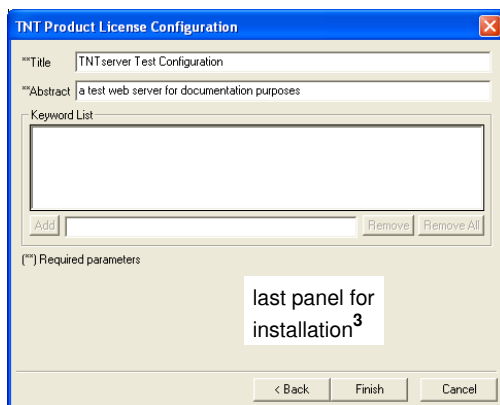
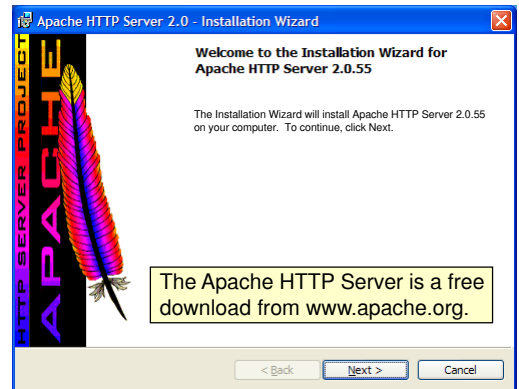


Prior to installing TNTserver, install a web server, such as Apache (recommended) or Windows IIS (Internet Information Services), and test it to insure it is running properly on the machine chosen for your TNTserver installation. The TNTserver installer can then automatically setup features for the web server (for example, the correct location and virtual location for the installed CGI file so that the TNTmap installed can automatically connect to it) while it takes you through all other steps necessary for TNTserver installation. Having Apache or IIS

running is also necessary for the automatic start of TNTserver when installation is complete.

Installation of TNTserver 2006:72 uses InstallShield and TNTserver Manager to guide you through the installation and configuration steps. After installation, a TNT Product License Configuration window opens. This window may open before you have the opportunity to click on the Finish button in InstallShield. You can finish InstallShield before or after going through the configuration steps. The first Configuration panel¹ shown at the right appears only if you are trying to install a newer TNTserver than your key is authorized for. If this panel appears, obtain and enter the feature code, then click on Next. After initial installation, you can enter feature codes on the System panel of TNTserver Manager. The next panel has you specify a Network Type and Network Name. See the color plate entitled *TNTserver 2006:72: Configuration and Network Type* for additional information on setting the network type. If the Network Type was set to Internet or Internet by Proxy, the next configuration panel lets you acquire the components necessary to launch Google Earth or Google Maps from TNTmap Builder. You will not see this panel if your Network Type was set to Intranet². The

next panel informs you about the success of the license acquisition, the key number, and the local web server detected (IIS or Apache) and its version. If a web server is not detected, a button appears on this panel that links to Apache download. If a license was not successfully acquired (because the key is not attached or is damaged), you will get



the error message generated when trying to acquire the license and be instructed to resolve the key problem. After a license is detected, the next panel³ requires you to enter information that identifies the system administrator and is required by the Open Geospatial Consortium (OGC) for compliance with their Web Map Service GetCapabilities operation. Required fields are marked with **. The only fields not required are the position of the contact person and phone contact information. All required fields must be filled out before the Next button becomes active. The next panel³ also has you enter required information. The title is the name OGC uses to identify your TNTserver. This name appears at the top of the Layers list in TNTmap Builder. Individual atlas names are set separately when the atlas is added using TNTserver Manager. The abstract is your description of your TNTserver. Each is limited to 512 characters. All of the information on both of these panels can be changed later using the TNTserver Manager's Contact and Title panels. Once these are entered, click on Finish and TNTserver Manager will launch and start TNTserver after connecting to Apache or IIS. TNTserver Manager then flips to the Web tabbed panel so you can see the status of TNTserver. If TNTserver is running, then TNTmap, which is included in this installation, should also start at this point. If there is some configuration problem, TNTmap will not start. See the eight pages on TNTserver Manager for information on its operation.

¹ If you have not previously installed TNTserver or another TNT professional product on the machine you are currently installing TNTserver on and you do not have the driver for your key, the first configuration panel (see below) will ask what kind of key you have so the correct driver can be installed as part of the configuration process.

² This panel does not appear during an update install if you have already installed Perl and acquired and entered a Google Maps Key.

³ If you are updating your installation of TNTserver, this panel will not appear. If you need to make changes to information entered during your first TNTserver installation, you can do so on the Contact and/or Title panel of TNTserver Manager.



If you have not previously installed TNTserver or a TNT professional analysis product on the machine you are installing TNTserver on now, the first configuration panel will ask you to identify the type of key you have so the appropriate driver can be installed during configuration. If you have already installed a TNT product, the driver will already be installed and you begin configuration at the panel that lets you enter an option code or the panel that has you specify the Network Type and Name as described on the front of this sheet. Your TNTserver license key must be attached during installation so the license can be acquired for configuration purposes and so TNTserver can be launched. If a TNTmips license key is attached to the computer, TNTserver will run in test mode.

You install Apache or IIS.



TNTserver Installer and Setup Utility installs the following folders and components and configures the relationships shown (lines).

