

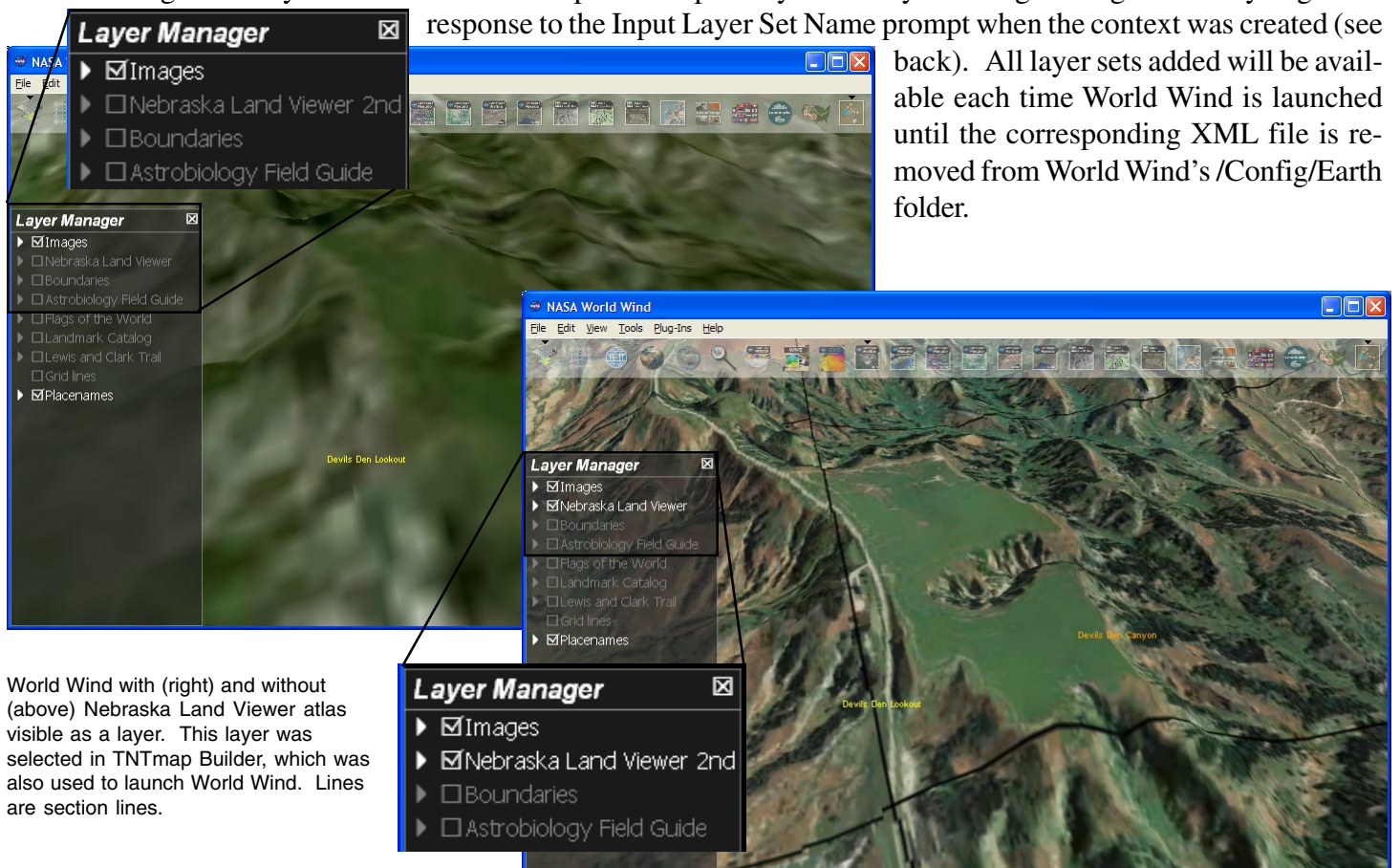
# Use World Wind to View WMS Layers

Layers selected from a TNTserver site or from any other Web Map Service (WMS) compliant server (ISO 19128) can be displayed in TNTmap Viewer, TNTmap Open, Google Maps, Google Earth, or World Wind using TNTmap Builder. This display of selected layers can be immediate (the designated application is launched with the selected layers in place) and/or the web map content can be saved for subsequent use in any of these applications (see the back of this page for information on saving web map content for World Wind). Only the installed version of TNTmap Builder can directly launch World Wind with the selected layers added. When a World Wind context file is saved from the web application version of TNTmap Builder, it is saved to your default browser location. You then need to move it to the NASA/World Wind/Config/Earth folder for the layer set to be available the next time you launch World Wind. If World Wind is already open, new layers are not added until your next World Wind session. The World Wind application is not available for the Macintosh at this time.

When you use TNTmap Builder to launch World Wind, the layers currently selected for the Main View are added to display over the World Wind Images layer set using the name you assigned when saving, and you zoom to the approximate extents of your selected layers. Note that Layer Manager display is optional in World Wind and that World Wind lists its layers in bottom to top order, which is the opposite of the order used in TNTmap Builder. You can right-click on any layer and choose to zoom to its extents.

To use this feature, you must download and install World Wind, which is available at <http://worldwind.arc.nasa.gov>. If your Main View list in TNTmap Builder contained individual layers, you will have separate layers in World Wind that can be turned off individually. You can have multiple sets of layers from TNTmap Builder included for World Wind viewing. Each layer set is listed and manipulated separately in the Layer Manager using the name you gave in response to the Input Layer Set Name prompt when the context was created (see

back). All layer sets added will be available each time World Wind is launched until the corresponding XML file is removed from World Wind's /Config/Earth folder.



World Wind with (right) and without (above) Nebraska Land Viewer atlas visible as a layer. This layer was selected in TNTmap Builder, which was also used to launch World Wind. Lines are section lines.

## Save Layers for Automated Restart in World Wind (\*.xml Context)



The five Save As/Settings panels in TNTmap Builder let you save a context file for later, independent viewing of the currently selected layers on the Main View panel. This Web Map Service (WMS) content can be made up of layers from one or more WMSs. You can choose to save a context file for Google Maps (\*.htm), Google Earth (\*.kml), World Wind (\*.xml), TNTmap Open (\*.htm), or TNTmap Viewer (\*.htm or \*.cml). Double-clicking on a saved context file will launch the application that was selected when the context file was saved with the designated WMS layers in the correct location. The five Save As/Settings panels each provide the relevant options for one of the target web map viewing applications listed above. The color plate entitled *TNTmap 2006:72: Saving and Using Contexts* provides general information on the various contexts and how they are used in TNTmap. This same panel can be opened from the Change Settings icon at the top of TNTmap Builder.

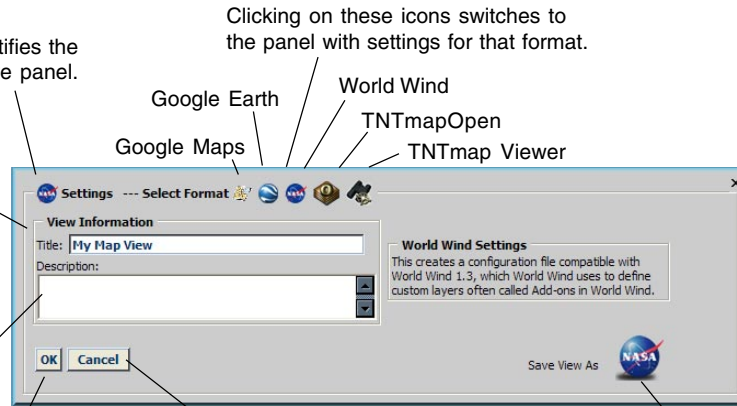
Name to use for layers listed in your Main View when its content is saved as a context file for automated reuse later.

**Installed Version:** you have the opportunity to alter this name when the file path is chosen if you forgot to alter it here or if change your mind about the name you want.

**Web Application Version:** this name will be assigned if you permit this context file to be saved. It will automatically be saved to the generic place your browser uses for any files you trust and permit to be saved.

Identifies the active panel.

Clicking on these icons switches to the panel with settings for that format.



Enter the desired description for inclusion in the web map context file (\*.xml).

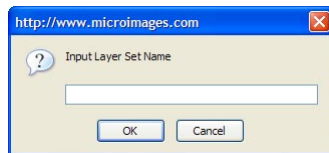
Closes Save As/Settings panel without changing any settings.

Saves references to the layers currently on the Layers list to a World Wind context (\*.xml). See Title description for installed and web application version behaviors. You are led through a series of prompts (below) after you click on this button, which vary depending on whether you are running the installed or web application version of TNTmap Builder.

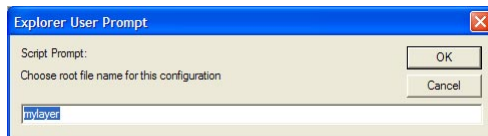
Saves current settings as default parameters for World Wind sessions. A context file *will not be saved*.

**Installed Version:** the tilt, heading, and other parameters are saved for automatic use for future World Wind sessions launched from TNTmap.

**Web Application Version:** these settings only apply to the current session of TNTmap. They are not saved for use the next time you launch World Wind from a new TNTmap session.



The name you enter here is the name that appears in World Wind's Layer Manager. Used for both the web application and installed versions of TNTmap Builder.



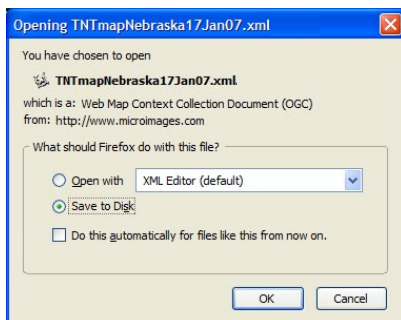
### Installed version only.

The name you enter here is the name used for the saved context file in your NASA/World Wind/Config/Earth folder.



### Web application version only.

Instructions to move the context file you download. Move to your NASA/World Wind/Config/Earth folder.



**Web application version only.** Choose Save to Disk in this window, then click OK. You will then find a file named TNTmapYourName.xml on your desktop or wherever your browser is configured to save. Move that file to the / Config/Earth folder where World Wind is installed. This layer set will appear the next time you run World Wind.