

Use TNTmap Open to View WMS Layers

Layers selected from a TNTserver site or from any other Web Map Service (WMS) compliant server (ISO 19128) can be displayed in TNTmap Viewer, TNTmap Open, Google Maps, Google Earth, or World Wind using TNTmap Builder. This display can be immediate (the designated application is launched with the selected layers in place) and/or the web map content can be saved for subsequent use (see the back of this page). When you launch into TNTmap Open using the icon in TNTmap Builder, you are using the OpenLayers API together with extensions provided by the TNTmap web application or executable version. OpenLayers is an Open Source JavaScript toolkit initially developed by Metacarta then placed in the public domain for free use under the BSD License (<http://openlayers.org>).

There are four modes for mouse left-click actions: zoom, pan, measure, and get information. Information about individual features can be displayed from the layers as a response from a WMS server to a GetFeatureInfo request by single-clicking over the view canvas (for TNT objects the DataTips set up in your TNT product are automatically used) in this last mode. Double-clicking on the view canvas zooms in 2X in both zoom and pan modes.

Zoom Mode. Click on this icon then use the mouse to pull out a box enclosing the area you want to zoom to fill the view canvas.

Pan Mode. Click on this icon then use the mouse to click, hold, and reposition the image by dragging.

Measure Mode. Provides the distance between the locations of your last two mouse clicks.

Get Information Mode. Sends a request for feature information at the location you click on.

Clicking on the central gadget returns you to the full extents of the layers selected for viewing.

Clicking on one of the arrowheads jumps the view 10% in that direction.

Use this slider to zoom in and out.

Opens TNTmap Builder.

Clicking on the MicroImages logo opens MicroImages' home page in your browser.

Use this symbol to expose/hide the legend.

TNTmap Open can display legend graphics when provided by the WMS.

Use this symbol to expose/hide the overview.

The bottom layer on the Layers panel (TNTmap Builder) is automatically used as the base layer.


Geographic coordinate readout for cursor position is constantly updated.

691519.64, 4520607.47

692947.67, 4520473.38

Save Layers for Automated Restart in TNTmap Open (*.htm Context)



The five Save As/Settings panels in TNTmap Builder let you save a context file for later, independent viewing of the currently selected layers on the Layers panel. This Web Map Service (WMS) content can be made up of layers from one or more WMSs. You can choose to save a context file for Google Maps (*.htm), Google Earth (*.kml), World Wind (*.xml), TNTmap Open (*.htm), or TNTmap Viewer (*.htm or *.cml). Double-clicking on a saved context file will launch the application that was selected when the context file was saved with the designated WMS layers in the correct location. The five Save As/Settings panels each provide the relevant options for one of the target web map applications listed above. The color plate entitled *TNTmap 2006:72: Saving and Using Contexts* provides general information on these various viewing contexts and how they are used in TNTmap. This same panel can be opened from the Change Settings icon at the top of TNTmap Builder. 

Name to use for layers listed in your Main View when saved as a context file for automated reuse later.

Installed Version: you have the opportunity to alter this name when the file path is chosen if you forgot to alter it here or if you change your mind about the name you want.

Web Application Version: this name will be assigned if **you permit** this context file to be saved. It will automatically be saved to the generic place your browser uses for any files **you trust and permit** to be saved.

Enter the desired description for inclusion in the web map context file (*.htm).

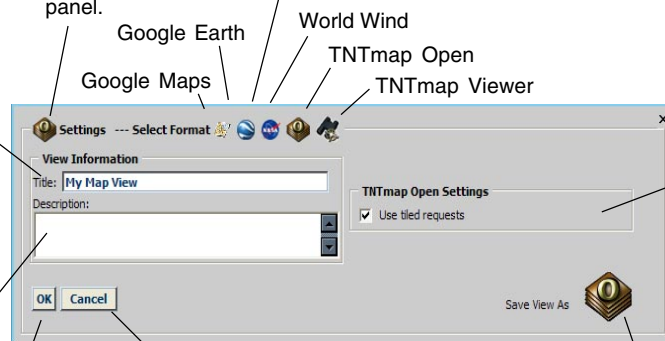
Saves current settings as your default parameters. A context file *will not be saved*.

Installed Version: the setting of the Use Tiled Requests toggle is saved for automatic use for future TNTmap Open sessions.

Web Application Version: these settings only apply to the current session of TNTmap. They are not saved for use the next time you launch TNTmap Open from a new TNTmap session.

Identifies the active Settings panel.

Clicking on these viewer icons switches to the panel with settings for that format.



Determines whether or not TNTmap Open requests tiled images from the selected WMS(s).

Closes Save As/Settings panel without changing any settings.

Saves references to the layers currently on the Layers list in TNTmap Builder as a web map context file (*.htm) for TNTmap Open. See Title description for installed and web application version behaviors.

