

Features Located on Tabbed Panels

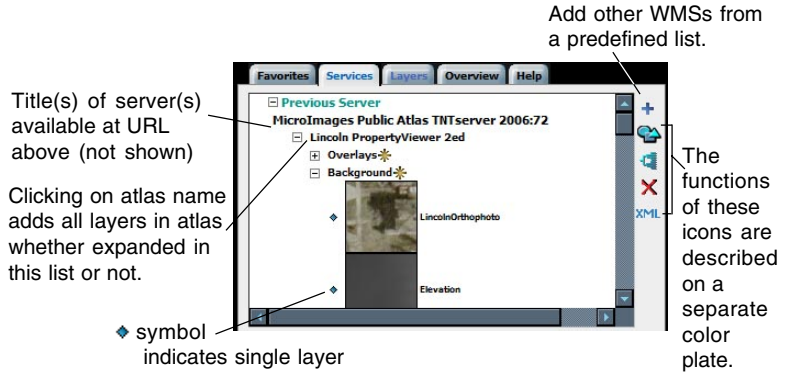


tabbed panels

The standard form of TNTmap Builder provides its features as tabbed panels to maintain a convenient size. Some of these panels are linked together to make the results of an action perfectly clear. For example, when you click on layers in the Services panel, you jump to the panel they were added to (Layers or Overview). Although layers available from MicroImages' web site are illustrated, once you have acquired TNTmap Builder, it can be used independently of any contact with MicroImages' web site or any other MicroImages professional product.

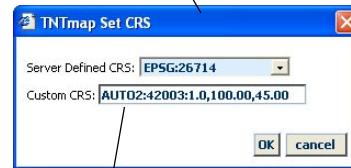
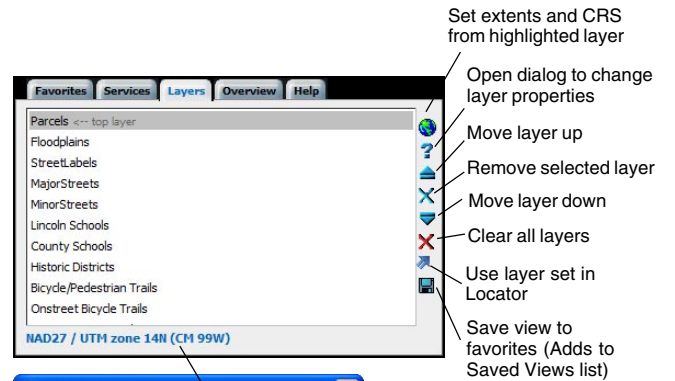
Services Panel

Use this panel to select layers to appear for the main view or the overview. Layers selected from the Services panel are added to either the Layers or Overview panel depending on which view panel was visited last. Clicking on layers when TNTmap initially opens adds them to the Layers panel. You can combine layers on this panel from a number of WMSs by changing the URL at the top of the window or using the Add button on this panel.



Layers Panel

This panel provides the list of layers you are building up for viewing in the viewer of your choice (see the color plate entitled *TNTmap 2006:72: Choose WMS Layers for Use in Popular Viewers*) and the active Coordinate Reference System (CRS). The layers may have come from multiple WMS sites and need not include any layers from the WMS at microimages.com. In addition to the list, there are a number of icons that let you manipulate the contents of the list. One of these icons lets you change the properties of the highlighted, selected layer including its title, format, and opacity among other properties. You can also set the Locator view to use the selected layers.



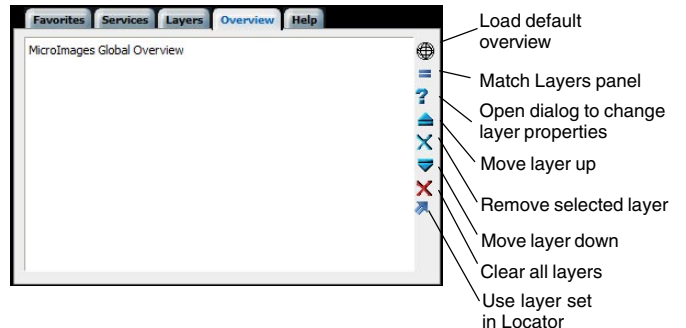
Clicking on the active CRS opens the TNTmap Set CRS window.

Enter the parameters for a CRS not on the list above. The field that was touched last is the CRS used.

Clicking on the specified CRS (the active CRS) at the bottom of this panel opens a window so you can pick from other CRSs advertised by the selected server. Some servers do not advertise all CRSs supported so a Custom CRS field is provided for you to enter the parameters for CRSs not on the list. The last field changed before you click on OK determines which CRS is used.

Overview Panel

This panel lists and manages the layer(s) selected for the overview image that will be shown for general area reference in the lower left corner of TNTmap Viewer. TNTmaps' default Overview is the same image and vector outline used for the Locator View. This default overview can be added to, removed (no overview), or replaced. The contents of this panel apply only to viewing in TNTmap Viewer. (over)



Favorites Panel

The installed version of TNTmap provides two lists of favorite layers/combinations of layers for viewing. The list available under the Saved Views heading in the installed versions of TNTmap Builder initially contains context files that open views of the USGS-generated orthophotos on Microsoft's TerraServer site. You switch between the two lists by clicking on the Web URLs or Saved Views heading at the top of the panel. You cannot accumulate personal favorites and there are no headings on this panel if you are running TNTmap Builder as a web application because this version leaves nothing behind when you exit. The single list on the panel is the same as that provided under Web URLs for the installed version. You can save contexts for later viewing using the *Save as TNTmap/Google Earth/Google Maps* button, which also lets you save to World Wind (Windows only) and TNTmap Open context files. (For additional information on contexts see the color plate entitled *TNTmap 2006:72: Saving and Using Contexts*.) If a context is saved to the contexts folder with a TNTmap installed on a Windows platform, it will appear on the Saved Views list. This folder is the location saved to when you use the *Save to Favorites* button on the Layers panel in the installed version. Only OGC context files (*.cml with the viewer not specified) should be saved to or placed in this directory. Contexts on the Saved Views list can be launched by clicking on any of the viewer icons. When saving in the Mac OS X widget, saving is either to the Maps folder in your home directory or to the widget itself depending on your saving choices (see the color plate entitled *TNTmap 2006:72: Widget Viewing of WMS Content for Mac OS X*). When running as a web application, using either save method gives you the option to open the context or save it to disk.

The context files listed on the Favorites panel under Web URLs have a designated viewer. When you highlight a context on the Web URLs list, the generic Launch Context icon (shown above) changes to an icon that indicates the viewer it will launch in. The TNTmap Viewer icon appears for both TNTmap Viewer and the TNTmap implementation of Google Maps API, so Google Maps or TNTmap Viewer is included in context name. Only OGC Contexts (*.cml) should appear on your Saved Views list (saved from the Save to Favorites icon on the Main View panel or created elsewhere). Because no viewer is specified in this type of context file, you can choose to launch files on this list in any of the supported viewers (TNTmap Google Maps Viewer, Google Earth, World Wind, TNTmap Open, or TNTmap Viewer) by clicking on the desired icon at the bottom right of the TNTmap Builder window. Consequently, there is no launch icon on the Favorites panel when the Saved Views list is used. When you highlight a context on the Saved Views list, the request for layers is made to the specified WMS server(s) and the layers are added to the Main View panel. You can launch into the viewer of your choice without returning to the Main View panel.

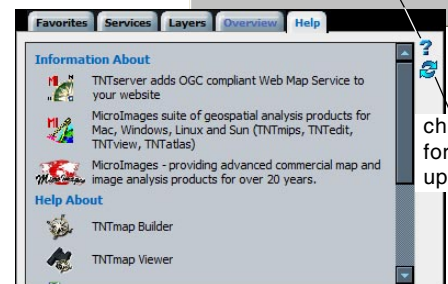
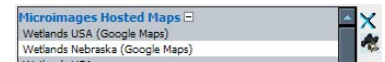
Help Panel

Both the installed and web-application versions have a Help tab with links to a variety of web pages, color plates, and multi-page Help documents. The top information link takes you to a page with general information about TNTserver and links to download third-party products needed for complete functioning of TNTserver and TNTmap (Apache, Perl, and a Google Maps API Key) as well as a TNTserver download link and links to additional TNTserver documentation. The second link opens a web page that describes each of the products in the TNT professional suite. The MicroImages' globe logo link takes you to a web page with a general description of MicroImages and its products and services. The TNTmap Builder link opens a 9-page PDF help document that describes the features of TNTmap Builder in detail. The TNTmap Viewer link opens a 5-page PDF help document that describes the features of TNTmap Viewer in detail. The links for the TNTmap Google Maps Viewer, Google Earth, and World Wind (Windows only) open the corresponding color plates. Each of these color plates explains the basics of using TNTmap Builder to select WMS layers for use in these viewers. The back of each of these three color plates describes how to use TNTmap Builder to save selected layers as context files for future use in the viewers. There are also links to contact MicroImages' client support or marketing and business departments.



deletes the highlighted context from the list

Additional icon on Web URLs list to launch highlighted context.



check for updates