

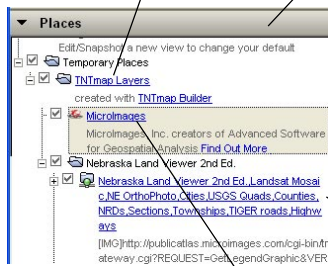
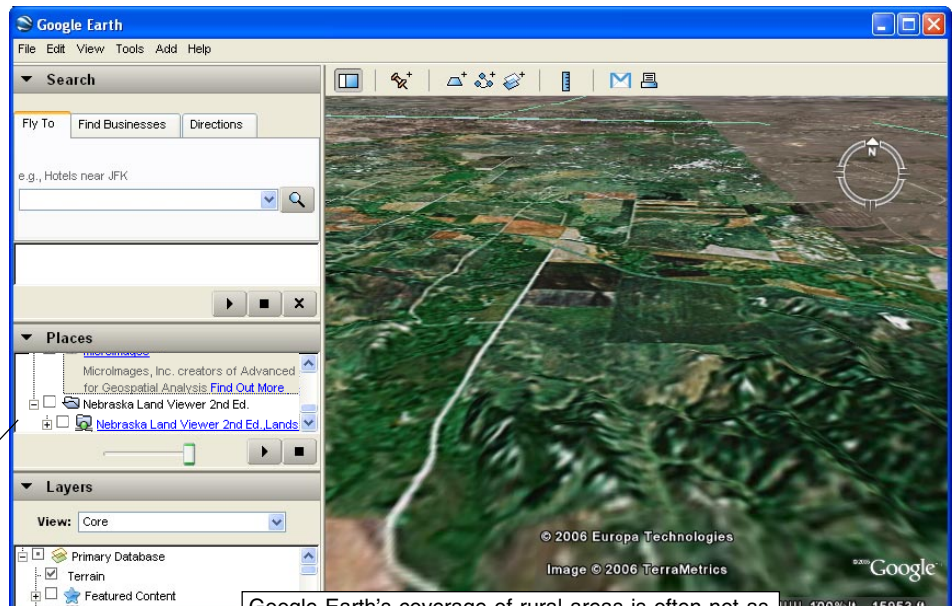
# Use Google Earth to View WMS Layers

Layers selected from a TNTserver site or from any other Web Map Service (WMS) compliant server (ISO 19128) can be displayed in TNTmap Viewer, TNTmap Open, Google Maps, Google Earth, or World Wind using TNTmap Builder. The display of selected layers can be immediate (the designated application is launched with the selected layers in place) and/or the web map context can be saved for subsequent use in any of these applications (see the back of this page for information on saving a web map context for Google Earth).



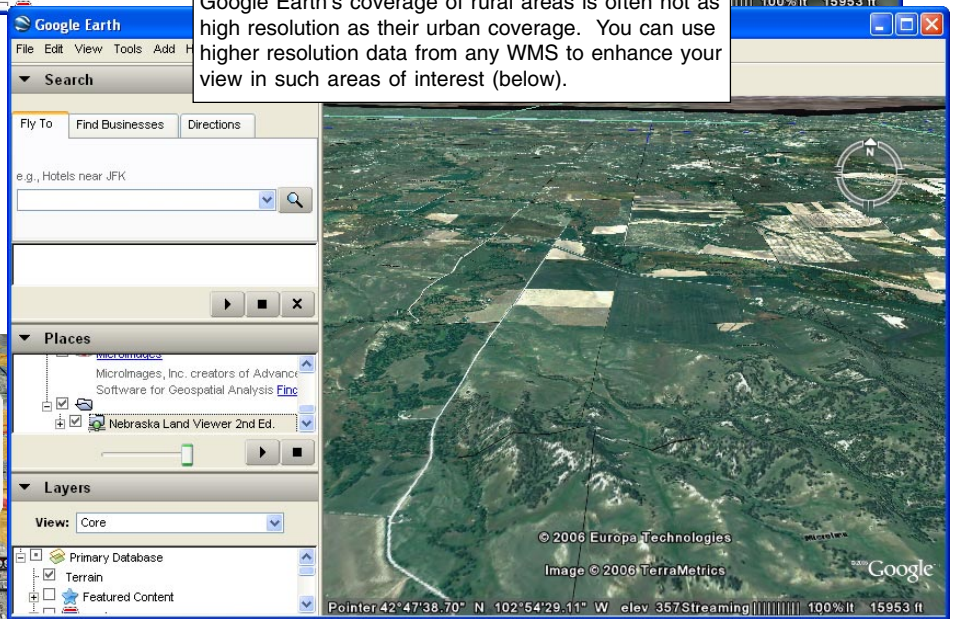
When you use the icon in TNTmap Builder to launch Google Earth, the layers currently selected for the Main View are added to the Temporary Places list in Google Earth under the heading TNTmap Layers, and you zoom to the approximate extents of your selected layers. The tilt and heading of your initial view will be the default, which is in the plane of the screen with north up, unless you have specified otherwise in your Google Earth settings (see the back of this page). All layers are merged into a single image for better display quality in Google Earth. Google Earth 4 is recommended for best viewing of vector layers. You can have multiple sets of layers from

TNTmap Builder listed under Temporary Places. Each set will have a TNTmap Layers title, which is followed by an entry for MicroImages, and then the list of the one or more layers that were on the Main View list. Double-clicking on the title zooms you to the approximate extents of all the layers; clicking on any layer zooms Google Earth to the approximate extents of that layer.



Individual layers that make up composite image are listed.

Google Earth's coverage of rural areas is often not as high resolution as their urban coverage. You can use higher resolution data from any WMS to enhance your view in such areas of interest (below).




Pans and zooms to MicroImages' Lincoln, NE location and provides a balloon with links to the web site and directions.



# Save Layers for Automated Restart in Google Earth (\*.kml Context)



The five Save As/Settings panels in TNTmap Builder let you save a context file for later, independent viewing of the currently selected layers in the Layers panel. This Web Map Service (WMS) content can be made up of layers from one or more WMSs. You can choose to save a context file for Google Maps (\*.htm), Google Earth (\*.kml), World Wind (\*.xml), TNTmap Open (\*.htm), or TNTmap Viewer (\*.htm or \*.cml). Double-clicking on a saved context file will launch the application that was selected when the context file was saved with the designated WMS layers in the correct location. The five Save As/Settings panels each provide the relevant options for one of the target web map viewing applications listed above. The color plate entitled *TNTmap 2006:72: Saving and Using Contexts* provides general information on these various viewing contexts and how they are used in TNTmap. This same panel can be opened from the Change Settings icon at the top of TNTmap Builder. 

Name to use for layers listed in your Main View when its content is saved as a context file for automated reuse later.

**Installed Version:** you have the opportunity to alter this name when the file path is chosen if you forgot to alter it here or if you change your mind about the name you want.

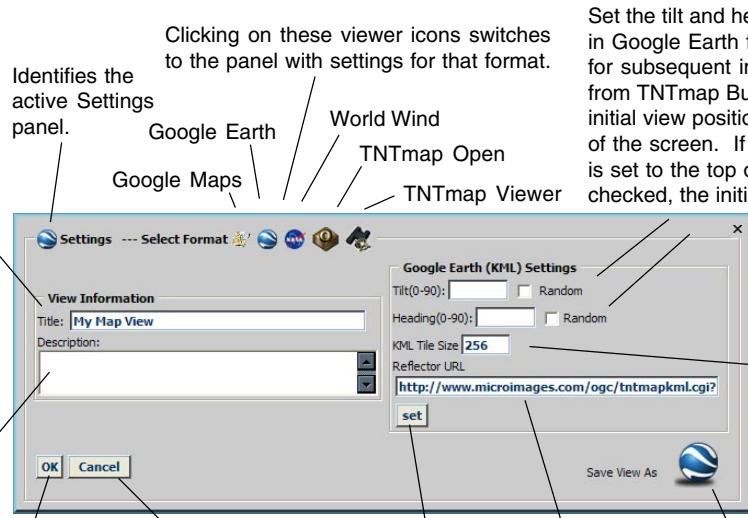
**Web Application Version:** this name will be assigned if you permit this context file to be saved. It will automatically be saved to the generic place your browser uses for any files you trust and permit to be saved.

Enter the desired description for inclusion in the web map context file (\*.kml).

Saves current settings as default parameters for Google Earth sessions. A context file *will not be saved*.

**Installed Version:** the tilt, heading, and other parameters are saved for automatic use for future Google Earth sessions launched from TNTmap.

**Web Application Version:** these settings only apply to the current session of TNTmap. They are not saved for use the next time you launch Google Earth from a new TNTmap session.



Identifies the active Settings panel.

Clicking on these viewer icons switches to the panel with settings for that format.

Set the tilt and heading angles for the initial display in Google Earth from a saved context and to use for subsequent instances of Google Earth opened from TNTmap Builder. If nothing is set for tilt, the initial view positions the layers parallel to the plane of the screen. If nothing is set for heading, North is set to the top of the screen. If Random is checked, the initial tilt and/or heading will be some random angle between 0 and 90 and the tilts of subsequent contexts will vary randomly.

Maximum image width before tiling. If the current image exceeds this width, this width is the maximum width of each tile that will be sequentially created for overlay in Google Earth.

Closes Save As/Settings window without changing any settings.

Sets the KML reflector URL to the currently entered URL.

Saves references to the layers currently on the Layers list in TNTmap Builder to a Google Earth context (\*.kml). See Title description for installed and web application version behaviors.

URL for KML reflector<sup>1</sup> CGI. You can use the one written by MicroImages located on its web site or installed with TNTmap (tntmapkml.pl) or any other KML reflector you know the URL for.

<sup>1</sup> A KML reflector script gets the coordinates requested by Google Earth and uses them to generate a WMS request that is sent to the associated WMS. The resulting image is used to create a KML file that is used by Google Earth to update its view.

