

## TNTmap Builder 2006:72

# Three Forms to Fit User's Preference and Device

You can use the FREE TNTmap Builder to browse and select Web Map Service (WMS) content to be viewed in the viewer of your choice (Google Maps, Google Earth, World Wind, TNTmap Open, or TNTmap Viewer). TNTmap Builder can be used for FREE and independently of any contact with MicroImages' web site or any other MicroImages professional product. TNTmap Builder has three forms for Windows and Mac OS X and can be used as a web application or installed as an executable program. All three forms provide the same functionality. These three different forms are provided to support different devices and user preferences. When you run the installed version of TNTmap, the last selected WMS is saved locally from one session to another. Thus, after you have chosen your favorite WMS, anytime you start TNTmap Builder you can just click on the desired set of layers and then click on the desired viewer icon, which means you can be viewing a complex set of layers in Google Earth or another viewer after just two clicks.



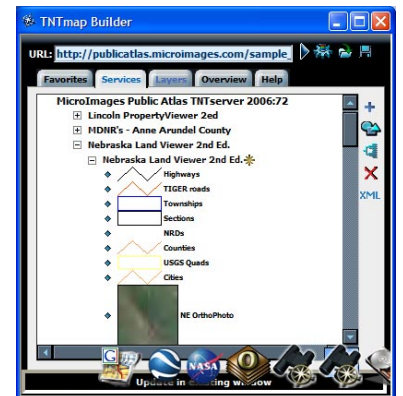
The components of the standard form have been described in detail on the color plates entitled *TNTmap Builder 2006:72: Choose WMS Layers for Use in Popular Viewers and Features Located on Tabbed Panels*.

### Standard Form

The standard form (above) organizes its different components on tabbed panels making its size convenient for general use and fits within the new Microsoft UMPC (Ultra Mobile PC) device dimensions (800 x 480 pixels). You can convert to the mini form by dragging in the right edge of the window.

### Mini Form

The mini form of TNTmap Builder is designed for small portable devices, such as larger PDA or cell phone screens. You switch from the standard to the mini form by resizing the window horizontally—when the Locator side of TNTmap Builder becomes too small to accommodate the various icons for launching and saving views, these icons jump to the left side of the window and the Locator portion of the Builder disappears. You can get the Locator back again by resizing the window to be wider.



### Quadrant Form

The quadrant form of TNTmap Builder is a power users' desktop version. It provides visual access to site selection, Coordinate Reference System specification, the Locator, the list of available layers from the currently selected WMS, and a view defining panel (Main View, Overview, or Favorites) at the same time so you can make new selections for all without having to flip between panels. The quadrant version is particularly useful for those who want to access layers from a number of different WMSs and build views to save as OGC context documents for use by others. See the detailed nine-page *TNTmap Builder Help* and the *TNTmap: Browsing and Selecting WMS Layers* plate for more information on operation of TNTmap Builder.

