

# Four Ways to Run

You can run TNTmap Builder on a Windows or Macintosh computer as a web application from MicroImages' web site ([microimages.com/tntmap](http://microimages.com/tntmap)) or from any other web site that has it posted for use. You can also download an installable version from MicroImages' web site (or any other that has it posted) and run it as an executable program. Note from the illustrations that the difference in appearance of these four versions of TNTmap Builder is fairly subtle, and most features are shared by all versions. The color plate entitled *TNTmap Builder 2006:72: Three Forms to Fit User's Preference and Device* applies to all but the installed Macintosh Dashboard widget. Use of the Macintosh widget is described on the color plate entitled *TNTmap 2006:72: Widget Viewing of WMS Content for Macintosh*.

## Contexts

The major functional difference between the installed and web application versions is that the installed TNTmap Builder (Mac and Windows) lets you save contexts locally so they can be accessed from the Favorites tabbed panel. A context is a means of saving a view for use at a later time and is described in more detail on the color plate entitled *TNTmap 2006:72: Saving and Using Contexts*.

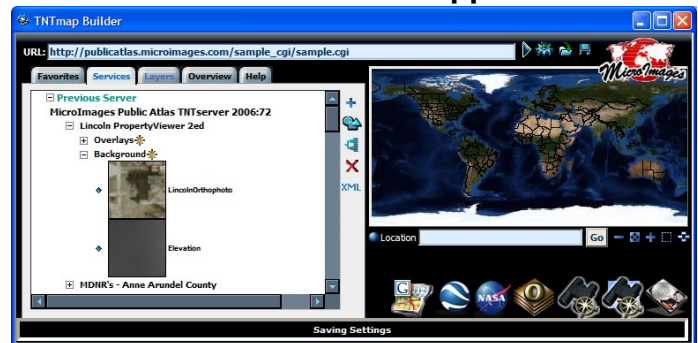
## Installed

Note that there are fewer icons at the lower right of the Mac widget. Widgets do not support communication with another instance of an application, so loading layers currently on the Main View panel into an already open TNTmap Viewer window is not possible. Also note that NASA's World Wind application is not available for the Mac. You can save contexts built with installed TNTmap Builder and later access them from your Favorites panel. Again, contexts are described in more detail elsewhere.

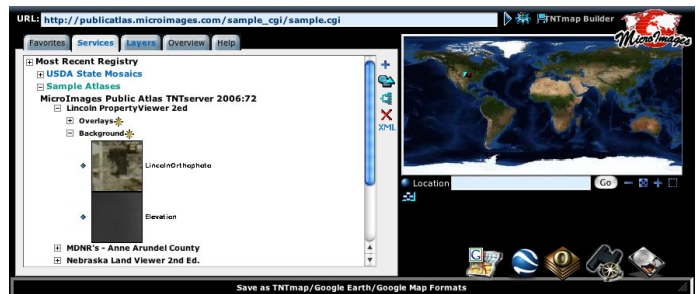
## Web Application

The web application version has been designed to be benign and operate within the confines of your browser without leaving anything behind that you did not intentionally save; for example, it does not save the cookie that would be required for your personal Favorites list to be available the next time you run TNTmap Builder. You can, however, save contexts to the location your browser is configured to save if you consent when prompted. These contexts can be used later by double-clicking on them or opening them in the desired viewer.

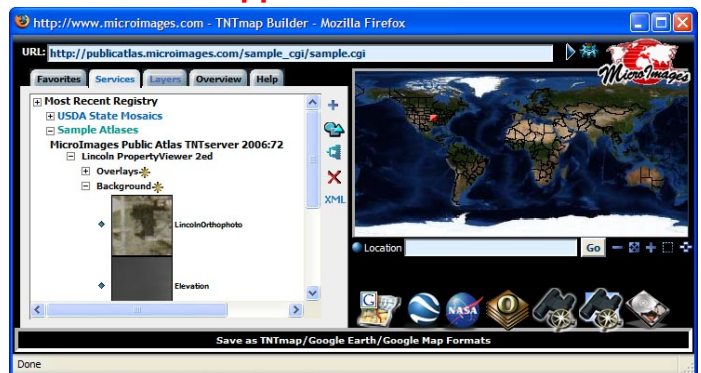
## Installed: Windows Application



## Installed: Macintosh Widget



## Web Application: Windows



## Web Application: Macintosh

