

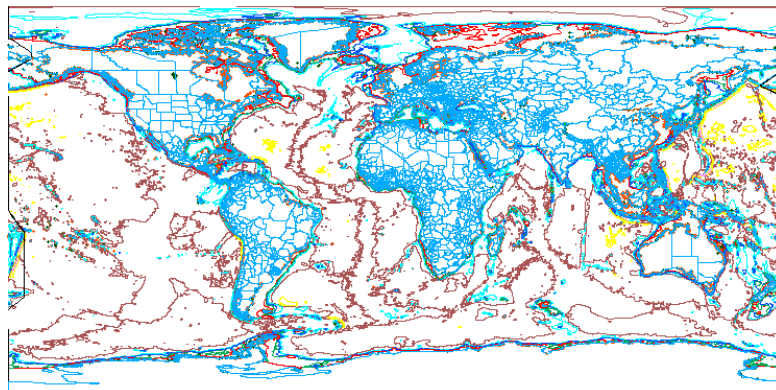
Global Geodata (2006:72)

MicroImages has prepared four Global Data Sets centered on the Greenwich meridian in MicroImages' TNT Project File format to distribute on a single DVD: two World 500 m color images, World 1:1,000,000 Map Features, World Vector Shoreline Plus (1:250,000), and World 1 km Elevation. Each is georeferenced to Latitude / Longitude with the WGS1984 datum. Most layers are assembled into a layout that can be used with any TNT professional product and with TNTAtlas. Full credits and more detailed information for each Global Data Set are provided on the DVD.

TNT Global Geodata (2006:72) requires 2006:72 of the TNT products.

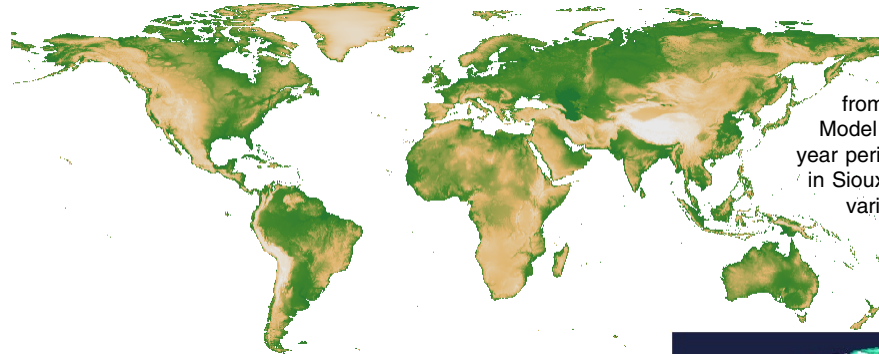
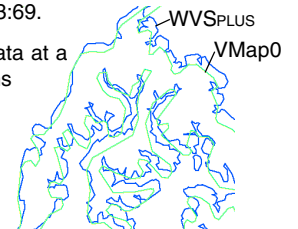


The World 500 m Color Images were prepared from the Blue Marble Next Generation—A true color earth dataset including seasonal dynamics from MODIS with (right) and without (bottom right) bathymetry available from Visible Earth (<http://visibleearth.nasa.gov>). MicroImages is distributing the image without bathymetry in the TNT products' Project File format as a composite 24-bit raster object with embedded, **lossless** JPEG2000 compression. The image with bathymetry has embedded, **99:1** JPEG2000 compression.



The 1:1,000,000 World Map Features vector objects were created from VMap0 data prepared by the National Geospatial-Intelligence Agency (NGA, formerly NIMA) in 2000. VMap0 is an updated and improved version of NGA's Digital Chart of the World (DCW®), which is organized into four libraries in VPF format to represent quadrants of the earth. These libraries provide approximately 130,000 files representing various map themes: Boundaries, Elevation, Hydrography, Industry, Physiography, Population, Transportation, Utilities, Vegetation, and Data Quality. TNTmips was used to merge all these files into 10 TNT Project Files, which each correspond to a theme and contain several global vector objects. Seven of the eight global vector objects created for the Boundaries theme are shown at the left. There are many improvements in this data over the VMap0 prepared in 1997 that was provided with TNT products 2003:69.

The World Vector Shoreline Plus (WVSPPLUS) vector object was also created by NGA in VPF format. WVSPPLUS provides data at a number of different resolutions, only the highest of which is provided with this data set. The Countries/Coastlines/Oceans files at 1:250,000 were converted to Project File format and filtered to remove Lat/Lon grid lines. The difference in complexity between WVSPPLUS (blue) and VMap0 (green) is illustrated at the right. Increased complexity, however, does not necessarily insure a better fit with underlying imagery.



The World 1 km Elevation raster object was prepared from GTOPO30 data. GTOPO30 is a global Digital Elevation Model (DEM) resulting from a collaborative effort over a three year period led by the US Geological Survey's EROS Data Center in Sioux Falls, South Dakota. GTOPO30 was derived from a variety of raster and vector sources. The data was imported as 33 pieces, mosaicked, and had a color map applied in TNTmips. The World 1 km Elevation is distributed in the TNT products' Project File format with embedded lossless JPEG2000 compression.



Political boundaries in a Map Features object overlaid in TNTmips on the World Color Image (right) with an enlargement of the Falkland Islands, or Islas Malvinas, (above) to show how well they overlay. A DataTip for an island off the coast of West Falkland, or Isla Rasa Grande, is shown.

